



T8

13T8/MAS/48-835/IF20/P/DIM 10/1

Our TLEDs are available in InstantFit (Type A / Type C) or MainsFit (Ballast bypass / Type B) versions. The InstantFit lamps work on a broad variety of ballasts and LED drivers. Only InstantFit has over 15,000 lamp & ballast combinations delivering even light output, energy savings and a long lifetime. Our MainsFit products feature a double-ended design, simplifying installation while a proprietary safety circuit minimizes a shock risk. Lamp sizes range from 2-foot to 8-foot and U-bend with a variety of lumen outputs.

Product data

General information	
Cap-Base	G13 [Medium Bi-Pin Fluorescent]
EU RoHS compliant	Yes
Nominal Lifetime (Nom)	70000 h
Switching Cycle	50000X
Light technical	
Color Code	835 [CCT of 3500K]
Beam Angle (Nom)	180 °
Luminous Flux (Nom)	2000 lm
Color Designation	White (WH)
Correlated Color Temperature (Nom)	3500 K
Luminous Efficacy (rated) (Nom)	153.00 lm/W
Color Consistency	<6
Color Rendering Index (Nom)	82
LLMF At End Of Nominal Lifetime (Nom)	70 %
Operating and electrical	
Input Frequency	20000-120000 Hz
Power (Nom)	13 W

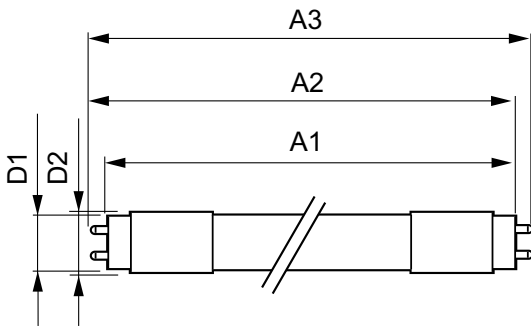
Lamp Current (Max)	400 mA
Lamp Current (Min)	130 mA
Starting Time (Nom)	0.5 s
Warm Up Time to 60% Light (Nom)	0.5 s
UL Type	Type A - works on ballast
Power Factor (Nom)	0.9
Voltage (Nom)	120-277, 347 V
Temperature	
T-Ambient (Max)	45 °C
T-Ambient (Min)	-20 °C
T-Storage (Max)	65 °C
T-Storage (Min)	-40 °C
T-Case Maximum (Nom)	50 °C
Controls and dimming	
Dimmable	Yes
Mechanical and housing	
Bulb Material	Plastic

T8

Product Length	1200 mm
Bulb Shape	Tube, double-ended
Approval and application	
Energy Saving Product	Yes
Approval Marks	RoHS compliance UL certificate DLC compliance
Energy Consumption kWh/1000 h	- kWh
Energy Certifications	DLC Standard

Product data	
Order product name	13T8/MAS/48-835/IF20/P/DIM 10/1
EAN/UPC - Product	046677473938
Order code	929001397734
Numerator - Quantity Per Pack	1
Numerator - Packs per outer box	10
Material Nr. (12NC)	929001397734
Copy Net Weight (Piece)	0.220 kg

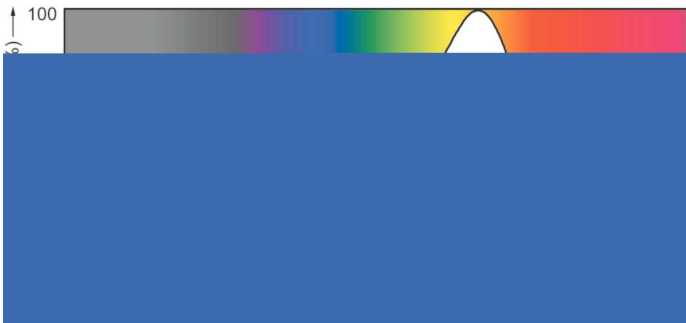
Dimensional drawing



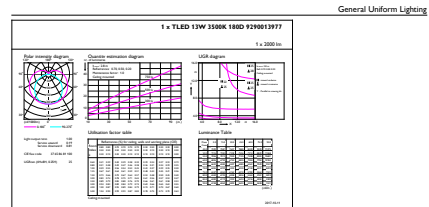
13T8/MAS/48-835/IF20/P/DIM 10/1

Product	D1	D2	A1	A2	A3
13T8/MAS/48-835/IF20/P/DIM 10/1	25.7 mm	26.3 mm	1198.1 mm	1205.2 mm	1212.3 mm

Photometric data



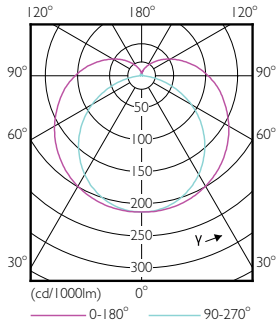
LEDtube 16.5 W, 835, G13, T8, UHO



General Uniform Lighting
CandLUX Photometrics 4.1 Philips Lighting B.V. Page 1/1

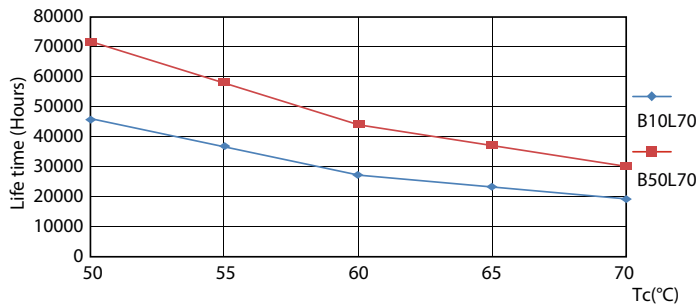
LEDtube 13W G13 835 IF DIM

Photometric data

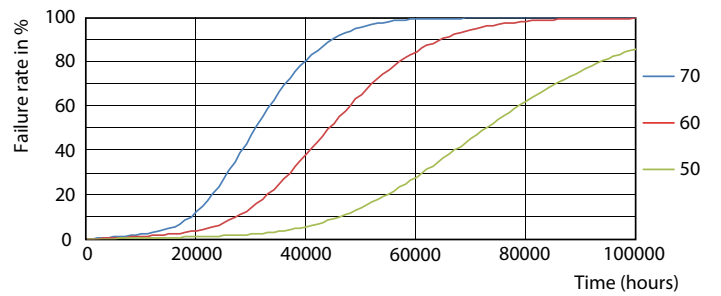


LEDtube 13W G13 2100lm

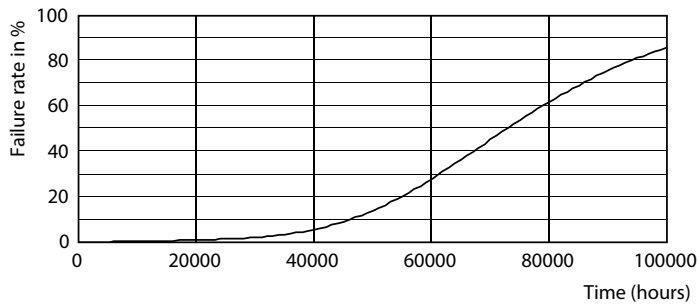
Lifetime



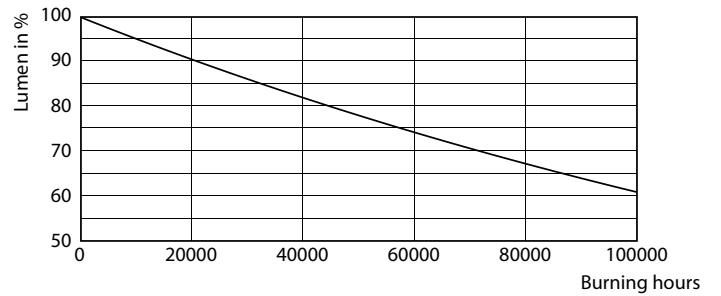
LEDtube 13W G13 2100lm



LEDtube 13W G13 2100lm



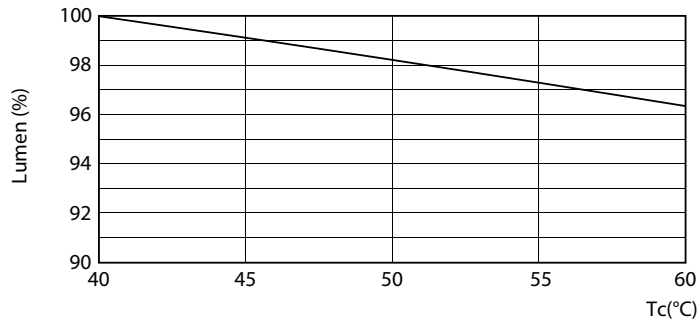
LEDtube 13W G13 2100lm



LEDtube 13W G13 2100lm

T8

Lifetime



LEDtube 13W G13 2100lm

