

MASTER LEDtube InstantFit HF T8



MASTER LEDtube HF 600mm HO 8W865 T8

Philips MASTER LEDtube InstantFit T8 integrates a LED light source into a traditional fluorescent form factor. Its unique design creates a perfectly uniform visual appearance which cannot be distinguished from traditional fluorescent. Philips MASTER LEDtube InstantFit T8 is the ideal solution for customers who have higher light requirements and want to maximize value over lifetime. Full energy savings & longer lifetime result in attractive payback times and TCO benefits.

Warnings and Safety

- NOTES: The overall energy efficiency and light distribution of any installation that uses these lamps are determined by the design of the installation.

Product data

General information	
Cap-Base	G13 ROT (Rotating) [Medium Bi-Pin Fluorescent]
CE mark	Yes
EU RoHS compliant	Yes
Nominal Lifetime (Nom)	60000 h
Switching Cycle	50000
Flux measurement reference	Sphere
Tier	MASTER
Light technical	
Color Code	865 [CCT of 6500K]
Beam Angle (Nom)	160 °
Luminous Flux (Nom)	1050 lm
Color Designation	Cool Daylight

Correlated Color Temperature (Nom)	6500 K
Luminous Efficacy (rated) (Nom)	131.00 lm/W
Color Consistency	<6
Color Rendering Index (Nom)	83
LLMF At End Of Nominal Lifetime (Nom)	70 %

Operating and electrical

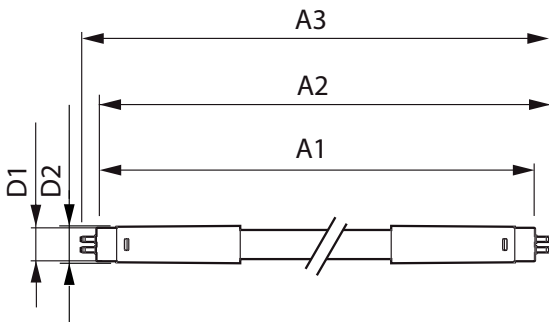
Input Frequency	20000-80000 Hz
Power (Nom)	8 W
Lamp Current (Max)	500 mA
Lamp Current (Min)	150 mA
Starting Time (Nom)	0.5 s
Warm Up Time to 60% Light (Nom)	0.5 s
Power Factor (Nom)	0.9

MASTER LEDtube InstantFit HF T8

Voltage (Nom)	20-50 V
Temperature	
T-Ambient (Max)	45 °C
T-Ambient (Min)	-20 °C
T-Storage (Max)	65 °C
T-Storage (Min)	-40 °C
T-Case Maximum (Nom)	60 °C
Controls and dimming	
Dimmable	No
Mechanical and housing	
Bulb Material	Plastic
Product Length	600 mm
Bulb Shape	Tube, double-ended
Approval and application	
Energy Efficiency Class	E

Energy Saving Product	Yes
Approval Marks	RoHS compliance TUV CE marking KEMA Keur certificate
Energy Consumption kWh/1000 h	8 kWh
EPREL Registration Number	1251111
Product data	
Full product code	871869674367600
Order product name	MASTER LEDtube HF 600mm HO 8W865 T8
EAN/UPC - Product	8718696743676
Order code	929001393302
Numerator - Quantity Per Pack	1
Numerator - Packs per outer box	10
Material Nr. (12NC)	929001393302
Net Weight (Piece)	0.160 kg

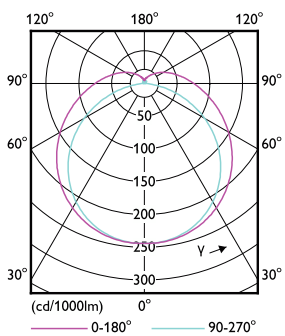
Dimensional drawing



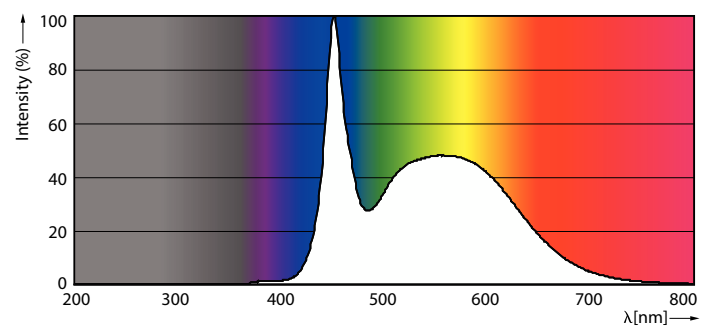
MASTER LEDtube HF 600mm HO 8W865 T8

Product	D1	D2	A1	A2	A3
MASTER LEDtube HF 600mm HO 8W865 T8	25.8 mm	28 mm	588.6 mm	595.7 mm	602.8 mm

Photometric data



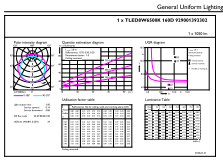
Light Distribution Diagram



Spectral Power Distribution Colour

MASTER LEDtube InstantFit HF T8

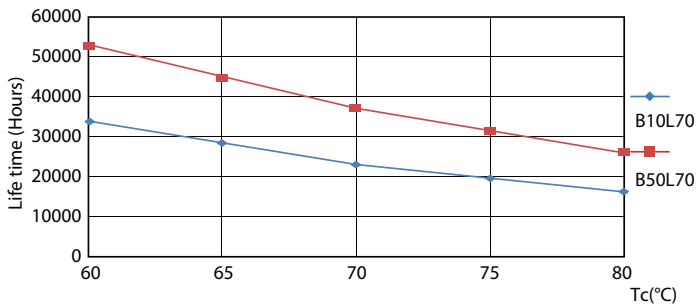
Photometric data



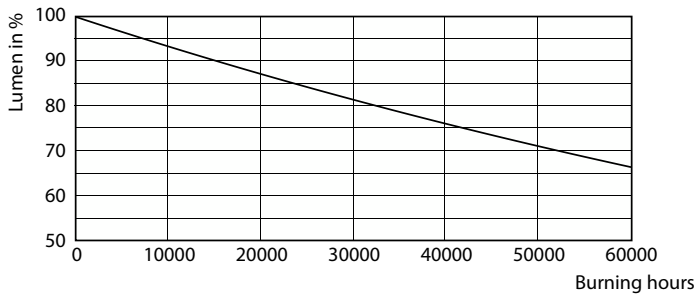
General Uniform Lighting

General uniform lighting

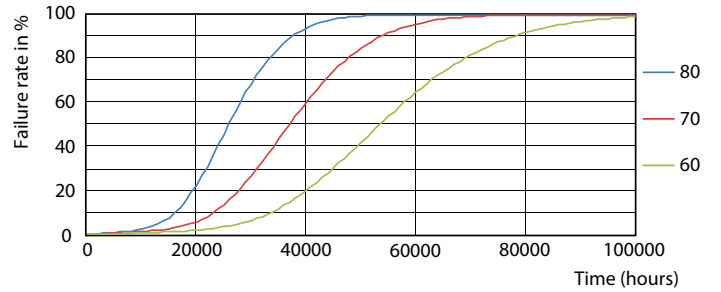
Lifetime



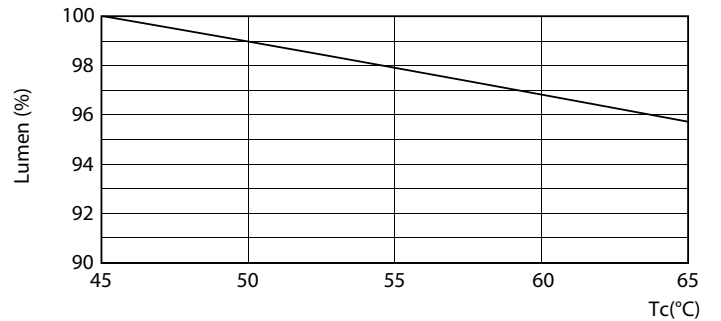
LifetimeVsTc



Lumen Maintenance Diagram



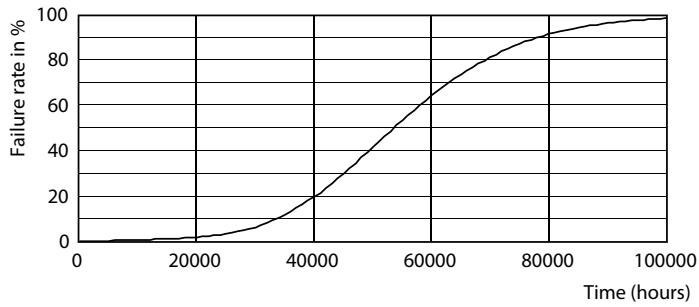
FailureRate



LumenVsTc

MASTER LEDtube InstantFit HF T8

Lifetime



Life Expectancy Diagram

