



MASTER LEDtube InstantFit HF T5

Master LEDtube HF 1200mm HE 16.5W 830 T5

Philips MASTER LEDtube InstantFit T5 integrates a LED light source into a traditional fluorescent form factor. Its unique design creates a perfectly uniform visual appearance which cannot be distinguished from traditional fluorescent. The Philips MASTER LEDtube InstantFit T5 is the ideal solution for customers who have higher light output requirements and want to maximize value over lifetime. Full energy savings & longer lifetime result in attractive payback times and TCO benefits.

Product data

General Information		Power (Nom)	
Cap-Base	G5 [G5]		16.5 W
EU RoHS compliant	Yes	Lamp Current (Max)	350 mA
Nominal Lifetime (Nom)	50000 h	Lamp Current (Min)	150 mA
Switching Cycle	50000X	Starting Time (Nom)	0.5 s
		Warm Up Time to 60% Light (Nom)	0.5 s
		Power Factor (Nom)	0.9
		Voltage (Nom)	90-130 V
Light Technical		Temperature	
Color Code	830 [CCT of 3000K]	T-Ambient (Max)	45 °C
Beam Angle (Nom)	200 °	T-Ambient (Min)	-20 °C
Luminous Flux (Nom)	2300 lm	T-Storage (Max)	65 °C
Color Designation	White (WH)	T-Storage (Min)	-40 °C
Correlated Color Temperature (Nom)	3000 K	T-Case Maximum (Nom)	65 °C
Luminous Efficacy (rated) (Nom)	139.00 lm/W		
Color Consistency	<6	Controls and Dimming	
Color Rendering Index (Nom)	83	Dimmable	No
LLMF At End Of Nominal Lifetime (Nom)	70 %		
Operating and Electrical			
Input Frequency	35000-70000 Hz		

MASTER LEDtube InstantFit HF T5

Mechanical and Housing

Bulb Material	Glass
Product Length	1200 mm

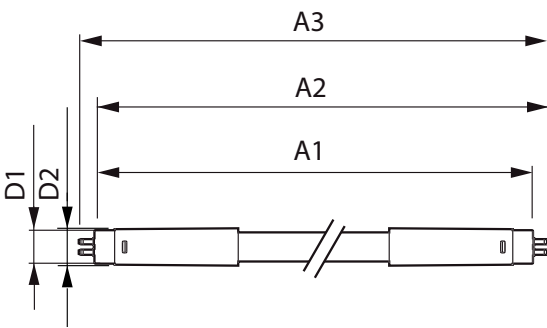
Approval and Application

Energy Efficiency Label (EEL)	A+
Energy Saving Product	Yes
Approval Marks	TUV CE marking RoHS compliance KEMA Keur certificate
Energy Consumption kWh/1000 h	20 kWh

Product Data

Full product code	871869674329400
Order product name	Master LEDtube HF 1200mm HE 16.5W 830 T5
EAN/UPC - Product	8718696743294
Order code	929001391002
Numerator - Quantity Per Pack	1
Numerator - Packs per outer box	10
Material Nr. (12NC)	929001391002
Net Weight (Piece)	0.159 kg

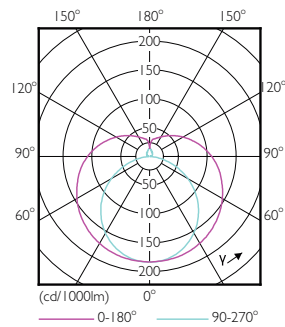
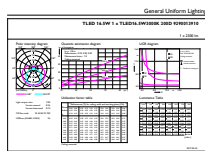
Dimensional drawing



TLED 1200mm 230V14W-28W 2100lm 160D 300

Product	D1	D2	A1	A2	A3
Master LEDtube HF 1200mm HE 16.5W 830 T5	15.5 mm	18.8 mm	1149 mm	1156.1 mm	1163.2 mm

Photometric data

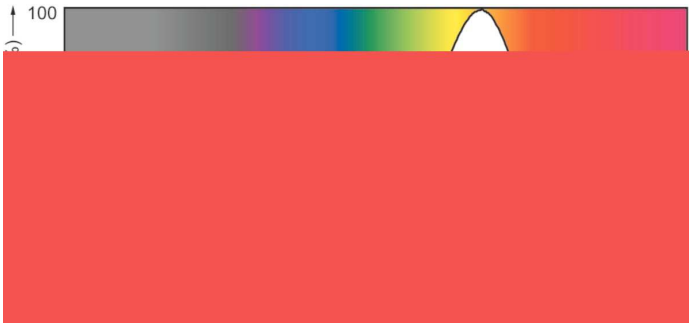


LEDtube 1200mm 16-5W G5 830 2300lm

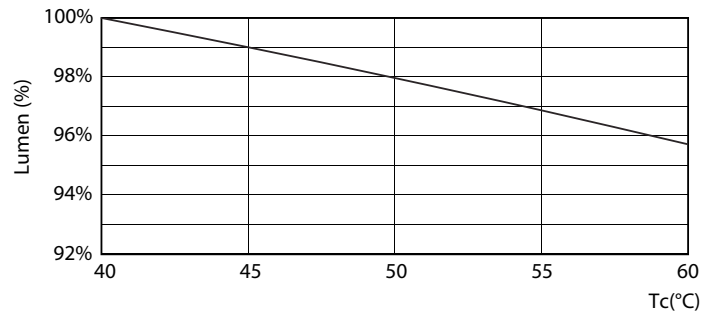
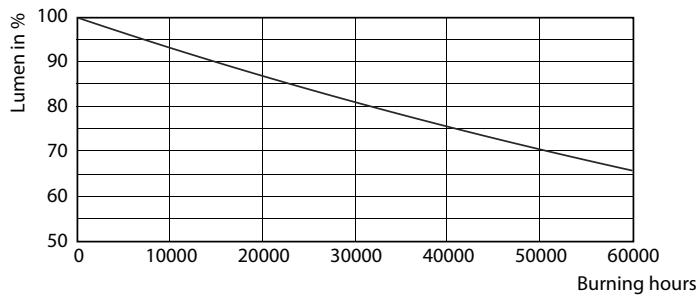
LEDtube 600mm 8W G5 830 1000lm

MASTER LEDtube InstantFit HF T5

Photometric data

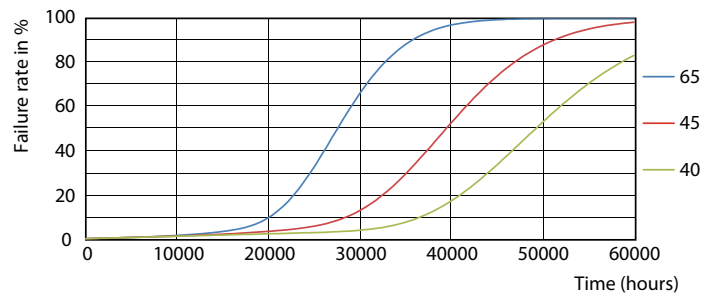
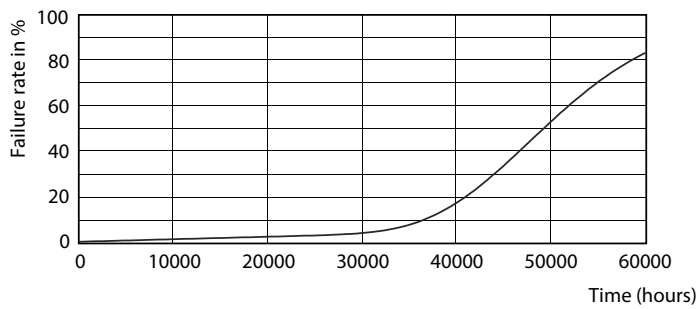


Lifetime



LEDtube 600mm 8W G5 830 1000lm

LEDtube 600mm 8W G5 830 1000lm



LEDtube 600mm 8W G5 830 1000lm

LEDtube 600mm 8W G5 830 1000lm

MASTER LEDtube InstantFit HF T5

Lifetime



LEDtube 600mm 8W G5 830 1000lm

