

MASTER LEDtube EM/ Mains T8

MASTER LEDtube STD 1200mm 14W840 T8 I W

The Philips MASTER LEDtube integrates a LED light source into a traditional fluorescent form factor. Its unique design creates a perfectly uniform visual appearance which cannot be distinguished from traditional fluorescent. For those that are looking for value for money within limited budget and re-lamping efforts for better light effect and lifetime.

Warnings and Safety

- NOTES: The overall energy efficiency and light distribution of any installation that uses these lamps are determined by the design of the installation.

Product data

General Information	
Cap-Base	G13 [Medium Bi-Pin Fluorescent]
EU RoHS compliant	Yes
Nominal Lifetime (Nom)	50000 h
Switching Cycle	200000X
Light Technical	
Color Code	840 [CCT of 4000K]
Beam Angle (Nom)	160 °
Luminous Flux (Nom)	2100 lm
Luminous Flux (Rated) (Nom)	2100 lm
Color Designation	Cool White (CW)
Correlated Color Temperature (Nom)	4000 K
Luminous Efficacy (rated) (Nom)	150.00 lm/W
Color Consistency	<6
Color Rendering Index (Nom)	80

LLMF At End Of Nominal Lifetime (Nom) 70 %	
Operating and Electrical	
Input Frequency	50 to 60 Hz
Power (Nom)	14 W
Lamp Current (Max)	170 mA
Lamp Current (Min)	50 mA
Starting Time (Nom)	0.5 s
Warm Up Time to 60% Light (Nom)	0.5 s
Power Factor (Nom)	0.92
Voltage (Nom)	100-277 V
Temperature	
T-Ambient (Max)	45 °C
T-Ambient (Min)	-20 °C
T-Storage (Max)	65 °C

MASTER LEDtube EM/Mains T8

T-Storage (Min)	-40 °C
T-Case Maximum (Nom)	55 °C

Controls and Dimming

Dimmable	No
----------	----

Mechanical and Housing

Bulb Finish	Frosted
Product Length	1200 mm
Bulb Shape	Tube, double-ended

Approval and Application

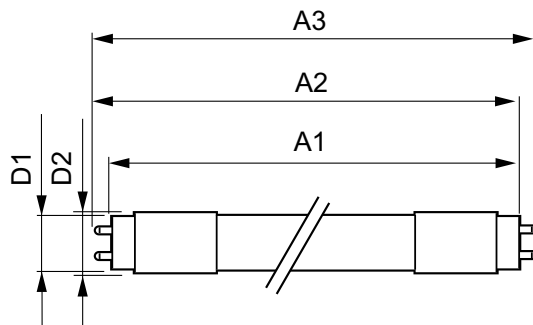
Energy Saving Product	Yes
Approval Marks	RoHS compliance CE marking KEMA Keur certificate

Energy Consumption kWh/1000 h	14 kWh
-------------------------------	--------

Product Data

Order product name	MASTER LEDtube STD 1200mm 14W840 T8 I W
EAN/UPC - Product	046677554224
Order code	929001375442
Numerator - Quantity Per Pack	1
Numerator - Packs per outer box	25
Material Nr. (12NC)	929001375442
Net Weight (Piece)	0.100 kg

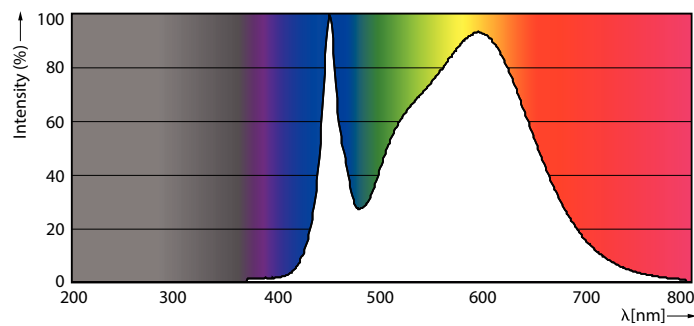
Dimensional drawing



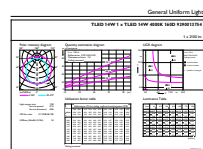
TLED 4ft 100-277V14.5W-36W 4000K G13 ND

Product	D1	D2	A1	A2	A3
MASTER LEDtube STD 1200mm 14W840 T8 I W	25.7 mm	28 mm	1198.2 mm	1205.3 mm	1212.4 mm

Photometric data



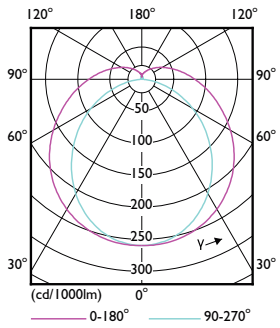
LEDtube PLC/T 12W G24Q 840 32V DIM



MAS LEDtube STD 14W G13 840 ND

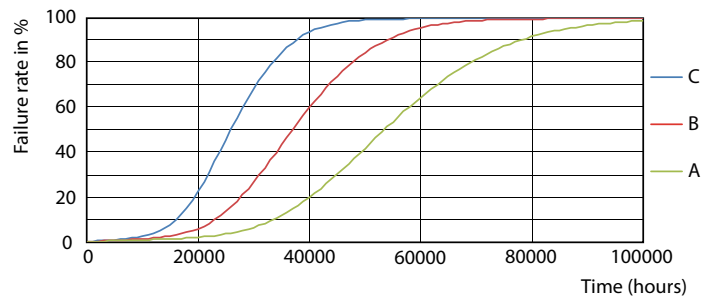
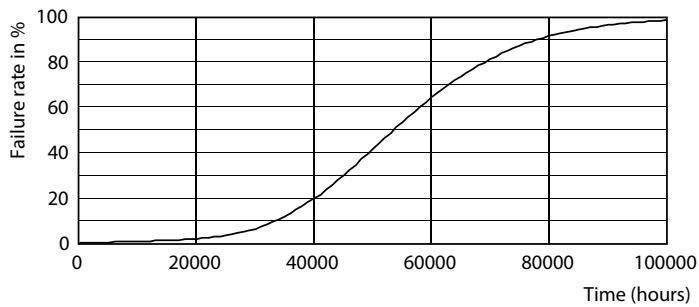
MASTER LEDtube EM/Mains T8

Photometric data



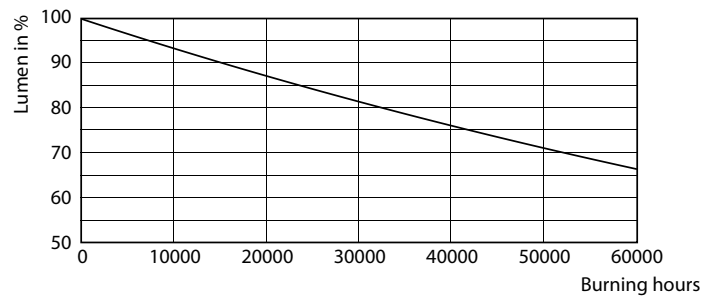
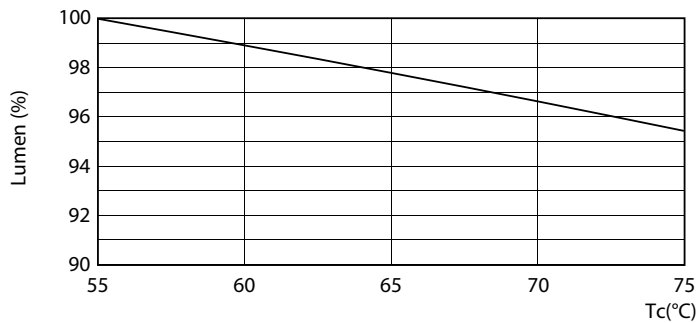
LEDtube 14W G13 LDD

Lifetime



LEDtube 50K-LED

LEDtube 50K FailureRate-LED



LEDtube 14W 50K LumenVsTc

LEDtube 50K-LMP

MASTER LEDtube EM/Mains T8

Lifetime



LEDtube 50K LifetimeVsTc-LED

