



MASTER LEDtube EM/ Mains T8

Master LEDTube 8ft 33W 4000lm 865 T8 BR

The Philips MASTER LEDtube integrates a LED light source into a traditional fluorescent form factor. Its unique design creates a perfectly uniform visual appearance which cannot be distinguished from traditional fluorescent. For those that are looking for value for money within limited budget and re-lamping efforts for better light effect and lifetime.

Warnings and Safety

- NOTES: The overall energy efficiency and light distribution of any installation that uses these lamps are determined by the design of the installation.

Product data

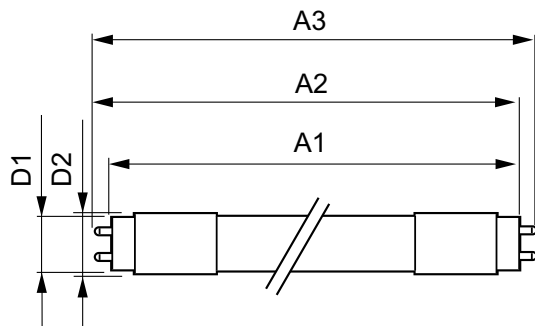
| General Information | | LLMF At End Of Nominal Lifetime (Nom) 70 % | |
|------------------------------------|----------------------------------|--|-------------|
| Cap-Base | G13 [Medium Bi-Pin Fluorescent] | | |
| EU RoHS compliant | Yes | | |
| Nominal Lifetime (Nom) | 25000 h | | |
| Switching Cycle | 50000X | | |
| Light Technical | | Operating and Electrical | |
| Color Code | 865 [CCT of 6500K] | Input Frequency | 50 to 60 Hz |
| Beam Angle (Nom) | 160 ° | Power (Nom) | 33 W |
| Luminous Flux (Nom) | 4000 lm | Lamp Current (Max) | 337 mA |
| Color Designation | Cool Daylight | Lamp Current (Min) | 122 mA |
| Correlated Color Temperature (Nom) | 6500 K | Starting Time (Nom) | 0.5 s |
| Luminous Efficacy (rated) (Nom) | 121.21 lm/W | Warm Up Time to 60% Light (Nom) | 0.5 s |
| Color Consistency | <6 | Power Factor (Nom) | 0.92 |
| Color Rendering Index (Nom) | 80 | Voltage (Nom) | 100-277 V |
| | | Temperature | |
| | | T-Ambient (Max) | 45 °C |
| | | T-Ambient (Min) | -20 °C |
| | | T-Storage (Max) | 65 °C |

MASTER LEDtube EM/Mains T8

| | |
|---------------------------------|--|
| T-Storage (Min) | -40 °C |
| T-Case Maximum (Nom) | 55 °C |
| Controls and Dimming | |
| Dimmable | No |
| Mechanical and Housing | |
| Product Length | 2400 mm |
| Approval and Application | |
| Energy Efficiency Label (EEL) | A+ |
| Energy Saving Product | Yes |
| Approval Marks | CE marking RoHS compliance KEMA Keur certificate |

| | |
|---------------------------------|---|
| Energy Consumption kWh/1000 h | - kWh |
| Product Data | |
| Full product code | 871869674391100 |
| Order product name | Master LEDTube 8ft 33W 4000lm 865 T8 BR |
| EAN/UPC - Product | 8718696743911 |
| Order code | 929001368172 |
| Numerator - Quantity Per Pack | 1 |
| Numerator - Packs per outer box | 10 |
| Material Nr. (12NC) | 929001368172 |
| Net Weight (Piece) | 0.540 kg |

Dimensional drawing



TLED 8ft 35-110W 4000lm 6500K G13 ND

| Product | D1 | D2 | A1 | A2 | A3 |
|--|---------|-------|-----------|-----------|-----------|
| Master LEDTube 8ft 33W 4000lm 865 T8 BR | 25.7 mm | 28 mm | 2373.1 mm | 2380.2 mm | 2387.3 mm |

