



# MASTER LEDtube EM/ Mains T8



## MASTER LEDtube 600mm HO 8W830 T8

The Philips MASTER LEDtube integrates a LED light source into a traditional fluorescent form factor. Its unique design creates a perfectly uniform visual appearance, which cannot be distinguished from traditional fluorescent. These T8 LED tubes are the right choice for absolute performance and are designed to stand up to everyday conditions. Unparalleled savings thanks to low energy consumption and an exceptionally long lifetime ensure this tube masters every demanding application.

### Warnings and Safety

- NOTE: The overall energy efficiency and light distribution of any installation that uses these lamps will be determined by the design of the installation.

### Product data

General information	
Cap-Base	G13 ROT (Rotating) [ Medium Bi-Pin Fluorescent]
EU RoHS compliant	Yes
Nominal Lifetime (Nom)	75000 h
Switching Cycle	200000
Flux measurement reference	Sphere
Tier	MASTER
Light technical	
Color Code	830 [ CCT of 3000K]
Beam Angle (Nom)	160 °
Luminous Flux (Nom)	1000 lm
Color Designation	White (WH)

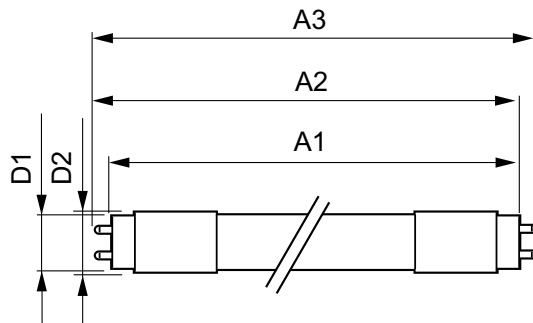
Correlated Color Temperature (Nom)	3000 K
Luminous Efficacy (rated) (Nom)	125 lm/W
Color Consistency	<6
Color Rendering Index (Nom)	83
LLMF At End Of Nominal Lifetime (Nom)	70 %
Operating and electrical	
Input Frequency	50 to 60 Hz
Power (Nom)	8 W
Lamp Current (Max)	42 mA
Lamp Current (Min)	36 mA
Starting Time (Nom)	0.5 s
Warm Up Time to 60% Light (Nom)	0.5 s
Power Factor (Nom)	0.9

# MASTER LEDtube EM/Mains T8

Voltage (Nom)	220-240 V
<b>Temperature</b>	
T-Ambient (Max)	35 °C
T-Ambient (Min)	-20 °C
T-Storage (Max)	65 °C
T-Storage (Min)	-40 °C
T-Case Maximum (Nom)	50 °C
<b>Controls and dimming</b>	
Dimmable	No
<b>Mechanical and housing</b>	
Bulb Finish	Frosted
Bulb Material	Plastic
Product Length	600 mm
Bulb Shape	Tube, double-ended
<b>Approval and application</b>	
Energy Efficiency Class	E

Energy Saving Product	Yes
Approval Marks	RoHS compliance TUV CE marking KEMA Keur certificate
Energy Consumption kWh/1000 h	8 kWh
EPREL Registration Number	1206979
<b>Product data</b>	
Full product code	871869669747400
Order product name	MASTER LEDtube 600mm HO 8W830 T8
EAN/UPC - Product	8718696697474
Order code	929001307002
Numerator - Quantity Per Pack	1
Local code description	MAS LEDtube 600mm HO 8W830 T8
Numerator - Packs per outer box	10
Material Nr. (12NC)	929001307002
Net Weight (Piece)	0.120 kg

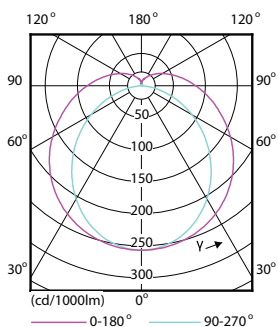
## Dimensional drawing



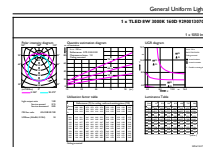
MASTER LEDtube 600mm HO 8W830 T8

Product	D1	D2	A1	A2	A3
MASTER LEDtube 600mm HO 8W830 T8	25.78 mm	28 mm	588.5 mm	595.5 mm	602.5 mm

## Photometric data



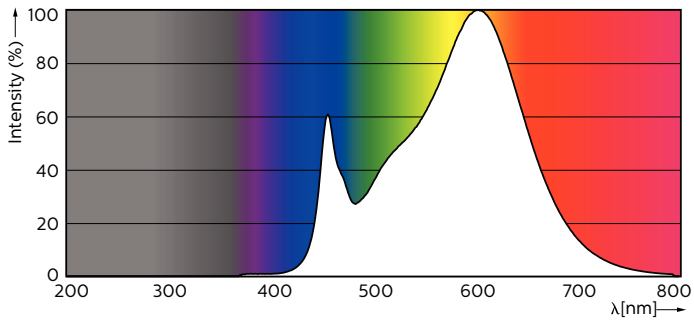
Light Distribution Diagram



General uniform lighting

# MASTER LEDtube EM/Mains T8

## Photometric data

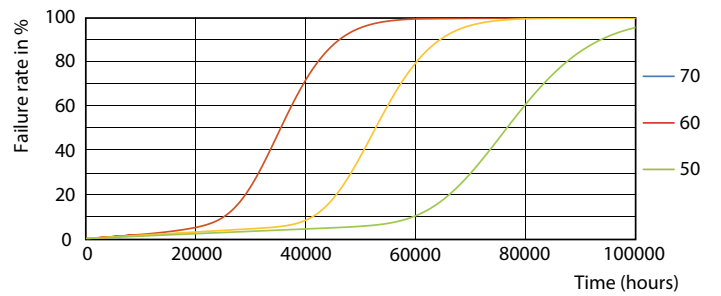


Spectral Power Distribution Colour

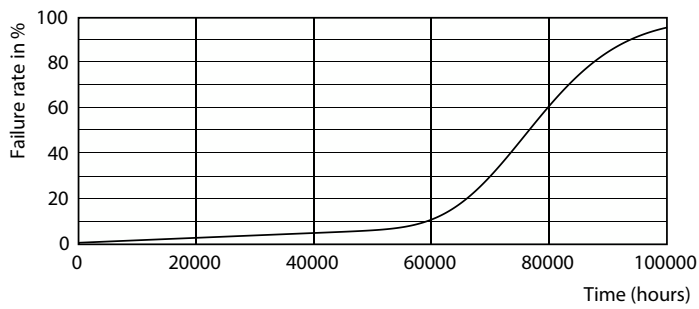
## Lifetime



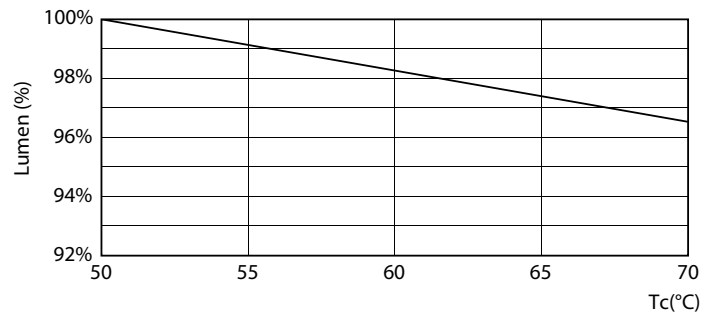
Lumen Maintenance Diagram



FailureRate



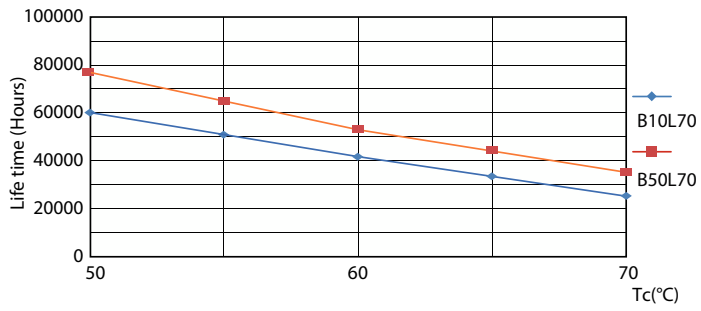
Life Expectancy Diagram



LumenVsTc

# MASTER LEDtube EM/Mains T8

## Lifetime



LifetimeVsTc

