



MASTER LEDtube InstantFit HF T8



MASTER LEDtube HF 1500mm HO 20W830 T8

Philips MASTER LEDtube InstantFit T8 integrates a LED light source into a traditional fluorescent form factor. Its unique design creates a perfectly uniform visual appearance which cannot be distinguished from traditional fluorescent. Philips MASTER LEDtube InstantFit T8 is the ideal solution for customers who have higher light requirements and want to maximize value over lifetime. Full energy savings & longer lifetime result in attractive payback times and TCO benefits.

Warnings and Safety

- NOTES: The overall energy efficiency and light distribution of any installation that uses these lamps are determined by the design of the installation.

Product data

| General information | |
|----------------------------|-------------------------------------------------|
| Cap-Base | G13 ROT (Rotating) [Medium Bi-Pin Fluorescent] |
| CE mark | Yes |
| EU RoHS compliant | Yes |
| Nominal Lifetime (Nom) | 60000 h |
| Switching Cycle | 50000 |
| Flux measurement reference | Sphere |
| Tier | MASTER |
| Light technical | |
| Color Code | 830 [CCT of 3000K] |
| Beam Angle (Nom) | 160 ° |
| Luminous Flux (Nom) | 2900 lm |
| Color Designation | White (WH) |

| | |
|---------------------------------------|-------------|
| Correlated Color Temperature (Nom) | 3000 K |
| Luminous Efficacy (rated) (Nom) | 145.00 lm/W |
| Color Consistency | <6 |
| Color Rendering Index (Nom) | 83 |
| LLMF At End Of Nominal Lifetime (Nom) | 70 % |

Operating and electrical

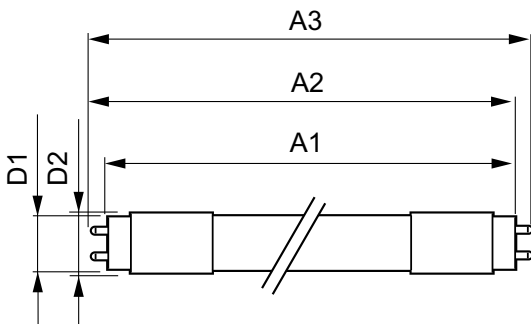
| | |
|---------------------------------|----------------|
| Input Frequency | 20000-75000 Hz |
| Power (Nom) | 20 W |
| Lamp Current (Max) | 750 mA |
| Lamp Current (Min) | 300 mA |
| Starting Time (Nom) | 0.5 s |
| Warm Up Time to 60% Light (Nom) | 0.5 s |
| Power Factor (Nom) | 0.9 |

MASTER LEDtube InstantFit HF T8

| | |
|---------------------------------|--------------------|
| Voltage (Nom) | 30-80 V |
| Temperature | |
| T-Ambient (Max) | 45 °C |
| T-Ambient (Min) | -20 °C |
| T-Storage (Max) | 65 °C |
| T-Storage (Min) | -40 °C |
| T-Case Maximum (Nom) | 55 °C |
| Controls and dimming | |
| Dimmable | No |
| Mechanical and housing | |
| Bulb Material | Plastic |
| Product Length | 1500 mm |
| Bulb Shape | Tube, double-ended |
| Approval and application | |
| Energy Efficiency Class | E |

| | |
|---------------------------------|------------------------------------------------------|
| Energy Saving Product | Yes |
| Approval Marks | RoHS compliance TUV CE marking KEMA Keur certificate |
| Energy Consumption kWh/1000 h | 20 kWh |
| EPREL Registration Number | 387372 |
| Product data | |
| Full product code | 871869668758100 |
| Order product name | MASTER LEDtube HF 1500mm HO 20W830 T8 |
| EAN/UPC - Product | 8718696687581 |
| Order code | 929001284602 |
| Numerator - Quantity Per Pack | 1 |
| Numerator - Packs per outer box | 10 |
| Material Nr. (12NC) | 929001284602 |
| Net Weight (Piece) | 0.450 kg |

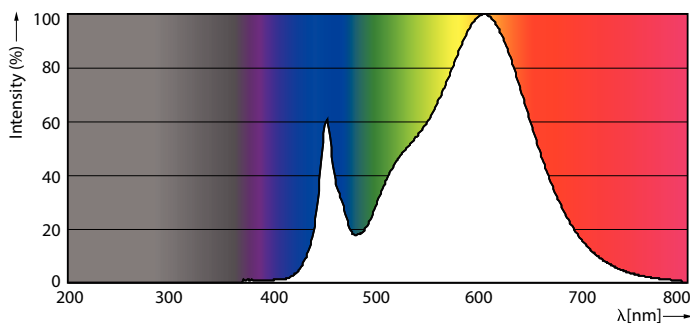
Dimensional drawing



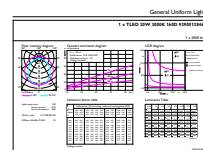
MASTER LEDtube HF 1500mm HO 20W830 T8

| Product | D1 | D2 | A1 | A2 | A3 |
|------------------------------------------|---------|-------|-----------|-----------|-----------|
| MASTER LEDtube HF 1500mm HO 20W830 T8 | 25.6 mm | 28 mm | 1498.7 mm | 1505.8 mm | 1512.9 mm |

Photometric data



MAS LEDtube HF 1500mm HO 20W830 T8



MAS LEDtube HF 1500mm HO 20W830 T8

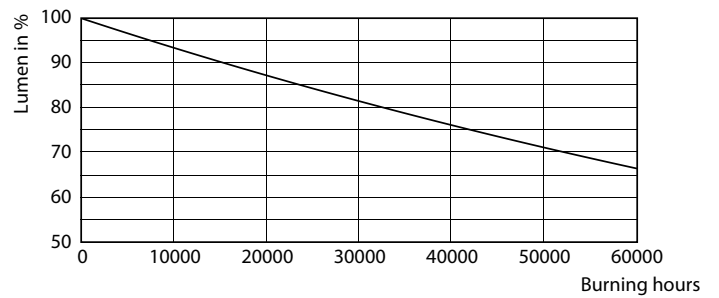
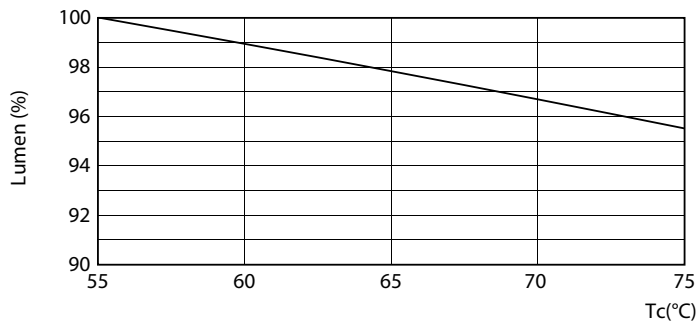
MASTER LEDtube InstantFit HF T8

Photometric data



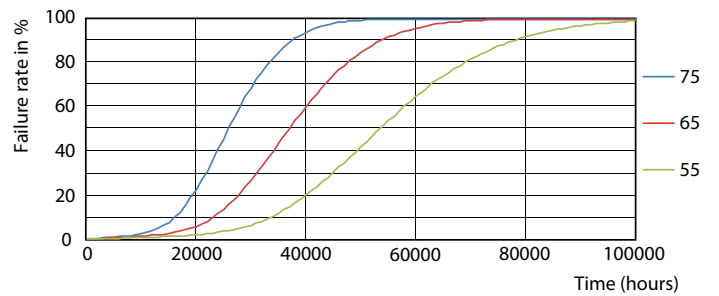
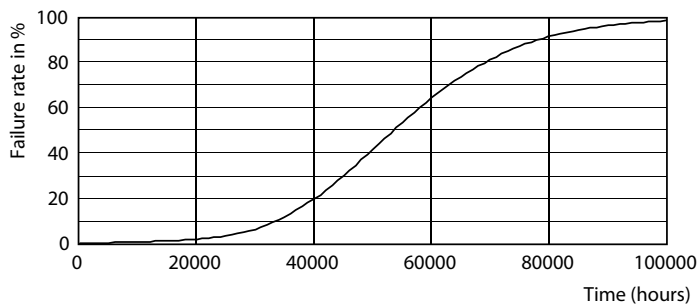
LEDtube HF 1200mm 1500mm UO T8

Lifetime



LEDtube HF 1500mm HO-UO 20-24W G13 830-865 T8

LEDtube HF 1500mm 26W G5 T5



LEDtube HF 1200mm 1500mm UO T8

LEDtube HF HO-UO 14-24W G13 830-865 T8

MASTER LEDtube InstantFit HF T8

Lifetime



LEDtube HF HO-UO 14-24W G13 830-865 T8

