



# Essential LED tubes T5 Mains

## CorePro LEDtube 600mm 8W865 G5 I MX

The Essential LEDtube T5 is an affordable LED solution suitable for replacing T5 fluorescent lamps. Thanks to a unique design, Philips Essential LED tube T5 Mains can be directly installed in luminaires operating on mains power connection. The product provides a natural lighting effect for use in general lighting applications, as well as instant energy savings – an environmentally friendly solution.

### Product data

General Information	
Cap-Base	G5 [ G5]
EU RoHS compliant	Yes
Nominal Lifetime (Nom)	30000 h
Switching Cycle	50000X

Light Technical	
Color Code	865 [ CCT of 6500K]
Beam Angle (Nom)	200 °
Luminous Flux (Nom)	900 lm
Color Designation	Cool Daylight
Correlated Color Temperature (Nom)	6500 K
Luminous Efficacy (rated) (Nom)	112.00 lm/W
Color Consistency	<6
Color Rendering Index (Nom)	80
LLMF At End Of Nominal Lifetime (Nom)	70 %

Operating and Electrical	
Input Frequency	50 to 60 Hz
Power (Nom)	8 W

Lamp Current (Max)	75 mA
Lamp Current (Min)	30 mA
Starting Time (Nom)	0.5 s
Warm Up Time to 60% Light (Nom)	0.5 s
Power Factor (Nom)	0.92
Voltage (Nom)	100-240 V

Temperature	
T-Ambient (Max)	45 °C
T-Ambient (Min)	-20 °C
T-Storage (Max)	65 °C
T-Storage (Min)	-40 °C
T-Case Maximum (Nom)	70 °C

Controls and Dimming	
Dimmable	No

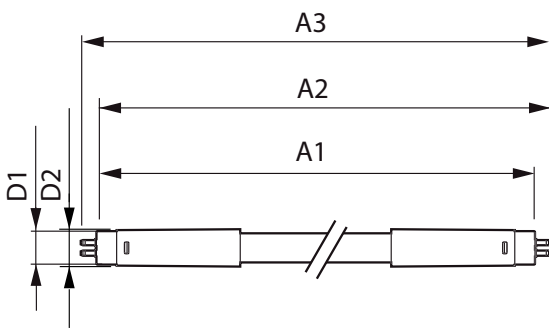
Mechanical and Housing	
Product Length	600 mm

## Essential LED tubes T5 Mains

Bulb Shape	Tube, double-ended
<b>Approval and Application</b>	
Energy Saving Product	Yes
Approval Marks	CE marking RoHS compliance KEMA Keur certificate
Energy Consumption kWh/1000 h	- kWh
<b>Product Data</b>	
Full product code	871869666758300

Order product name	CorePro LEDtube 600mm 8W865 G5 I MX
EAN/UPC - Product	8718696667583
Order code	929001275512
Numerator - Quantity Per Pack	1
Numerator - Packs per outer box	20
Material Nr. (12NC)	929001275512
Net Weight (Piece)	0.080 kg

### Dimensional drawing



TLED 100-240V 8-14W 6500K G5 ND

Product	D1	D2	A1	A2	A3
CorePro LEDtube 600mm 8W865 G5 I MX	15.8 mm	19 mm	549 mm	556.1 mm	563.2 mm

