



# Xitanium LED drivers – full programmable

## Xi FP 165W 0.2–0.7A SNLDAE 230V C170 sXt

Our Xitanium full programmable Xtreme LED drivers are designed to deliver the highest performance, reliability and configuration possibilities. The portfolio offers both stand-alone and remote dimming protocols to further decrease energy use with the latest LED technologies. The proven Xtreme technology ensures maximum robustness and protection for a very long lifetime. These drivers are the preferred choice for demanding applications such as outdoor and industry. Configuration of these drivers can be done via both the universal DALI or with SimpleSet, which is the latest technology for reliable, fast and easy altering and reading out of settings.

### Product data

General Information			
Lighting Technology	LED	Input Current (Nom)	790 mA
Operating and Electrical		Inrush Current Peak (Max)	58 A
Line Frequency	50 to 60 Hz	Output Power (Max)	165 W
Input Frequency	50 to 60 Hz	Output Power (Nom)	85.15 W
Mains voltage operation (DC)	168–275 V	Default output current	70–700 mA
Total Harmonic Distortion IEC (Max)	6 %	Inrush Current Width to 50% of Peak	340 µs
Power Consumption	165 W	Constant Current (CC)	True
Output Current Ripple (Max)	4 %	Constant Voltage (CV)	False
Maximum Efficiency at Full Load	93 %	Diagnostics	True
Output Current (Max)	700 mA	Output Current (Min)	70 mA
Output Current (Nom)	376.5 mA	Output Voltage (Max)	300 V
Output Current Tolerance (Max)	3 %	Output Voltage (Min)	100 V
Mains voltage performance (DC)	186–250 V	Number of Products on MCB (16A Type B)	7
Earth Leakage Current (Max)	0.29 mA	(Max)	
Open Circuit Voltage (DC) (Max)	330 V	Wiring	
		Connector Type Input Terminals	Wago 804

## Xtanium LED drivers – full programmable

Hot Wiring	No
Connector Type Output Terminals	Wago 805
Output Wire Cross Section (Max)	1.5 mm <sup>2</sup>
Output Wire Cross Section (Min)	0.3 mm <sup>2</sup>
Cable Length From Device to Lamp	2.5 m
Input wire strip length	10 mm to 11 mm mm
Input Wire Cross Section (Max)	2.5 mm <sup>2</sup>
Input Wire Cross Section (Min)	0.5 mm <sup>2</sup>
Output wire strip length	9 mm to 10 mm mm

### Temperature

Ambient temperature range	-30 °C to 55 °C
T-Case Lifetime (Nom)	80 °C
T-Case Maximum (Max)	90 °C
Maximum case temperature (in case of failure)	120 °C

### Controls and Dimming

Dimmable	Yes
Control Interface	Dynadimmer,DALI, AmpDimer, LineSwitch
Dimming Range	100-10 %

### Mechanical and Housing

Housing	C170_FP
---------	---------

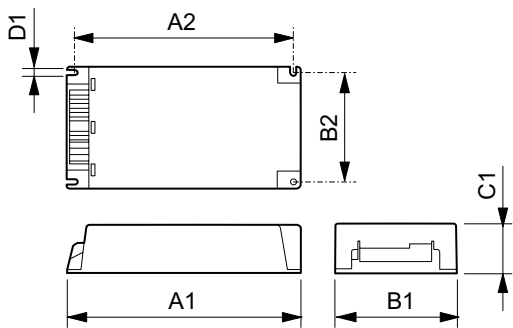
### Approval and Application

Ingress protection code	IP20 [Finger-protected]
Surge Protection (Common/Differential)	EN61547 (L-L 6kV, L-G 8kV) kV
Relative Humidity (Operation) (Max)	90 %
Isolation Classification	Class I and Class II
Short Circuit Protection	Protected
Over Power Protection	Protected
Open Circuit Protection	Protected
Approval Marks	CB compliance CE marking ENEC certificate
Output Current Set Options	Programmable and SimpleSet

### Product Data

Full product code	871869656574200
Order product name	Xi FP 165W 0.2-0.7A SNLDAE 230V C170 sXt
Order code	929000976206
Numerator - Quantity Per Pack	1
Numerator - Packs per outer box	9
Material Nr. (12NC)	929000976206
Full product name	Xi FP 165W 0.2-0.7A SNLDAE 230V C170 sXt
EAN/UPC - Case	8718696565759
EAN/UPC - Product/Case	8718696565742

### Dimensional drawing



Product	A1	B1	C1
Xi FP 165W 0.2-0.7A SNLDAE 230V C170 sXt	170 mm	100 mm	40 mm

## Xtitanium LED drivers – full programmable

