

LED transformer

ET-E 10 W LED 220-240V

The new LED transformer 12W 12V operates with 12Vdc LED loads from 6W to 12W, with high performance inside. The mains voltage range of 110 to 240V. The output voltage is a stable and safe 12Vdc, and it has long lifetime (30,000 hours). It's compact size and light weight allows to use it in several different types of installation.

Product data

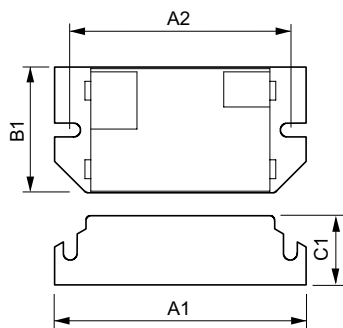
General Information	
Automatic Restart	-
Operating and Electrical	
Input Voltage	220 to 240 V
Input Frequency	50 to 60 Hz
Operating Frequency (Nom)	50-60 kHz
Power Factor 100% Load (Nom)	0.95
Mains Voltage Performance (AC)	180...270V
Mains Voltage Safety (AC)	Not specified
Inrush Current Width	0.25 ms
Power Losses (Nom)	1 W
Inrush Current Peak (Max)	5 A
Output Voltage	12 V
Wiring	
Connector Type Input Terminals	push
Cable Capacity Wires Device to Lamp (Max)	100 nF
Color Input Terminals	Orange
Color Output Terminals	White
Connector Type Output Terminals	Screw
Cable Length From Device to Lamp	0.5 m

Cable Capacity Output Wires to Earth (Max)	100 pF
System characteristics	
Rated Ballast-Lamp Power	10 W
Temperature	
T-Ambient (Max)	50 °C
T-Ambient (Min)	0 °C
T-Storage (Max)	80 °C
T-Storage (Min)	-40 °C
T-Case Maximum (Max)	65 °C
Approval and Application	
Hum And Noise Level	< 30 dB(A)
Product Data	
Full product code	871869641775100
Order product name	ET-E 10 W LED 220-240V
EAN/UPC - Product	8718696417751
Order code	913712911566
Numerator - Quantity Per Pack	1
Numerator - Packs per outer box	20

LED transformer

Material Nr. (12NC)	913712911566
Net Weight (Piece)	0.040 kg

Dimensional drawing



ET-E 10 220-240V 50/60Hz

Product	A1	A2	B1	C1	D1
ET-E 10 W LED 220-240V	80 mm	70 mm	40 mm	22 mm	4.4 mm

