



HID-Basic ballasts for HPL and HPI(PLUS) lamps

BHL 400L 200

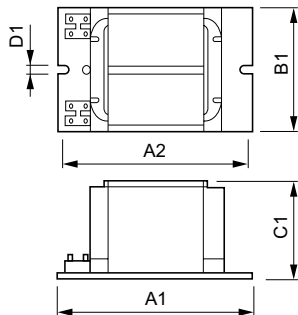
The HID-Basic ballast is an impregnated (HID standard) electromagnetic ballast for HID lamps, for use in combination with an external ignitor.

Product data

General Information		Temperature	
Application Code	L200	T-Winding (Max)	130 °C
		Delta-T Normal Conditions	70 °C
Operating and Electrical		Approval and Application	
Input Voltage	220 V	Approval Marks	CE marking CCC certificate
Input Frequency	50 Hz		
Power Factor 100% Load (Min)	0.85	Product Data	
Mains Voltage Performance (AC)	-8%~+6%	Full product code	694818229964200
Mains Voltage Safety (AC)	-10%~+10%	Order product name	BHL 400L 200
Input Current with PF Correction	2.15 A	EAN/UPC - Product	6948182295309
Input Current without PF Correction	3.25 A	Order code	913710100542
Power Factor without PF Compensation (Nom)	0.60	Numerator - Quantity Per Pack	1
Power Losses (Nom)	21.8 W	Numerator - Packs per outer box	6
		Material Nr. (12NC)	913710100542
Wiring		Net Weight (Piece)	2.780 kg
Connector Type	Screw		
System characteristics			
Rated Ballast-Lamp Power	400 W		

HID-Basic ballasts for HPL and HPI(PLUS) lamps

Dimensional drawing



Product	D1	C1	A1	A2	B1
BHL 400L 200	6.2 mm	64.5 mm	150.0 mm	135.0 mm	75.5 mm

BHL 400 L200

