



Electronic parallel ignitor for HID lamp circuits

SI 51 Plus

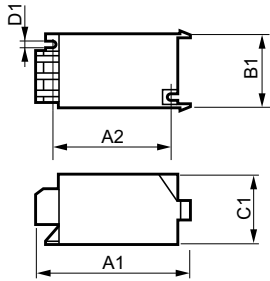
HID ignitors for parallel systems

Product data

General Information		T-Ambient (Min)		T-Case Maximum (Max)	
Application Code	SI 51 Plus		-20 °C		80 °C
Operating and Electrical		Mechanical and Housing			
Input Voltage	220 to 240 V	Housing	Akulon S223		
Input Frequency	50 to 60 Hz	Approval and Application			
Igniton Type	Parallel	Approval Marks	CE marking ENEC certificate		
Ignition Voltage (Max)	0.75 kV	Product Data			
Ignition Voltage (Min)	0.58 kV	Full product code	697013372887100		
Response Voltage	190 V	Order product name	SI 51 Plus		
Mains Voltage Performance (AC)	-8% - +6%	EAN/UPC - Product	6970133728871		
Mains Voltage Safety (AC)	-10% - +10%	Order code	913710011113		
Power Losses (Nom)	0.5 W	Numerator - Quantity Per Pack	1		
Wiring		Numerator - Packs per outer box	48		
Ballast Contact Wire Cross Section	0.50-2.50 mm ²	Material Nr. (12NC)	913710011113		
Connector Type	Screw	Net Weight (Piece)	0.049 kg		
Temperature					
T-Ambient (Max)	75 °C				

Electronic parallel ignitor for HID lamp circuits

Dimensional drawing



Product	C1	A1	A2	B1	D1
SI 51 Plus	38.5 mm	85.5 mm	65.0 mm	41.5 mm	4.3 mm

SI 51 Plus

