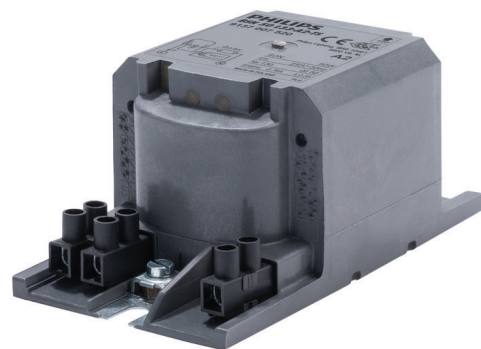


PHILIPS

Lighting



HID-HeavyDuty BSN semi-parallel for SON/CDO/MH/HPI

BSN 50 L33-A2-TS 230V 50Hz

Encapsulated electromagnetic copper/iron ballasts for use with an external semi-parallel ignitor for CDM, CDO, MH, HPI (Plus) and SON lamps

Product data

General Information		System characteristics	
Application Code	L33-A2-TS	Ballast Contact Wire Cross Section	2.5 mm ²
Design	HD1-118	Connector Type	Screw
Lamp Type	SON	Capacitor	10µF/250V
Number of Lamps	1 piece/unit	Rated Ballast-Lamp Power	50 W
Operating and Electrical		Recommended Ignitor	for SON lamps ignitor SND57 (913700184966) or series digital SUD10 (913700195891)
Input Voltage	230 V	Temperature	
Input Frequency	50 Hz	T-Storage (Max)	130 °C
Power Factor 100% Load (Nom)	0.85	T-Storage (Min)	-30 °C
Mains Voltage Performance (AC)	-8% - +6%	T-Winding (Max)	130 °C
Mains Voltage Safety (AC)	-10% - +10%	Delta-T Normal Conditions	50 °C
Input Current with PF Correction	0.35 A	Approval and Application	
Input Current without PF Correction	0.76 A	Active Temperature Protection	Yes
Power Factor without PF Compensation (Nom)	0.35	Approval Marks	CE marking ENEC certificate
Power Losses (Nom)	8.6 W		
Wiring			
Wire Striplength	6.0 mm		

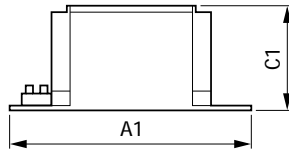
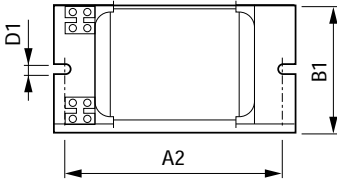
HID-HeavyDuty BSN semi-parallel for SON/CDO/MH/HPI

Product Data

Full product code	871869674080400
Order product name	BSN 50 L33-A2-TS 230V 50Hz
EAN/UPC - Product	8718696740804
Order code	913700752026
Numerator - Quantity Per Pack	1

Numerator - Packs per outer box	6
Material Nr. (12NC)	913700752026
Net Weight (Piece)	1.270 kg

Dimensional drawing



Product	A1	A2	B1	C1	D1
BSN 50 L33-A2-TS 230V 50Hz	118 mm	103 mm	65 mm	53 mm	6.2 mm

BSN 50 L33-A2-TS 230V 50Hz

