



# HID ignitors for series systems

## SX 131 220-240V 50/60Hz

HID ignitors for series systems

### Product data

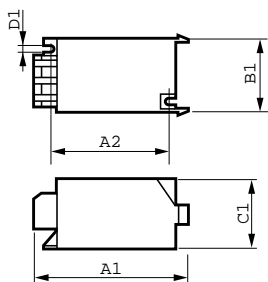
General Information	
Application Code	131
Lamp Type	SOX-E
Number of Lamps	1 piece/unit
Operating and Electrical	
Input Voltage	220 to 240 V
Input Frequency	50 to 60 Hz
Igniton Type	Parallel
Ignition Voltage (Max)	1.4 kV
Response Voltage	198 V
Mains Voltage Performance (AC)	-8% - +6%
Mains Voltage Safety (AC)	-10% - +10%
Power Losses (Nom)	1.0 W
Wiring	
Cable Capacity Wires Device to Lamp (Nom)	5 nF
Wire Striplength	6.0 mm
Ballast Contact Wire Cross Section	0.50-2.50 mm <sup>2</sup>
Connector Type	Screw

System characteristics	
Rated Ballast-Lamp Power	131 W
Temperature	
T-Ambient (Max)	75 °C
T-Ambient (Min)	-20 °C
T-Storage (Max)	80 °C
T-Storage (Min)	-25 °C
T-Case Maximum (Max)	80 °C
Mechanical and Housing	
Housing	SNI-85
Approval and Application	
Approval Marks	CE marking ENEC certificate
Product Data	
Full product code	871150091589430
Order product name	SX 131 220-240V 50/60Hz
EAN/UPC - Product	8711500915894
Order code	913700625366
Numerator - Quantity Per Pack	1
Numerator - Packs per outer box	48

## HID ignitors for series systems

Material Nr. (12NC)	913700625366
Net Weight (Piece)	0.050 kg

### Dimensional drawing



Product	C1	A1	B1
SX 131 220-240V 50/60Hz	38.5 mm	85.5 mm	41.5 mm

SX 131 220-240V 50/60Hz

