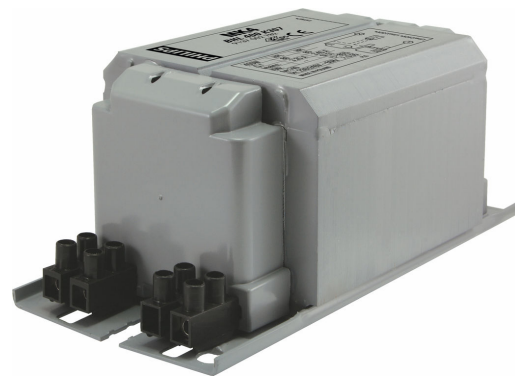


**PHILIPS**

Lighting



# HID-HeavyDuty BHL for HPL/HPI

## BHL 400 L40-A2 230V 50Hz HD2-151

Encapsulated electromagnetic copper/iron ballasts for HPL, HPI (Plus) and SON-H lamps

### Product data

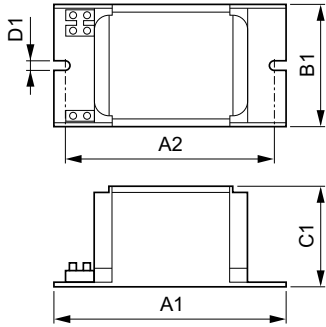
General information		Connector Type	Screw
Application Code	L40-A2	<b>System characteristics</b>	
Design	HD2-151	Capacitor	25µF/28µF/250V (230V/240V)
Lamp Type	HPL/HPI	Rated Ballast-Lamp Power	400 W
Number of Lamps	1 piece/unit	Recommended Ignitor	no ignitor for HPL-N for HPI-T ignitor SI51 (913619519966)
<b>Operating and electrical</b>		<b>Temperature</b>	
Input Voltage	230 V	T-Storage (Max)	130 °C
Input Frequency	50 Hz	T-Storage (Min)	-30 °C
Power Factor 100% Load (Nom)	0.87	T-Winding (Max)	130 °C
Mains Voltage Performance (AC)	-8%+6%	Delta-T Normal Conditions	80 °C
Mains Voltage Safety (AC)	-10%+10%	<b>Approval and application</b>	
Input Current with PF Correction	2.15 A	Approval Marks	CE marking ENEC certificate
Input Current without PF Correction	3.25 A	<b>Product data</b>	
Power Factor without PF Compensation (Nom)	0.55	Full product code	87115009195330
Power Losses (Nom)	22.0 W	Order product name	BHL 400 L40-A2 230V 50Hz HD2-151
<b>Wiring</b>		EAN/UPC - Product	8711500919533
Wire Striplength	7.0 mm	Order code	913604920426
Ballast Contact Wire Cross Section	0.70-6.00 mm <sup>2</sup>		

## HID-HeavyDuty BHL for HPL/HPI

Numerator - Quantity Per Pack	1
Numerator - Packs per outer box	6
Material Nr. (12NC)	913604920426

Net Weight (Piece)	2.750 kg
--------------------	----------

### Dimensional drawing



BHL 400 L40-A2 230V 50Hz HD2-151

Product	D1	C1	A1	A2	B1
BHL 400 L40-A2 230V 50Hz	6.2 mm	66.0 mm	151.0 mm	132.5 mm	81.0 mm
HD2-151					

