



# UniFlood C

## BVP324 72LED RGB 220V 15 DMX

UniFlood C - 6700 lm - 150 W - - K

UniFlood C is a circular shaped, exterior-rated and cost-effective architectural LED floodlight that is designed for façade, landscape and outdoor flood lighting applications. The robust mechanical design and high-efficiency optical design make it ideal for illuminating multi-story exterior facades, bridges, landmarks and monuments. Available in white, monochromatic colors, RGB, RGBW and tunable white. Six different spread lenses ranging from narrow spot to wide flood and DMX512/RDM control option available to give architects and designers the freedom to explore a wide range of concepts and design with no limitations.

### Warnings and Safety

- For outdoor use only

### Product data

General Information	
Light source color	Red, green and blue
Light source replaceable	No
Number of gear units	1 unit
Driver/power unit/transformer	Power supply unit with DMX interface
Driver included	Yes
Optical cover/lens type	Flat glass
Luminaire light beam spread	15°
Control interface	Dynamic DMX/RDM
Connection	Flying leads/wires and 2 Push-in connector 4-pole
Cable	Cable 0.5 m without plug 3-pole and 2 Cables 0.5 m with connector 4-pole
Protection class IEC	Safety class I

Flammability mark	For mounting on normally flammable surfaces
CE mark	CE mark
Constant light output	No
Number of products on MCB of 16 A type B	3
Light source engine type	LED
Serviceability class	Class B, luminaire is equipped with some serviceable parts (when applicable): driver, control units, surge protection device, front cover and mechanical parts

### Operating and Electrical

Input Voltage	220 to 240 V
Input Frequency	50 to 60 Hz

# UniFlood C

Inrush current	70 A
Inrush time	0.65 ms
Power Factor (Min)	0.9

## Controls and Dimming

Dimmable	Yes
----------	-----

## Mechanical and Housing

Housing Material	Aluminum die cast
Optic material	Polymethyl methacrylate
Optical cover/lens material	Tempered glass
Fixation material	Steel
Mounting device	Mounting bracket adjustable
Optical cover/lens shape	Flat
Optical cover/lens finish	Clear
Overall length	390 mm
Overall width	332 mm
Overall height	183 mm
Overall diameter	332 mm
Color	Dark gray

## Approval and Application

Ingress protection code	IP66 [ Dust penetration-protected, jet-proof]
Mech. impact protection code	IK08 [ 5 J vandal-protected]

## Initial Performance (IEC Compliant)

Initial luminous flux (system flux)	6700 lm
Luminous flux tolerance	+/-10%
Initial LED luminaire efficacy	45 lm/W
Init. Corr. Color Temperature	- K
Init. Color Rendering Index	-
Initial input power	150 W
Power consumption tolerance	+/-10%

## Application Conditions

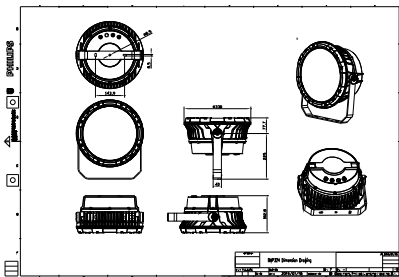
Ambient temperature range	-40 to +50 °C
Maximum dim level	1%

## Product Data

Full product code	911401741342
Order product name	BVP324 72LED RGB 220V 15 DMX
Order code	911401741342
Numerator - Quantity Per Pack	1
Numerator - Packs per outer box	1
Material Nr. (12NC)	911401741342
Net Weight (Piece)	10.399 kg



## Dimensional drawing



BVP321/322/323/324

## UniFlood C

