



# UniFlood C

## BVP324 72LED 30K 220V 8

UniFlood C - 8885 lm - 150 W - 3000 K

UniFlood C is a circular shaped, exterior-rated and cost-effective architectural LED floodlight that is designed for façade, landscape and outdoor flood lighting applications. The robust mechanical design and high-efficiency optical design make it ideal for illuminating multi-story exterior facades, bridges, landmarks and monuments. Available in white, monochromatic colors, RGB, RGBW and tunable white. Six different spread lenses ranging from narrow spot to wide flood and DMX512/RDM control option available to give architects and designers the freedom to explore a wide range of concepts and design with no limitations.

### Warnings and Safety

- For outdoor use only

### Product data

General Information		Operating and Electrical	
Light source color	Warm white	CE mark	CE mark
Light source replaceable	No	Constant light output	No
Number of gear units	1 unit	Number of products on MCB of 16 A type B	3
Driver/power unit/transformer	Power supply unit	Light source engine type	LED
Driver included	Yes	Serviceability class	Class B, luminaire is equipped with some serviceable parts (when applicable): driver, control units, surge protection device, front cover and mechanical parts
Optical cover/lens type	Flat glass		
Luminaire light beam spread	8°		
Control interface	-		
Connection	Flying leads/wires	Input Voltage	220 to 240 V
Cable	Cable 0.5 m without plug 3-pole	Input Frequency	50 to 60 Hz
Protection class IEC	Safety class I	Inrush current	65 A
Flammability mark	For mounting on normally flammable surfaces	Inrush time	0.55 ms

# UniFlood C

Power Factor (Min)	0.9
<b>Controls and Dimming</b>	
Dimmable	No
<b>Mechanical and Housing</b>	
Housing Material	Aluminum die cast
Optic material	Polymethyl methacrylate
Optical cover/lens material	Tempered glass
Fixation material	Steel
Mounting device	Mounting bracket adjustable
Optical cover/lens shape	Flat
Optical cover/lens finish	Clear
Overall length	390 mm
Overall width	332 mm
Overall height	183 mm
Overall diameter	332 mm
Color	Dark gray
<b>Approval and Application</b>	
Ingress protection code	IP66 [ Dust penetration-protected, jet-proof]
Mech. impact protection code	IK08 [ 5 J vandal-protected]

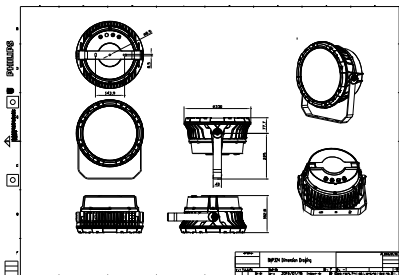
<b>Initial Performance (IEC Compliant)</b>	
Initial luminous flux (system flux)	8885 lm
Luminous flux tolerance	+/-10%
Initial LED luminaire efficacy	59 lm/W
Init. Corr. Color Temperature	3000 K
Init. Color Rendering Index	80
Initial chromaticity	SDCM = 4
Initial input power	150 W
Power consumption tolerance	+/-10%

<b>Application Conditions</b>	
Ambient temperature range	-40 to +50 °C

<b>Product Data</b>	
Full product code	911401741242
Order product name	BVP324 72LED 30K 220V 8
Order code	911401741242
Numerator - Quantity Per Pack	1
Numerator - Packs per outer box	1
Material Nr. (12NC)	911401741242
Net Weight (Piece)	10.399 kg



## Dimensional drawing



BVP321/322/323/324

