



UniFlood C

BVP323 36LED RGBNW 220V 40 DMX

UniFlood C - 3765 lm - 80 W - 4000 K

UniFlood C is a circular shaped, exterior-rated and cost-effective architectural LED floodlight that is designed for façade, landscape and outdoor flood lighting applications. The robust mechanical design and high-efficiency optical design make it ideal for illuminating multi-story exterior facades, bridges, landmarks and monuments. Available in white, monochromatic colors, RGB, RGBW and tunable white. Six different spread lenses ranging from narrow spot to wide flood and DMX512/RDM control option available to give architects and designers the freedom to explore a wide range of concepts and design with no limitations.

Warnings and Safety

- For outdoor use only

Product data

General Information	
Light source color	Red, green, blue and white
Light source replaceable	No
Number of gear units	1 unit
Driver/power unit/transformer	Power supply unit with DMX interface
Driver included	Yes
Optical cover/lens type	Flat glass
Luminaire light beam spread	40°
Control interface	Dynamic DMX/RDM
Connection	Flying leads/wires and 2 Push-in connector 4-pole
Cable	Cable 0.5 m without plug 3-pole and 2 Cables 0.5 m with connector 4-pole
Protection class IEC	Safety class I

Flammability mark	For mounting on normally flammable surfaces
CE mark	CE mark
Constant light output	No
Number of products on MCB of 16 A type B 4	
Light source engine type	LED
Serviceability class	Class B, luminaire is equipped with some serviceable parts (when applicable): driver, control units, surge protection device, front cover and mechanical parts

Operating and Electrical

Input Voltage	220 to 240 V
Input Frequency	50 to 60 Hz

UniFlood C

Inrush current	60 A
Inrush time	0.65 ms
Power Factor (Min)	0.9

Controls and Dimming

Dimmable	Yes
----------	-----

Mechanical and Housing

Housing Material	Aluminum die cast
Optic material	Polymethyl methacrylate
Optical cover/lens material	Tempered glass
Fixation material	Steel
Mounting device	Mounting bracket adjustable
Optical cover/lens shape	Flat
Optical cover/lens finish	Clear
Overall length	315 mm
Overall width	262 mm
Overall height	169 mm
Overall diameter	262 mm
Color	Dark gray

Approval and Application

Ingress protection code	IP66 [Dust penetration-protected, jet-proof]
Mech. impact protection code	IK08 [5 J vandal-protected]

Initial Performance (IEC Compliant)

Initial luminous flux (system flux)	3765 lm
Luminous flux tolerance	+/-10%
Initial LED luminaire efficacy	47 lm/W
Init. Corr. Color Temperature	4000 K
Init. Color Rendering Index	-
Initial input power	80 W
Power consumption tolerance	+/-10%

Application Conditions

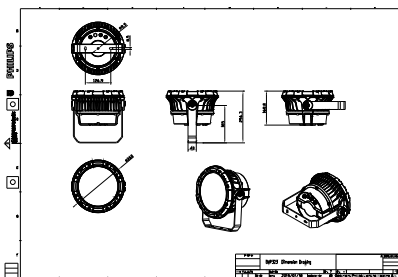
Ambient temperature range	-40 to +50 °C
Maximum dim level	1%

Product Data

Full product code	911401740762
Order product name	BVP323 36LED RGBNW 220V 40 DMX
Order code	911401740762
Numerator - Quantity Per Pack	1
Numerator - Packs per outer box	2
Material Nr. (12NC)	911401740762
Net Weight (Piece)	5.199 kg



Dimensional drawing



BVP321/322/323/324

UniFlood C

