



UniFlood C

BVP323 36LED 30K 220V 40 DMX

UniFlood C - 4570 lm - 80 W - 3000 K

UniFlood C is a circular shaped, exterior-rated and cost-effective architectural LED floodlight that is designed for façade, landscape and outdoor flood lighting applications. The robust mechanical design and high-efficiency optical design make it ideal for illuminating multi-story exterior facades, bridges, landmarks and monuments. Available in white, monochromatic colors, RGB, RGBW and tunable white. Six different spread lenses ranging from narrow spot to wide flood and DMX512/RDM control option available to give architects and designers the freedom to explore a wide range of concepts and design with no limitations.

Warnings and Safety

- For outdoor use only

Product data

| General Information | |
|-------------------------------|---|
| Light source color | Warm white |
| Light source replaceable | No |
| Number of gear units | 1 unit |
| Driver/power unit/transformer | Power supply unit with DMX interface |
| Driver included | Yes |
| Optical cover/lens type | Flat glass |
| Luminaire light beam spread | 40° |
| Control interface | Dynamic DMX/RDM |
| Connection | Flying leads/wires and 2 Push-in connector 4-pole |
| Cable | Cable 0.5 m without plug 3-pole and 2 Cables 0.5 m with connector 4-pole |
| Protection class IEC | Safety class I |

| | |
|--|--|
| Flammability mark | For mounting on normally flammable surfaces |
| CE mark | CE mark |
| Constant light output | No |
| Number of products on MCB of 16 A type B 4 | |
| Light source engine type | LED |
| Serviceability class | Class B, luminaire is equipped with some serviceable parts (when applicable): driver, control units, surge protection device, front cover and mechanical parts |

| Operating and Electrical | |
|--------------------------|--------------|
| Input Voltage | 220 to 240 V |
| Input Frequency | 50 to 60 Hz |

UniFlood C

| | |
|--------------------|---------|
| Inrush current | 60 A |
| Inrush time | 0.65 ms |
| Power Factor (Min) | 0.9 |

Controls and Dimming

| | |
|----------|-----|
| Dimmable | Yes |
|----------|-----|

Mechanical and Housing

| | |
|-----------------------------|-----------------------------|
| Housing Material | Aluminum die cast |
| Optic material | Polymethyl methacrylate |
| Optical cover/lens material | Tempered glass |
| Fixation material | Steel |
| Mounting device | Mounting bracket adjustable |
| Optical cover/lens shape | Flat |
| Optical cover/lens finish | Clear |
| Overall length | 315 mm |
| Overall width | 262 mm |
| Overall height | 169 mm |
| Overall diameter | 262 mm |
| Color | Dark gray |

Approval and Application

| | |
|------------------------------|---|
| Ingress protection code | IP66 [Dust penetration-protected, jet-proof] |
| Mech. impact protection code | IK08 [5 J vandal-protected] |

Initial Performance (IEC Compliant)

| | |
|-------------------------------------|----------|
| Initial luminous flux (system flux) | 4570 lm |
| Luminous flux tolerance | +/-10% |
| Initial LED luminaire efficacy | 57 lm/W |
| Init. Corr. Color Temperature | 3000 K |
| Init. Color Rendering Index | 80 |
| Initial chromaticity | SDCM = 4 |
| Initial input power | 80 W |
| Power consumption tolerance | +/-10% |

Application Conditions

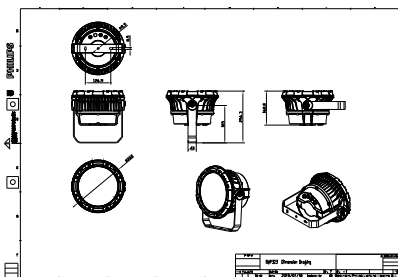
| | |
|---------------------------|---------------|
| Ambient temperature range | -40 to +50 °C |
| Maximum dim level | 1% |

Product Data

| | |
|---------------------------------|------------------------------|
| Full product code | 911401740592 |
| Order product name | BVP323 36LED 30K 220V 40 DMX |
| Order code | 911401740592 |
| Numerator - Quantity Per Pack | 1 |
| Numerator - Packs per outer box | 2 |
| Material Nr. (12NC) | 911401740592 |
| Net Weight (Piece) | 5.199 kg |



Dimensional drawing



BVP321/322/323/324

UniFlood C

