



UniFlood C

BVP323 24LED 40K 220V 40

UniFlood C - 3725 lm - 50 W - 4000 K

UniFlood C is a circular shaped, exterior-rated and cost-effective architectural LED floodlight that is designed for façade, landscape and outdoor flood lighting applications. The robust mechanical design and high-efficiency optical design make it ideal for illuminating multi-story exterior facades, bridges, landmarks and monuments. Available in white, monochromatic colors, RGB, RGBW and tunable white. Six different spread lenses ranging from narrow spot to wide flood and DMX512/RDM control option available to give architects and designers the freedom to explore a wide range of concepts and design with no limitations.

Warnings and Safety

- For outdoor use only

Product data

General Information		Operating and Electrical	
Light source color	Neutral white	CE mark	CE mark
Light source replaceable	No	Constant light output	No
Number of gear units	1 unit	Number of products on MCB of 16 A type B	4
Driver/power unit/transformer	Power supply unit	Light source engine type	LED
Driver included	Yes	Serviceability class	Class B, luminaire is equipped with some serviceable parts (when applicable): driver, control units, surge protection device, front cover and mechanical parts
Optical cover/lens type	Flat glass		
Luminaire light beam spread	40°		
Control interface	-		
Connection	Flying leads/wires	Input Voltage	220 to 240 V
Cable	Cable 0.5 m without plug 3-pole	Input Frequency	50 to 60 Hz
Protection class IEC	Safety class I	Inrush current	60 A
Flammability mark	For mounting on normally flammable surfaces	Inrush time	0.65 ms

UniFlood C

Power Factor (Min)	0.9
Controls and Dimming	
Dimmable	No
Mechanical and Housing	
Housing Material	Aluminum die cast
Optic material	Polymethyl methacrylate
Optical cover/lens material	Tempered glass
Fixation material	Steel
Mounting device	Mounting bracket adjustable
Optical cover/lens shape	Flat
Optical cover/lens finish	Clear
Overall length	315 mm
Overall width	262 mm
Overall height	169 mm
Overall diameter	262 mm
Color	Dark gray
Approval and Application	
Ingress protection code	IP66 [Dust penetration-protected, jet-proof]
Mech. impact protection code	IK08 [5 J vandal-protected]

Initial Performance (IEC Compliant)	
Initial luminous flux (system flux)	3725 lm
Luminous flux tolerance	+/-10%
Initial LED luminaire efficacy	75 lm/W
Init. Corr. Color Temperature	4000 K
Init. Color Rendering Index	80
Initial chromaticity	SDCM = 4
Initial input power	50 W
Power consumption tolerance	+/-10%

Application Conditions

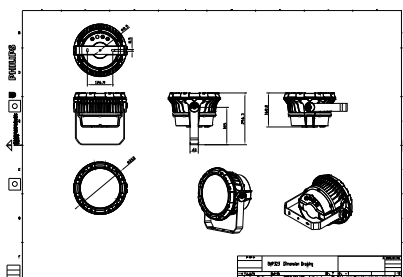
Ambient temperature range	-40 to +50 °C
---------------------------	---------------

Product Data

Full product code	911401740342
Order product name	BVP323 24LED 40K 220V 40
Order code	911401740342
Numerator - Quantity Per Pack	1
Numerator - Packs per outer box	2
Material Nr. (12NC)	911401740342
Net Weight (Piece)	5.199 kg



Dimensional drawing



BVP321/322/323/324

