



UniFlood C

BVP322 18LED RGB 220V 40 DMX

UniFlood C - 1345 lm - 36 W - - K

UniFlood C is a circular shaped, exterior-rated and cost-effective architectural LED floodlight that is designed for façade, landscape and outdoor flood lighting applications. The robust mechanical design and high-efficiency optical design make it ideal for illuminating multi-story exterior facades, bridges, landmarks and monuments. Available in white, monochromatic colors, RGB, RGBW and tunable white. Six different spread lenses ranging from narrow spot to wide flood and DMX512/RDM control option available to give architects and designers the freedom to explore a wide range of concepts and design with no limitations.

Warnings and Safety

- For outdoor use only

Product data

General Information		Flammability mark	
Light source color	Red, green and blue	CE mark	For mounting on normally flammable surfaces
Light source replaceable	No	Constant light output	No
Number of gear units	1 unit	Number of products on MCB of 16 A type B	6
Driver/power unit/transformer	Power supply unit with DMX interface	Light source engine type	LED
Driver included	Yes	Serviceability class	Class B, luminaire is equipped with some serviceable parts (when applicable): driver, control units, surge protection device, front cover and mechanical parts
Optical cover/lens type	Flat glass	Operating and Electrical	
Luminaire light beam spread	40°	Input Voltage	220 to 240 V
Control interface	Dynamic DMX/RDM	Input Frequency	50 to 60 Hz
Connection	Flying leads/wires and 2 Push-in connector 4-pole		
Cable	Cable 0.5 m without plug 3-pole and 2 Cables 0.5 m with connector 4-pole		
Protection class IEC	Safety class I		

UniFlood C

Inrush current	40 A
Inrush time	0.45 ms
Power Factor (Min)	0.9

Controls and Dimming

Dimmable	Yes
----------	-----

Mechanical and Housing

Housing Material	Aluminum die cast
Optic material	Polymethyl methacrylate
Optical cover/lens material	Tempered glass
Fixation material	Steel
Mounting device	Mounting bracket adjustable
Optical cover/lens shape	Flat
Optical cover/lens finish	Clear
Overall length	258 mm
Overall width	210 mm
Overall height	157 mm
Overall diameter	210 mm
Color	Dark gray

Approval and Application

Ingress protection code	IP66 [Dust penetration-protected, jet-proof]
Mech. impact protection code	IK08 [5 J vandal-protected]

Initial Performance (IEC Compliant)

Initial luminous flux (system flux)	1345 lm
Luminous flux tolerance	+/-10%
Initial LED luminaire efficacy	37 lm/W
Init. Corr. Color Temperature	- K
Init. Color Rendering Index	-
Initial input power	36 W
Power consumption tolerance	+/-10%

Application Conditions

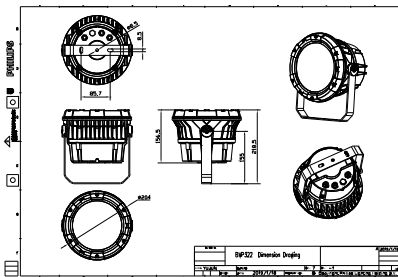
Ambient temperature range	-40 to +50 °C
Maximum dim level	1%

Product Data

Full product code	911401740082
Order product name	BVP322 18LED RGB 220V 40 DMX
Order code	911401740082
Numerator - Quantity Per Pack	1
Numerator - Packs per outer box	2
Material Nr. (12NC)	911401740082
Net Weight (Piece)	4.099 kg



Dimensional drawing



BVP321/322/323/324

UniFlood C

