



# OptiVision LED gen3.5 –Smart area and recreational sports lighting

## OptiVision LED gen3.5

The Philips OptiVision LED gen3.5 floodlighting system provides a complete lighting solution for the simplest through to the most complex area and recreational sports lighting applications. The high-efficiency floodlight comes with a single piece die cast housing, hosting 2 and 3 LED engines respectively, which also function with an external driver box – separate for use at a distance from the floodlight (BV), or pre-fixed onto the mounting bracket of the floodlight (HGB) for ease of installation and lower initial cost. It meets the highest performance standards, provides outstanding light, quality, uniformity and ensures safety and visual comfort.

### Benefits

- The wide range of optics ensure maximum optical efficiency and enables highly precise light distribution with minimum spill light
- 0-tilt allows for low sCx value for projects that want to re-use installed pole structures to minimize required investment. 0 tilt option further increases comfort and minimizes complaints on light trespass from residents
- When combined with Philips controls or Interact Sports lighting management system, the floodlight enables additional energy savings (up to 65%) in different area lighting applications
- Equipped with Service tag, a QR-based identification system that makes each luminaire uniquely identifiable and provides maintenance, installation and spare part information

# OptiVision LED gen3.5

## Features

- Single piece pressure die cast housing, with a protection level of IP66 against dust and water
- Wide range of ambient temperature tolerance making it suitable for a variety of sports and area lighting applications
- Option to add additional accessories to have the best in class spill light, 0 tilt, glare and up-light control
- Single High-power driver with IP66 protection pressure die cast housing and 10kV surge protection
- Programmable DALI Driver making it suitable to connect to lighting management systems like Interact Sports

## Application

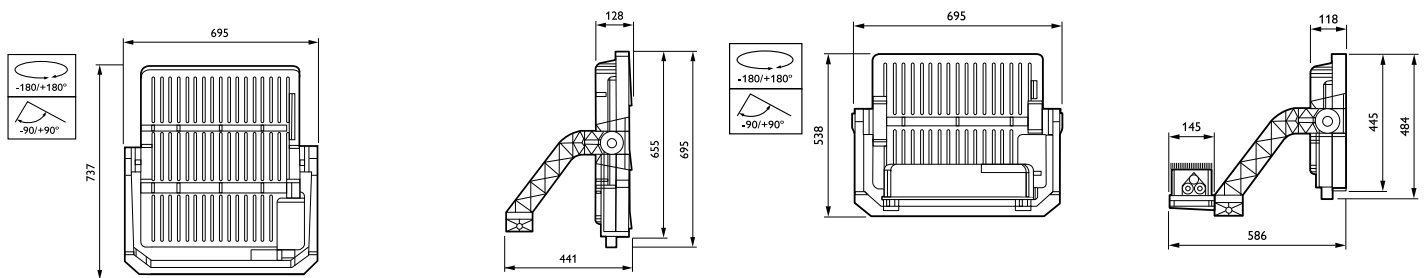
- Logistics areas (Ports)
- Apron lighting (Airports), Parking and Industrial areas
- Recreational sports lighting applications (Football, Hockey, Basketball, Golf, Tennis, etc)

## Versions



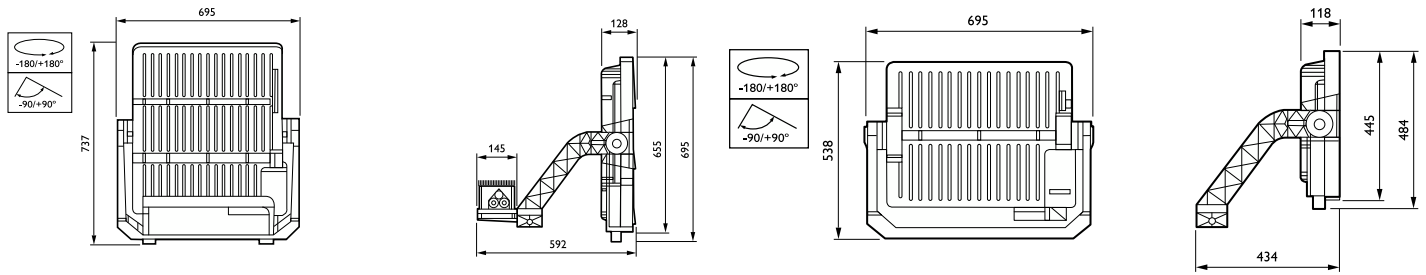
OptiVision LED gen3 5 BVP518 HGB PP

## Dimensional drawing



# OptiVision LED gen3.5

## Dimensional drawing



### General Information

CE mark	CE mark
Driver included	Yes
Flammability mark	-
Number of gear units	1 unit
Service tag	Yes

### Light Technical

Luminaire light beam spread	5° - 13° x 120°
Optical cover/lens type	Polycarbonate bowl/cover clear
Color rendering index (CRI)	>70
Optic type outdoor	Asymmetrical
Standard tilt angle side entry	-
Standard tilt angle posttop	0°
Upward light output ratio	0

### Controls and Dimming

Dimmable	Yes
----------	-----

### Mechanical and Housing

Housing Color	Aluminum
---------------	----------

### Approval and Application

Mech. impact protection code	IK08
Ingress protection code	IP66
Surge Protection (Common/Differential)	Surge protection level until 10 kV differential mode

### General Information

Order Code	Full Product Name	Lamp family code	Product family code
912300060429	BVP518 1720/740 BV A35-WB D9 T35 OUT	LED1720	BVP518
912300060430	BVP518 1720/740 BV A35-WB D9 T35 OUT LO	LED1720	BVP518
912300060432	BVP518 1720/757 BV A35-WB D9 T35 OUT	LED1720	BVP518
912300060434	BVP518 1650/730 BV A35-WB D9 T35 OUT LO	LED1650	BVP518
912300060436	BVP518 1720/740 BV A65-WB D9 T35 OUT	LED1720	BVP518
912300060431	BVP518 1720/740 HGB A35-WB D9 T35 OUT	LED1720	BVP518
912300060433	BVP518 1720/757 HGB A35-WB D9 T35 OUT	LED1720	BVP518
912300060440	BVP528 2590/740 HGB A35-WB D9 T35 OUT	LED2600	BVP528
912300060442	BVP528 2590/757 HGB A35-WB D9 T35 OUT	LED2600	BVP528
912300060437	BVP528 2590/740 BV A35-NB D9 T35 OUT LO	LED2600	BVP528
912300060438	BVP528 2590/740 BV A35-WB D9 T35 OUT	LED2600	BVP528
912300060439	BVP528 2590/740 BV A35-WB D9 T35 OUT LO	LED2600	BVP528
912300060441	BVP528 2590/757 BV A35-WB D9 T35 OUT	LED2600	BVP528
912300060443	BVP528 2470/730 BV A35-NB D9 T35 OUT LO	LED2500	BVP528
912300060444	BVP528 2470/730 BV A35-WB D9 T35 OUT LO	LED2500	BVP528
912300060445	BVP528 2590/740 BV A65-WB D9 T35 OUT	LED2600	BVP528

## Light Technical

Order Code	Full Product Name	Light source	Correlated Color	
		color	Temperature (Nom)	Luminous Flux
912300060429	BVP518 1720/740 BV A35-WB D9 T35 OUT	740 neutral	4000 K	149,640
		white		lumen

Order Code	Full Product Name	Light source	Correlated Color	
		color	Temperature (Nom)	Luminous Flux
912300060430	BVP518 1720/740 BV A35-WB D9 T35 OUT LO	740 neutral	4000 K	120,400
		white		lumen

## OptiVision LED gen3.5

Order Code	Full Product Name	Light	Correlated Color	
		source color	Temperature (Nom)	Luminous Flux
912300060432	BVP518 1720/757 BV	757 cool	5700 K	149,640
	A35-WB D9 T35 OUT	white		lumen
912300060434	BVP518 1650/730 BV	730 warm	3000 K	113,850
	A35-WB D9 T35 OUT	white		lumen
	LO			
912300060436	BVP518 1720/740 BV	740 neutral	4000 K	149,640
	A65-WB D9 T35 OUT	white		lumen
912300060431	BVP518 1720/740 HGB	740 neutral	4000 K	149,640
	A35-WB D9 T35 OUT	white		lumen
912300060433	BVP518 1720/757 HGB	757 cool	5700 K	149,640
	A35-WB D9 T35 OUT	white		lumen
912300060440	BVP528 2590/740 HGB	740 neutral	4000 K	225,330
	A35-WB D9 T35 OUT	white		lumen
912300060442	BVP528 2590/757 HGB	757 cool	5700 K	225,330
	A35-WB D9 T35 OUT	white		lumen
912300060437	BVP528 2590/740 BV	740 neutral	4000 K	181,300
	A35-NB D9 T35 OUT LO	white		lumen

Order Code	Full Product Name	Light	Correlated Color	
		source color	Temperature (Nom)	Luminous Flux
912300060438	BVP528 2590/740 BV	740 neutral	4000 K	225,330
	A35-WB D9 T35 OUT	white		lumen
912300060439	BVP528 2590/740 BV	740 neutral	4000 K	181,300
	A35-WB D9 T35 OUT	white		lumen
	LO			
912300060441	BVP528 2590/757 BV	757 cool	5700 K	225,330
	A35-WB D9 T35 OUT	white		lumen
912300060443	BVP528 2470/730 BV	730 warm	3000 K	170,430
	A35-NB D9 T35 OUT LO	white		lumen
912300060444	BVP528 2470/730 BV	730 warm	3000 K	170,430
	A35-WB D9 T35 OUT	white		lumen
	LO			
912300060445	BVP528 2590/740 BV	740 neutral	4000 K	225,330
	A65-WB D9 T35 OUT	white		lumen

### Operating and Electrical

Order Code	Full Product Name	Power Consumption
912300060429	BVP518 1720/740 BV A35-WB D9 T35 OUT	1,000 W
912300060430	BVP518 1720/740 BV A35-WB D9 T35 OUT LO	1,000 W
912300060432	BVP518 1720/757 BV A35-WB D9 T35 OUT	1,000 W
912300060434	BVP518 1650/730 BV A35-WB D9 T35 OUT LO	1,000 W
912300060436	BVP518 1720/740 BV A65-WB D9 T35 OUT	1,000 W
912300060431	BVP518 1720/740 HGB A35-WB D9 T35 OUT	1,000 W
912300060433	BVP518 1720/757 HGB A35-WB D9 T35 OUT	1,000 W
912300060440	BVP528 2590/740 HGB A35-WB D9 T35 OUT	1,500 W

Order Code	Full Product Name	Power Consumption
912300060442	BVP528 2590/757 HGB A35-WB D9 T35 OUT	1,500 W
912300060437	BVP528 2590/740 BV A35-NB D9 T35 OUT LO	1,500 W
912300060438	BVP528 2590/740 BV A35-WB D9 T35 OUT	1,500 W
912300060439	BVP528 2590/740 BV A35-WB D9 T35 OUT LO	1,500 W
912300060441	BVP528 2590/757 BV A35-WB D9 T35 OUT	1,500 W
912300060443	BVP528 2470/730 BV A35-NB D9 T35 OUT LO	1,500 W
912300060444	BVP528 2470/730 BV A35-WB D9 T35 OUT LO	1,500 W
912300060445	BVP528 2590/740 BV A65-WB D9 T35 OUT	1,500 W

