



Remote monitoring unit for solar street lighting

RMU

Philips Solar Remote Monitoring Units (RMU) is a breakthrough solution for Off- Grid solar street lighting. It records system operation data, which can be used for energy reporting, environment and sustainable report, system state-of-the health; RMU enables real-time remote control, updating dimming profile, remote programming and upgrading. The friendly user interface of software is easy for you to manage solar lights remotely.

Benefits

- Monitor health of critical components of the Solar lighting system
- Remotely control the solar street lights, individually or in groups
- Logs energy data for analysis of system performance
- Remotely optimize the dimming profile of street lights according to the changing solar irradiance in various seasons
- Make the solar street light system Smart city ready with data access through API's
- Real time alerts to minimize outages
- Easy installation through plug and play single cable connection

Features

- 128 bit AES encrypted communication
- Weather proof rugged construction
- Web based User interface, compatible with all major web explorers
- Multiple options to store Dimming profile in LCU or CCU
- Supports both individual and group controls
- Choice of 2G/3G/4G or Ethernet based back-haul connectivity
- Role based user access control mechanisms
- Configurable data read interval

RMU

Application

- Solar Street Lighting

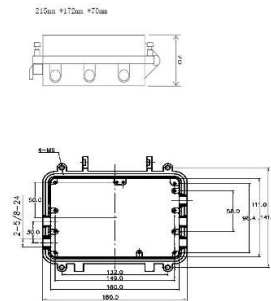
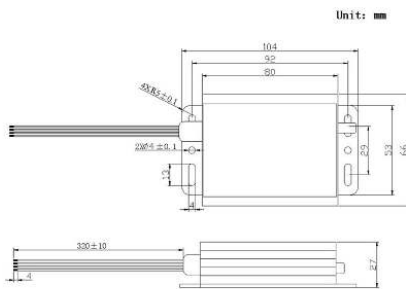
Versions



LCU

CCU

Dimensional drawing



RMU

Operating and Electrical

Cable connection kit Excluded

Temperature

Ambient temperature range -10 to +65 °C

Approval and Application

Ingress protection code IP65

Mechanical and Housing

Order Code	Full Product Name	Overall height	Overall length	Overall width	Order Code	Full Product Name	Overall height	Overall length	Overall width
911401892601	Solar RM LCU A128	25 mm	65 mm	85 mm	911401892701	Solar RM CCU A128	80 mm	170 mm	100 mm

