



# Solar Panels for Philips Solar Lighting.

## Solar Panel Sub System

A Range of Solar panels from 20 W to 325 W specially designed for Philips Solar Street lighting, Flood lighting and Solar Indoor Systems

### Benefits

- Robust quality managed by Philips quality discipline, supplied by world class manufacturers
- Customization available
- Plug and play design for easy connection and installation
- TUV certification

### Features

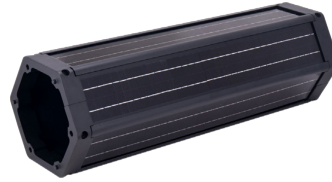
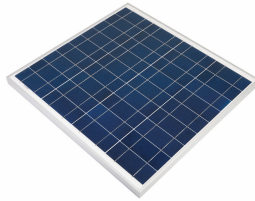
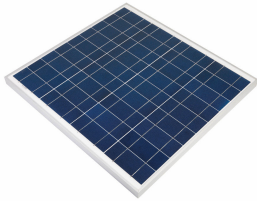
- Connectors with excellent aging resistance and UV endurance, for harsh environment operations.
- Environmentally sealed to IP67
- Ambient temperature range : -40~+85。 C
- Simple crimp-and-poke application
- Tactile and audible mating feedback

### Application

- Solar Street Lighting
- Solar Flood Lighting
- Solar Indoor Systems

# Solar Panel Sub System

## Versions



Solar Panel

90W 18V Panel subsystem

Cylindrical Vertical Solar Panel

### Application Conditions

**Ambient temperature range** -40 to +85 °C

### Operating and Electrical

**Cable connection kit** Included

## Approval and Application

Order Code	Full Product Name	Ingress protection code
911401803102	60W 17V Panel subsystem Vmpp 17.9V	IP67
911401803202	55W 17V Panel subsystem Vmpp 18.39V	IP67
911401803302	75W 17V Panel subsystem Vmpp 17.89V	IP67
911401803402	30W 17V Panel subsystem Vmpp 17.9V	IP67
911401803502	125W 17V Panel subsystem Vmpp 18.7V	IP67
911401803602	115W 17V Panel subsystem Vmpp 18V	IP67
911401803702	100W 17V Panel subsystem Vmpp 18.22V	IP67
911401803802	105W 17V Panel subsystem Vmpp 18V	IP67
911401803902	155W 17V Panel subsystem Vmpp 18.93V	IP67
911401804002	130W 19V Panel subsystem Vmpp 20.16V	IP67
911401804102	200W 36V Panel subsystem Vmpp 38.99V	IP67

Order Code	Full Product Name	Ingress protection code
911401804402	315W 36V Panel subsystem Vmpp 37.37V	IP67
911401804502	310W 36V Panel subsystem Vmpp 37.13V	IP67
911401815002	90W 18V Panel subsystem	IP67
911401815602	325W 36V Panel subsystem	IP67
911401893501	200W 36V Panel subsystem Vmpp 38.99V	IP67
911401821702	100Wp Vertical Panel Subsystem Vmpp 18V	IP55
911401821802	100Wp Vertical Panel Subsystem Vmpp 36V	IP55
911401821902	140Wp Vertical Panel Subsystem Vmpp 18V	IP55
911401822002	140Wp Vertical Panel Subsystem Vmpp 36V	IP55
911401822102	190Wp Vertical Panel Subsystem Vmpp 18V	IP55
911401822202	190Wp Vertical Panel Subsystem Vmpp 36V	IP55

## Operating and Electrical

Order Code	Full Product Name	Panel peak wattage	Panel type	Panel voltage
911401803102	60W 17V Panel subsystem Vmpp 17.9V	60 W	Poly crystalline	17 V
911401803202	55W 17V Panel subsystem Vmpp 18.39V	55 W	Poly crystalline	17 V
911401803302	75W 17V Panel subsystem Vmpp 17.89V	75 W	Poly crystalline	17 V
911401803402	30W 17V Panel subsystem Vmpp 17.9V	30 W	Poly crystalline	17 V
911401803502	125W 17V Panel subsystem Vmpp 18.7V	125 W	Poly crystalline	17 V
911401803602	115W 17V Panel subsystem Vmpp 18V	115 W	Poly crystalline	17 V

Order Code	Full Product Name	Panel peak wattage	Panel type	Panel voltage
911401803702	100W 17V Panel subsystem Vmpp 18.22V	100 W	Poly crystalline	17 V
911401803802	105W 17V Panel subsystem Vmpp 18V	105 W	Poly crystalline	17 V
911401803902	155W 17V Panel subsystem Vmpp 18.93V	155 W	Poly crystalline	17 V
911401804002	130W 19V Panel subsystem Vmpp 20.16V	130 W	Poly crystalline	19 V
911401804102	200W 36V Panel subsystem Vmpp 38.99V	200 W	Poly crystalline	36 V
911401804402	315W 36V Panel subsystem Vmpp 37.37V	315 W	Poly crystalline	36 V

## Solar Panel Sub System

Order Code	Full Product Name	Panel peak wattage	Panel type	Panel voltage
911401804502	310W 36V Panel subsystem Vmpp 37.13V	310 W	Poly crystalline	36 V
911401815002	90W 18V Panel subsystem	90 W	Poly crystalline	18 V
911401815602	325W 36V Panel subsystem	325 W	Poly crystalline	36 V
911401893501	200W 36V Panel subsystem Vmpp 38.99V	200 W	Poly crystalline	36 V
911401821702	100Wp Vertical Panel Subsystem Vmpp 18V	100 W	Mono crystalline	18 V

Order Code	Full Product Name	Panel peak wattage	Panel type	Panel voltage
911401821802	100Wp Vertical Panel Subsystem Vmpp 36V	100 W	Mono crystalline	36 V
911401821902	140Wp Vertical Panel Subsystem Vmpp 18V	140 W	Mono crystalline	18 V
911401822002	140Wp Vertical Panel Subsystem Vmpp 36V	140 W	Mono crystalline	36 V
911401822102	190Wp Vertical Panel Subsystem Vmpp 18V	190 W	Mono crystalline	18 V
911401822202	190Wp Vertical Panel Subsystem Vmpp 36V	190 W	Mono crystalline	36 V

## Mechanical and Housing

Order Code	Full Product Name	Overall height	Overall length	Overall width
911401803102	60W 17V Panel subsystem Vmpp 17.9V	35 mm	639 mm	666 mm
911401803202	55W 17V Panel subsystem Vmpp 18.39V	35 mm	558 mm	666 mm
911401803302	75W 17V Panel subsystem Vmpp 17.89V	35 mm	774 mm	666 mm
911401803402	30W 17V Panel subsystem Vmpp 17.9V	35 mm	360 mm	666 mm
911401803502	125W 17V Panel subsystem Vmpp 18.7V	35 mm	1195 mm	666 mm
911401803602	115W 17V Panel subsystem Vmpp 18V	35 mm	1125 mm	666 mm
911401803702	100W 17V Panel subsystem Vmpp 18.22V	35 mm	990 mm	666 mm
911401803802	105W 17V Panel subsystem Vmpp 18V	35 mm	990 mm	666 mm
911401803902	155W 17V Panel subsystem Vmpp 18.93V	35 mm	1476 mm	666 mm
911401804002	130W 19V Panel subsystem Vmpp 20.16V	35 mm	1244 mm	666 mm
911401804102	200W 36V Panel subsystem Vmpp 38.99V	40 mm	1318 mm	992 mm

Order Code	Full Product Name	Overall height	Overall length	Overall width
911401804402	315W 36V Panel subsystem Vmpp 37.37V	40 mm	1956 mm	992 mm
911401804502	310W 36V Panel subsystem Vmpp 37.13V	40 mm	1956 mm	992 mm
911401815002	90W 18V Panel subsystem	35 mm	779 mm	665 mm
911401815602	325W 36V Panel subsystem	35 mm	1992 mm	992 mm
911401893501	200W 36V Panel subsystem Vmpp 38.99V	40 mm	1318 mm	992 mm
911401821702	100Wp Vertical Panel Subsystem Vmpp 18V	1160 mm	228 mm	220 mm
911401821802	100Wp Vertical Panel Subsystem Vmpp 36V	1160 mm	228 mm	220 mm
911401821902	140Wp Vertical Panel Subsystem Vmpp 18V	1560 mm	228 mm	220 mm
911401822002	140Wp Vertical Panel Subsystem Vmpp 36V	1560 mm	228 mm	220 mm
911401822102	190Wp Vertical Panel Subsystem Vmpp 18V	2000 mm	228 mm	220 mm
911401822202	190Wp Vertical Panel Subsystem Vmpp 36V	2000 mm	228 mm	220 mm

