



Your first step into connected lighting

MasterConnect T8

Introducing MasterConnect LED lamps - smart retrofit LED lamps that give you an easy and seamless way to upgrade to connected lighting. Simply set up with an intuitive app, MasterConnect LED lamps can be programmed to maximize energy savings, while providing wireless and automated light for your comfort and convenience. What's more, it is fully scalable and upgradable. If you want to enjoy further benefits such as remote control or management dashboard, you can simply keep the currently installed lamps and add a gateway to experience all the advantages of a cloud-based system. There's no better way to take lighting solutions to the next level.

Benefits

- Easy to install and set up
- Enhanced energy saving and convenience thanks to advanced lighting controls
- Scalable and upgradable to cloud-based solution

Features

- Quick upgrade to smart lighting on verified HF ballasts or direct mains (UL Type A and Type B)
- Product lifetime up to 70,000hrs
- Easy to set up and control – with intuitive app
- Interact ready
- Reliable and secure wireless technology

Application

- Office, education, retail and healthcare
- Parking, industry and warehouse

MasterConnect T8

Versions

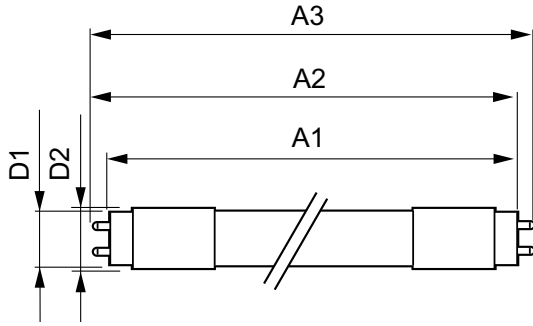


Medium Bi-Pin Fluorescent Tube,
double-ended



Medium Bi-Pin Fluorescent Tube,
double-ended

Dimensional drawing



Product	D1	D2	A1	A2	A3
14T8/48-835/IF20/MC IA 10/1	25.7 mm	26.3 mm	1198 mm	1205 mm	1212 mm
14T8/48-840/IF21/MC IA 10/1	25.7 mm	26.3 mm	1198 mm	1205 mm	1212 mm
14T8/48-850/IF21/MC IA 10/1	25.7 mm	26.3 mm	1198 mm	1205 mm	1212 mm
14.5T8/48-835/MF20/MC IA 10/1	25.7 mm	28 mm	1198 mm	1205 mm	1212 mm
14.5T8/48-840/MF21/MC IA 10/1	25.7 mm	28 mm	1198 mm	1205 mm	1212 mm
14.5T8/48-850/MF21/MC IA 10/1	25.7 mm	28 mm	1198 mm	1205 mm	1212 mm

Approval and Application

Energy Consumption kWh/1000 h - kWh

Controls and Dimming

Dimmable Wireless Dim

General Information

Nominal Lifetime (Nom) 70000 h

Switching Cycle 50000X

Light Technical

Beam Angle (Nom) 160 °

Color Rendering Index (Nom) 82

Llmf At End Of Nominal Lifetime (Nom) 70 %

Mechanical and Housing

Bulb Shape Tube, double-ended

Temperature

T-Ambient (Max) 45 °C

T-Ambient (Min) -20 °C

T-Storage (Max) 65 °C

T-Storage (Min) -40 °C

Operating and Electrical

Order Code	Full Product Name	Input Frequency (Nom)	Voltage (Nom)	Power (Rated) (Nom)	Starting Time (Nom)
929002051804	14T8/48-835/IF20/MC IA 10/1	28K to 100K Hz	100-380 V	14 W	0.5 s
929002051904	14T8/48-840/IF21/MC IA 10/1	28K to 100K Hz	100-380 V	14 W	0.5 s
929002052004	14T8/48-850/IF21/MC IA 10/1	28K to 100K Hz	100-380 V	14 W	0.5 s
929002456604	14.5T8/48-835/MF20/MC IA 10/1	50 to 60 Hz	120-277 V	14.5 W	1 s
929002456704	14.5T8/48-840/MF21/MC IA 10/1	50 to 60 Hz	120-277 V	14.5 W	1 s
929002456804	14.5T8/48-850/MF21/MC IA 10/1	50 to 60 Hz	120-277 V	14.5 W	1 s

General Information

Order Code	Full Product Name	Cap-Base
929002051804	14T8/48-835/IF20/MC IA 10/1	G13
929002051904	14T8/48-840/IF21/MC IA 10/1	G13
929002052004	14T8/48-850/IF21/MC IA 10/1	G13

Order Code	Full Product Name	Cap-Base
929002456604	14.5T8/48-835/MF20/MC IA 10/1	G13 ROT (Rotating)
929002456704	14.5T8/48-840/MF21/MC IA 10/1	G13 ROT (Rotating)
929002456804	14.5T8/48-850/MF21/MC IA 10/1	G13 ROT (Rotating)

MasterConnect T8

Light Technical

Order Code	Full Product Name	Correlated Color		
		Color Code	Temperature (Nom)	Luminous Flux (Nom)
929002051804	14T8/48-835/IF20/MC IA 10/1	835	3500 K	2000 lm
929002051904	14T8/48-840/IF21/MC IA 10/1	840	4000 K	2100 lm
929002052004	14T8/48-850/IF21/MC IA 10/1	850	5000 K	2100 lm

Order Code	Full Product Name	Correlated Color		
		Color Code	Temperature (Nom)	Luminous Flux (Nom)
929002456604	14.5T8/48-835/MF20/MC IA 10/1	835	3500 K	2000 lm
929002456704	14.5T8/48-840/MF21/MC IA 10/1	840	4000 K	2100 lm
929002456804	14.5T8/48-850/MF21/MC IA 10/1	850	5000 K	2100 lm

Temperature

Order Code	Full Product Name	T-Case Maximum (Nom)
929002051804	14T8/48-835/IF20/MC IA 10/1	40 °C
929002051904	14T8/48-840/IF21/MC IA 10/1	40 °C
929002052004	14T8/48-850/IF21/MC IA 10/1	40 °C
929002456604	14.5T8/48-835/MF20/MC IA 10/1	45 °C
929002456704	14.5T8/48-840/MF21/MC IA 10/1	45 °C
929002456804	14.5T8/48-850/MF21/MC IA 10/1	45 °C

