



Exquisite, stylish yet classic and versatile urban lighting

UNIUrban

UNIUrban is ideal for the urban lighting across the sidewalks, parks, gardens, residential areas, shopping center plazas. Its exquisite, stylish yet classic design is not only suitable for modern cities but also for historical architecture.

Benefits

- Exquisite, stylish yet classic design to beautify your space
- State-of-the-art LEDs and drivers ensure better lighting performance and reliability
- Comfort and safety for urban
- Future-oriented

Features

- 5 even more look-and-feels
- 3 options of wattage packages– 33W/ 65W / 100W
- 3000K/4000K CCT , 100+lm/w for energy-saving
- 3 options for installation - Side-entry, Post-top and Suspension
- 3 options for lighting distribution - Symmetrical / Asymmetrical / Omni
- IP65 / IK08 , professional design to ensure reliability
- 50K hrs. lifetime with 3 yrs. warranty
- Various mounting installation

Application

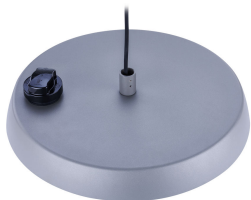
- Sidewalks
- Parks, gardens
- Residential areas
- Shopping center plazas

UNIUrban

Versions



uniurban



uniurban



uniurban

Accessories



BSS461

Ordercode 911401727802



Chess

Ordercode 911401727812,
911401727842



Dome

Ordercode 911401727822,
911401727832

Approval and Application

Mech. impact protection code IK08

Controls and Dimming

Dimmable Yes

General Information

CE mark CE mark

Light source color 740 neutral white

Driver included Yes

Flammability mark For mounting on normally flammable surfaces

Initial Performance (IEC Compliant)

Init. Corr. Color Temperature 4000 K

Init. Color Rendering Index >70

Mechanical and Housing

Color Aluminum and gray

General Information

Order Code	Full Product Name	Optical cover/lens type
911401756012	BDP461 LED100 NW 230V SR TS 7P	Acrylate micro-lens optic
911401756042	BDP461 LED100 NW 230V PSD TS SR	Acrylate micro-lens optic
911401756072	BDP461 LED100 NW 230V SR TS 7P II	Acrylate micro-lens optic
911401756102	BDP461 LED100 NW 230V PSD TS SR II	Acrylate micro-lens optic
911401767062	BDP461 LED100 NW 230V PSC TS 7P	Acrylate micro-lens optic
911401756022	BSP461 LED120 NW 230V SR TA 7P	Acrylate micro-lens optic
911401756032	BSS461 LED120 NW 230V SR CLASSIC 7P	-
911401756052	BSP461 LED120 NW 230V PSD TA SR	Acrylate micro-lens optic
911401756062	BSS461 LED120 NW 230V PSD CLASSIC SR	-
911401756082	BSP461 LED120 NW 230V SR TA 7P II	Acrylate micro-lens optic
911401756092	BSS461 LED120 NW 230V SR CLASSIC 7P II	-
911401756112	BSP461 LED120 NW 230V PSD TA SR II	Acrylate micro-lens optic
911401756122	BSS461 LED120 NW 230V PSD CLASSIC SR II	-
911401759262	BGP461 LED78 NW 230V SR TS 7P Spg77	Acrylate micro-lens optic
911401759272	BGP461 LED78 NW 230V SR TS 7P II Spg77	Acrylate micro-lens optic
911401767072	BGP461 LED120 NW 230V PSC TA 7P Spg77	Acrylate micro-lens optic

Initial Performance (IEC Compliant)

Order Code	Full Product Name	Initial luminous flux
911401756012	BDP461 LED100 NW 230V SR TS 7P	10000 lm
911401756042	BDP461 LED100 NW 230V PSD TS SR	10000 lm
911401756072	BDP461 LED100 NW 230V SR TS 7P II	10000 lm
911401756102	BDP461 LED100 NW 230V PSD TS SR II	10000 lm
911401767062	BDP461 LED100 NW 230V PSC TS 7P	10000 lm
911401756022	BSP461 LED120 NW 230V SR TA 7P	12000 lm
911401756032	BSS461 LED120 NW 230V SR CLASSIC 7P	12000 lm
911401756052	BSP461 LED120 NW 230V PSD TA SR	12000 lm

Order Code	Full Product Name	Initial luminous flux
911401756062	BSS461 LED120 NW 230V PSD CLASSIC SR	12000 lm
911401756082	BSP461 LED120 NW 230V SR TA 7P II	12000 lm
911401756092	BSS461 LED120 NW 230V SR CLASSIC 7P II	12000 lm
911401756112	BSP461 LED120 NW 230V PSD TA SR II	12000 lm
911401756122	BSS461 LED120 NW 230V PSD CLASSIC SR II	12000 lm
911401759262	BGP461 LED78 NW 230V SR TS 7P Spg77	7800 lm
911401759272	BGP461 LED78 NW 230V SR TS 7P II Spg77	7800 lm
911401767072	BGP461 LED120 NW 230V PSC TA 7P Spg77	12000 lm

