



Extending the home feel onto the street

TownTune Asymmetric Lyre

As a luminaire family prepared for existing and scalable urban spaces, TownTune offers all the recent lighting innovations in terms of performance, quality of light and connectivity. The Philips TownTune family consists of three members: a central post top, an asymmetric spigot version and a version using an extending lyre post top bracket. Each of these three can be customized with a choice of different shapes for housing and an optional of decorative ring which comes in two colors. By having these options available you can create your very own lighting signature and give distinctive identity to districts and cities. The luminaire family is also equipped with the QR code-based Philips Service tag, which supports installation and maintenance work and enables you to create your digital library of lighting assets and spare parts. TownTune also makes use of the Philips Ledgine optimized lighting platform ensuring that you always have the right amount and direction of light on your street. Furthermore, thanks to being SR (System Ready), TownTune is also future-proof and is ready to be paired with both standalone and advanced control and lighting software applications such as Interact City.

TownTune Asymmetric Lyre

Benefits

- Delivers visual comfort, and comfortable lighting experiences in urban spaces through its dedicatedly designed bowl
- Simple, pure design making it possible to integrate it into various urban environments and the option for customization through a wide range of accessories, lets cities create a unique light signature, which can also become part of the urban furniture in daytime
- Wide application coverage and offers great performance by using the latest Ledgine LED platform and providing access to a wide range of light distributions
- Ready to be paired with lighting control and software applications, by being equipped with the Philips SR (System Ready) socket
- Equipped with Service tag, a QR-based identification system that makes each luminaire uniquely identifiable and provides maintenance, installation and spare part information

Features

- Optimized Total Cost of Ownership and option of CLO (Constant Light Output)
- Excellent quality of light enabled by the Philips Ledgine optimized platform, and further optimization in L-Tune is also possible
- Choice of different shapes for housing (cone, dome), option of decorative ring and color (clear and golden)
- Ready to be paired with standalone lighting controls such as LumiStep, DynaDimmer, and LineSwitch and advanced system and software application such as Interact City
- Wide choice of lumen packages, ranging from 600 to 12,000 lumens
- Choice of color temperature: 3000 K (warm white) or 4000 K (neutral white)
- Long lifetime of 100,000 hours at minimum L80
- Suitable for new and retrofit installations
- IK08, IP66

Application

- Urban and residential areas
- City centers and main streets
- Cycle paths, footpaths and pedestrian crossings
- Car parks

Versions



BDP270, TownTune with lyre

TownTune Asymmetric Lyre

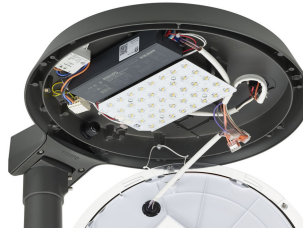
Product details



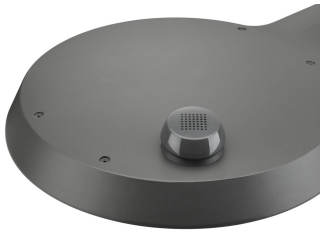
TownTune LYR BDP270



TownTune ASY BDP265



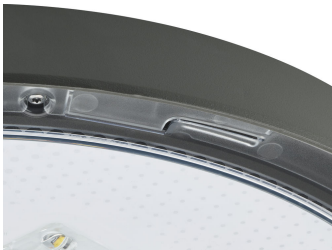
TownTune ASY BDP265



TownTune ASY BDP265



TownTune ASY BDP265



TownTune ASY DR BDP266



TownTune ASY BDP265

TownTune Asymmetric Lyre

Application Conditions	
Maximum dim level	10%
Approval and Application	
Mech. impact protection code	IK09
Surge Protection (Common/Differential)	Philips standard surge protection level
General Information	
CE mark	CE mark
Optical cover/lens type	Polycarbonate bowl/cover UV-resistant
Driver included	Yes
Flammability mark	For mounting on normally flammable surfaces
Light source replaceable	Yes
Number of gear units	1 unit
Product Family Code	BDP270
Service tag	Yes
Light Technical	
Standard tilt angle side entry	-
Standard tilt angle posttop	0°
Upward light output ratio	0
Mechanical and Housing	
Color	Dark gray

Order Code	Full Product Name	Driver failure rate at 5000 h
912300024206	BDP270 LED40-4S/830 DM50 CLO DDF3 62P	0.5 %
912300024210	BDP270 LED12-4S/740 DN10 CLO SRT SRB 62P	0.5 %
912300024462	BDP270 LED79-4S/830 II DS50 62P	0.5 %
912300024463	BDP270 LED50-4S/830 II DM10 62P	0.5 %
912300024874	BDP270 LED69-4S/740 PSDD II DM10 DGR DF2	-

Controls and Dimming

Order Code	Full Product Name	Dimmable
912300024206	BDP270 LED40-4S/830 DM50 CLO DDF3 62P	Yes
912300024210	BDP270 LED12-4S/740 DN10 CLO SRT SRB 62P	Yes
912300024462	BDP270 LED79-4S/830 II DS50 62P	No

Order Code	Full Product Name	Dimmable
912300024463	BDP270 LED50-4S/830 II DM10 62P	No
912300024874	BDP270 LED69-4S/740 PSDD II DM10 DGR DF2	Yes

General Information (1/2)

Order Code	Full Product Name	Luminaire light beam spread	Light source color	Lamp family code	Number of light sources
912300024206	BDP270 LED40-4S/830 DM50 CLO DDF3 62P	6° - 79° x 154°	830 warm white	LED40	-
912300024210	BDP270 LED12-4S/740 DN10 CLO SRT SRB 62P	12° - 59° x 158°	740 neutral white	LED12	-

Order Code	Full Product Name	Luminaire light beam spread	Light source color	Lamp family code	Number of light sources
912300024462	BDP270 LED79-4S/830 II DS50 62P	152° x 155°	830 warm white	LED79	-
912300024463	BDP270 LED50-4S/830 II DM10 62P	77° - 11° x 156°	830 warm white	LED50	-

TownTune Asymmetric Lyre

Order Code	Full Product Name	Luminaire light beam spread	Light source color	Lamp family code	Number of light sources
912300024874	BDP270 LED69-4S/740 PSDD II DM10 DGR DF2	77° - 11° x 156°	740 neutral white	LED69	30 pcs

General Information (2/2)

Order Code	Full Product Name	Optic type
912300024206	BDP270 LED40-4S/830 DM50 CLO DDF3 62P	Distribution medium 50
912300024210	BDP270 LED12-4S/740 DN10 CLO SRT SRB 62P	Distribution narrow 10
912300024462	BDP270 LED79-4S/830 II DS50 62P	Distribution symmetrical 50

Order Code	Full Product Name	Optic type
912300024463	BDP270 LED50-4S/830 II DM10 62P	Distribution medium 10
912300024874	BDP270 LED69-4S/740 PSDD II DM10 DGR DF2	Distribution medium 10

Initial Performance (IEC Compliant)

Order Code	Full Product Name	Init. Corr. Color Temperature	Init. Color Rendering Index	Initial luminous flux
912300024206	BDP270 LED40-4S/830 DM50 CLO DDF3 62P	3000 K	>80	2888 lm
912300024210	BDP270 LED12-4S/740 DN10 CLO SRT SRB 62P	4000 K	>70	936 lm
912300024462	BDP270 LED79-4S/830 II DS50 62P	3000 K	>80	5840 lm

Order Code	Full Product Name	Init. Corr. Color Temperature	Init. Color Rendering Index	Initial luminous flux
912300024463	BDP270 LED50-4S/830 II DM10 62P	3000 K	>80	3900 lm
912300024874	BDP270 LED69-4S/740 PSDD II DM10 DGR DF2	4000 K	>70	5530 lm

