



CoreLine Malaga LED: Simply Efficient

CoreLine Malaga LED

The CoreLine Malaga LED family consists of two sizes and uses a Philips standardized design LED engine as light source and a Philips Xitanium fixed output outdoor driver. Quality you can rely on. At the same time, the investment in a CoreLine Malaga LED luminaire is in many cases on the same level as an old SON-T luminaire including the first lamp. As the LED light engine in CoreLine Malaga LED will last the lifetime of the luminaire, just by saving the multiple lamp replacements needed with SON-T will already return the investment in it. Ease of installation is obtained through the extended gland feature; the luminaire does not need to be opened to connect the power cable. At the same time, the flat glass cover can be removed to allow access to the driver for maintenance if required. Adding up the functions and features truly make the choice for CoreLine Malaga LED an easy decision. As a member of the CoreLine family, Malaga LED is easy and quick available thru Philips Partners near you. CoreLine Malaga LED has been designed as efficient as possible, with the same performance as the SON-T 50, 70, 100 and 150W luminaires it replaces; provide the right amount of light in the right place. The medium beam (DM) optic delivers an efficient distribution onto the road. The combination results in interesting energy savings which reduce operating costs significantly. 50% energy reduction is realistically possible. Special versions with several options are available. As these are specials, and manufactured to order received only, these specials do have a longer delivery time. Options available are: Wide beam (DW) optic, Added surge protection device 10kV (SRG10), Marine Salt Protection (MSP) paint finish, Micro Mini Pro photocell 35 Lux, Build in (glass) fuse 6A3 meters external flying lead cable (H07RN-F). Not all these options can always be combined with each other. Please consult your Philips partner for details in case of interest or doubt.

CoreLine Malaga LED

Benefits

- Reliable quality: aluminum die-cast housing and tempered flat glass
- Maintainable, driver can be replaced
- IP65 and IK08 provide durable operation
- Ready to be paired with lighting control and software applications, by being equipped with the Philips SR (System Ready) socket
- Equipped with Service tag, a QR-based identification system that makes each luminaire uniquely identifiable and provides maintenance, installation and spare part information
- Easy return on investment. The investment in the luminaire, by saving lamp changes required for SON-T lamp luminaires, is already re-paid. On top, realistic energy savings of 50% reduce yearly running costs of the installation

Features

- Direct, one on one, replacement for SON-T lamps in Road, Street and Residential applications. Purpose, dedicated to LED, robust design including Philips standardized LED light platform and fixed output Philips Xitanium outdoor driver. Easy installation through the extended gland. No need to open the luminaire. 100Khrs lifetime L70 (or 75.000 hours L80) at Tq +25 °C).
- 5 years warranty

Application

- General outdoor; Road, Street and Residential areas.
- Industrial areas.
- Parking lots.
- Public transport such as bus or tramway stops.

Specifications

Ambient Temperature	-40 to +35 °C	Driver	Power supply unit (Power supply unit)
----------------------------	---------------	---------------	---------------------------------------

Versions

Coreline Malaga LED - LED
module 3700 lm

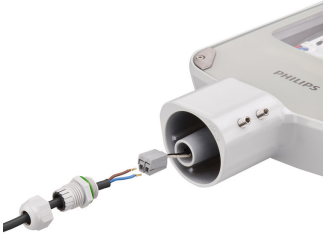


Coreline Malaga LED - LED
module 5500 lm



CoreLine Malaga LED

Product details



CoreLine_Malaga_LED-
BRP101_102-1DPP.TIF



CoreLine_Malaga_LED-
BRP101_102-2DPP.TIF



CoreLine_Malaga_LED-
BRP101_102-3DPP.TIF



CoreLine_Malaga_LED-
BRP101_102-4DPP.TIF



CoreLine_Malaga_LED-
BRP101_102-5DPP.TIF



CoreLine_Malaga_LED-BRP101-
DPP.TIF



CoreLine_Malaga_LED-BRP102-
DPP.TIF

CoreLine Malaga LED

Accessories

Post-top adaptor 60 mm

Ordercode 910925227912



Application Conditions

Maximum dim level Not applicable

Approval and Application

Mech. impact protection code IK08

Controls and Dimming

Dimmable No

General Information

Luminaire light beam spread -
 CE mark CE mark
 Light source color 740 neutral white
 Optical cover/lens type Flat glass
 Driver included Yes
 Flammability mark -
 Light source replaceable No
 Number of gear units 1 unit

Initial Performance (IEC Compliant)

Init. Corr. Color Temperature 4000 K
 Init. Color Rendering Index 70

Light Technical

Standard tilt angle side entry 0°
 Standard tilt angle posttop -
 Upward light output ratio 0

Mechanical and Housing

Color Gray

Approval and Application

Order Code	Full Product Name	Surge Protection (Common/Differential)
910925865338	BRP101 LED37/740 I DM	Luminaire surge protection level until 4 kV differential mode and 4 kV common mode
910925865339	BRP101 LED37/740 II DM	Luminaire surge protection level until 4 kV differential mode and 4 kV common mode
910925865552	BRP101 LED37/740 II DW SDM10	Luminaire surge protection level until 10 kV differential mode and 10 kV common mode
910925865553	BRP101 LED37/740 DM FU	Luminaire surge protection level until 4 kV differential mode and 4 kV common mode
910925867783	BRP101 LED37/740 II DM MSP	Luminaire surge protection level until 4 kV differential mode and 4 kV common mode
910925865340	BRP102 LED55/740 I DM	Luminaire surge protection level until 4 kV differential mode and 4 kV common mode
910925865341	BRP102 LED55/740 II DM	Luminaire surge protection level until 4 kV differential mode and 4 kV common mode
910925865342	BRP102 LED75/740 I DM	Luminaire surge protection level until 4 kV differential mode and 4 kV common mode
910925865343	BRP102 LED75/740 II DM	Luminaire surge protection level until 4 kV differential mode and 4 kV common mode
910925865344	BRP102 LED110/740 I DM	Luminaire surge protection level until 4 kV differential mode and 4 kV common mode
910925865345	BRP102 LED110/740 II DM	Luminaire surge protection level until 4 kV differential mode and 4 kV common mode
910925865554	BRP102 LED55/740 DW PZM-35	Luminaire surge protection level until 4 kV differential mode and 4 kV common mode
910925865555	BRP102 LED75/740 II DM SDM10	Luminaire surge protection level until 10 kV differential mode and 10 kV common mode
910925865556	BRP102 LED110/740 II DW FU	Luminaire surge protection level until 4 kV differential mode and 4 kV common mode
910925868133	BRP102 LED55/740 II DM MSP	Luminaire surge protection level until 4 kV differential mode and 4 kV common mode
910925868134	BRP102 LED75/740 II DM MSP	Luminaire surge protection level until 4 kV differential mode and 4 kV common mode
910925868135	BRP102 LED110/740 II DM MSP	Luminaire surge protection level until 4 kV differential mode and 4 kV common mode

General Information

CoreLine Malaga LED

Order Code	Full Product Name	Lamp family code	Optic type	Product Family Code	Service tag
910925865338	BRP101 LED37/740 I DM	LED37	Distribution medium	BRP101	Yes
910925865339	BRP101 LED37/740 II DM	LED37	Distribution medium	BRP101	-
910925865552	BRP101 LED37/740 II DW SDM10	LED37	Distribution wide	BRP101	-
910925865553	BRP101 LED37/740 DM FU	LED37	Distribution medium	BRP101	-
910925867783	BRP101 LED37/740 II DM MSP	LED37	Distribution medium	BRP101	-
910925865340	BRP102 LED55/740 I DM	LED55	Distribution medium	BRP102	-
910925865341	BRP102 LED55/740 II DM	LED55	Distribution medium	BRP102	-
910925865342	BRP102 LED75/740 I DM	LED75	Distribution medium	BRP102	-
910925865343	BRP102 LED75/740 II DM	LED75	Distribution medium	BRP102	-

Order Code	Full Product Name	Lamp family code	Optic type	Product Family Code	Service tag
910925865344	BRP102 LED110/740 I DM	LED110	Distribution medium	BRP102	-
910925865345	BRP102 LED110/740 II DM	LED110	Distribution medium	BRP102	-
910925865554	BRP102 LED55/740 DW PZM-35	LED55	Distribution wide	BRP102	-
910925865555	BRP102 LED75/740 II DM SDM10	LED75	Distribution medium	BRP102	-
910925865556	BRP102 LED110/740 II DW FU	LED110	Distribution wide	BRP102	-
910925868133	BRP102 LED55/740 II DM MSP	LED55	Distribution medium	BRP102	-
910925868134	BRP102 LED75/740 II DM MSP	LED75	Distribution medium	BRP102	-
910925868135	BRP102 LED110/740 II DM MSP	LED110	Distribution medium	BRP102	-

Initial Performance (IEC Compliant)

Order Code	Full Product Name	Initial luminous flux
910925865338	BRP101 LED37/740 I DM	3054 lm
910925865339	BRP101 LED37/740 II DM	3054 lm
910925865552	BRP101 LED37/740 II DW SDM10	3054 lm
910925865553	BRP101 LED37/740 DM FU	3054 lm
910925867783	BRP101 LED37/740 II DM MSP	3054 lm
910925865340	BRP102 LED55/740 I DM	4600 lm
910925865341	BRP102 LED55/740 II DM	4600 lm
910925865342	BRP102 LED75/740 I DM	6133 lm
910925865343	BRP102 LED75/740 II DM	6133 lm

Order Code	Full Product Name	Initial luminous flux
910925865344	BRP102 LED110/740 I DM	9006 lm
910925865345	BRP102 LED110/740 II DM	9006 lm
910925865554	BRP102 LED55/740 DW PZM-35	4600 lm
910925865555	BRP102 LED75/740 II DM SDM10	6133 lm
910925865556	BRP102 LED110/740 II DW FU	9006 lm
910925868133	BRP102 LED55/740 II DM MSP	4600 lm
910925868134	BRP102 LED75/740 II DM MSP	6133 lm
910925868135	BRP102 LED110/740 II DM MSP	9006 lm

Order Code	Full Product Name	Driver failure rate at 5000 h
910925865338	BRP101 LED37/740 I DM	-
910925865339	BRP101 LED37/740 II DM	-
910925865552	BRP101 LED37/740 II DW SDM10	0.05 %
910925865553	BRP101 LED37/740 DM FU	0.05 %
910925867783	BRP101 LED37/740 II DM MSP	-
910925865340	BRP102 LED55/740 I DM	-
910925865341	BRP102 LED55/740 II DM	-
910925865342	BRP102 LED75/740 I DM	-
910925865343	BRP102 LED75/740 II DM	-

Order Code	Full Product Name	Driver failure rate at 5000 h
910925865344	BRP102 LED110/740 I DM	-
910925865345	BRP102 LED110/740 II DM	-
910925865554	BRP102 LED55/740 DW PZM-35	0.05 %
910925865555	BRP102 LED75/740 II DM SDM10	0.05 %
910925865556	BRP102 LED110/740 II DW FU	0.05 %
910925868133	BRP102 LED55/740 II DM MSP	-
910925868134	BRP102 LED75/740 II DM MSP	-
910925868135	BRP102 LED110/740 II DM MSP	-

CoreLine Malaga LED

