



For every project where light really matters. A slim fit

CoreLine SlimDownlight

CoreLine slimdownlight delivers on the CoreLine promise of innovative, easy to use and high-quality indoor LED downlights. CoreLine slimdownlight is an innovative range of recessed and surface-mounted luminaires. It is designed to provide uniform lighting across multiple application areas. With instant energy savings and a longer lifetime, this is an environmentally friendly and cost saving solution. Its MultiColorTemp feature offers a choice of two color temperatures in a single luminaire. This makes it easy to select the right product, gives you the flexibility respond to customer preferences on site, and means fewer product codes on stock. Simple and easy installation means our slim downlight fits the same size cut-out, while the minimal built-in depth of 34mm makes this product an ideal space saving solution, especially for projects with limited fitting space. InterAct Ready option with integrated wireless communications in this family is available, to be used with InterAct gateways, sensors and software.

Benefits

- MultiColorTemp option to change color temperature on site and simplify product selection
- Energy saving and longer lifetime to reduce overall operating costs
- Covers recessed and surface-mounted installations
- Fits suspended ceilings with low space (Product height < 50mm)
- Surface of light effect creates a comfortable, uniform look

CoreLine SlimDownlight

Features

- MultiColorTemp feature: two color temperature options in a single luminaire (3000K-4000K)
- Recessed (DN145B) and surface-mounted versions (DN145C)
- Energy-efficient with a long lifespan: up to 100lm/W and 50,000 hours @L70
- Push-in connector with through-wiring option
- Multiple light output options: 650/1100/2100 lumen
- Color temperature: 3000K and 4000K
- Choice of drivers; DALI and wireless with Interact ready
- Total height (including driver): 34mm recessed; 50mm surface mounted

Application

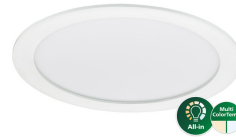
- Corridors
- Retail stores
- Reception areas
- Restrooms
- Technical rooms

Versions

CoreLine SlimDownlight DN145B
Micro All-in



CoreLine SlimDownlight DN145B
Compact All-in



Coreline SlimDownlight-DN145B
10S



Coreline SlimDownlight-DN145B
6S

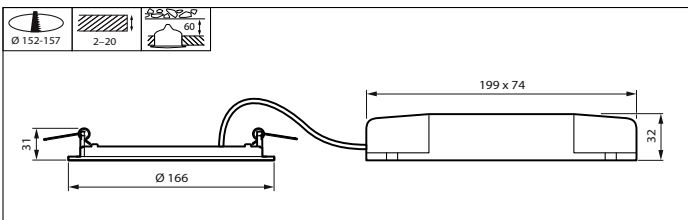
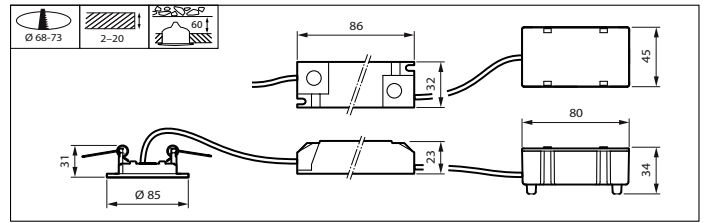
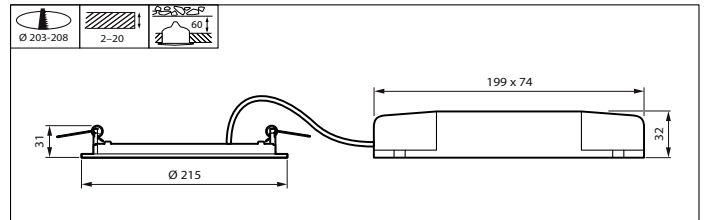
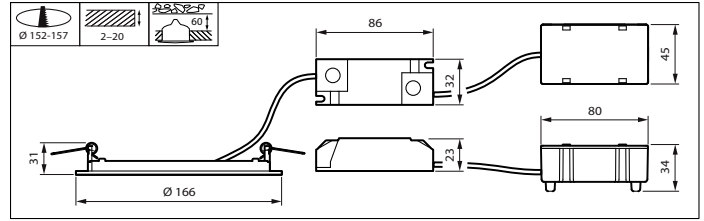
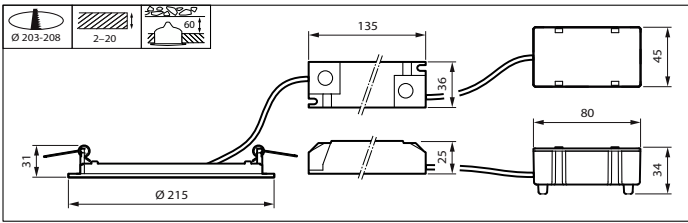
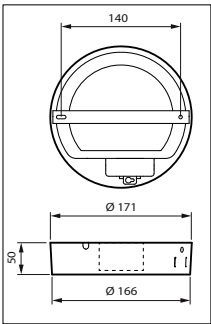
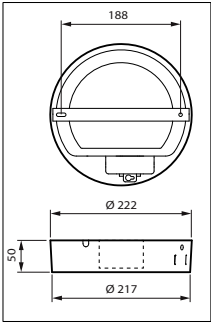


CoreLine SlimDownlight DN145B
Mini All-in



CoreLine SlimDownlight

Dimensional drawing



CoreLine SlimDownlight

Product details

CoreLine SlimDownlight 2100lm
side view



CoreLine SlimDownlight Surface-mounted 2100lm



Philips CoreLine SlimDownlight Recessed DT01



CoreLine SlimDownlight 2100lm
with PSU driver and easy
connector



CoreLine SlimDownlight 2100lm



Philips CoreLine SlimDownlight
Surface DT02



Philips CoreLine SlimDownlight
Surface DT01



CoreLine SlimDownlight

General Information

Driver included	Yes
ENEC mark	ENEC mark
Flammability mark	For mounting on normally flammable surfaces
Glow-wire test	Temperature 650 °C, duration 30 s
Number of gear units	1 unit

Operating and Electrical

Input Voltage	220 to 240 V
Line Frequency	50 or 60 Hz

Approval and Application

Protection class IEC	Safety class II
Mech. impact protection code	IK02

General Information (1/2)

Order Code	Full Product Name	CE mark	Lamp family code	Light source replaceable	Product family code
911401806380	DN145C LED10S/830 PSU II WH	Yes	LED10S	No	-
911401806480	DN145C LED10S/840 PSU II WH	Yes	LED10S	No	-
911401806580	DN145C LED20S/830 PSU II WH	Yes	LED20S	No	-
911401806680	DN145C LED20S/840 PSU II WH	Yes	LED20S	No	-
911401816085	DN145B LED6S/830_840 PSU WH	CE mark	-	-	-
910500465903	DN145B LED20S/830 PSD-E II WH	Yes	LED20S	No	DN145B
910500465904	DN145B LED20S/840 PSD-E II WH	Yes	LED20S	No	DN145B
910505101197	DN145B LED20S/830 WIA-E WH	Yes	-	No	DN145B
910505101198	DN145B LED20S/840 WIA-E WH	Yes	-	No	DN145B
911401806180	DN145B LED20S/830 PSU II WH	Yes	LED20S	No	-
911401806280	DN145B LED20S/840 PSU II WH	Yes	LED20S	No	-
911401816285	DN145B LED20S/830_840 PSU WH	CE mark	-	-	-
910500465901	DN145B LED10S/830 PSD-E II WH	Yes	LED10S	No	DN145B
910500465902	DN145B LED10S/840 PSD-E II WH	Yes	LED10S	No	DN145B
910505101195	DN145B LED10S/830 WIA-E WH	Yes	-	No	DN145B
910505101196	DN145B LED10S/840 WIA-E WH	Yes	-	No	DN145B
911401805980	DN145B LED10S/830 PSU II WH	Yes	LED10S	No	-
911401806080	DN145B LED10S/840 PSU II WH	Yes	LED10S	No	-
911401805780	DN145B LED6S/830 PSU II WH	Yes	LED6S	No	-
911401805880	DN145B LED6S/840 PSU II WH	Yes	LED6S	No	-
911401816185	DN145B LED10S/830_840 PSU WH	CE mark	-	-	-

General Information (2/2)

Order Code	Full Product Name	Service tag
911401806380	DN145C LED10S/830 PSU II WH	Yes
911401806480	DN145C LED10S/840 PSU II WH	Yes
911401806580	DN145C LED20S/830 PSU II WH	Yes
911401806680	DN145C LED20S/840 PSU II WH	Yes
911401816085	DN145B LED6S/830_840 PSU WH	-
910500465903	DN145B LED20S/830 PSD-E II WH	Yes
910500465904	DN145B LED20S/840 PSD-E II WH	Yes
910505101197	DN145B LED20S/830 WIA-E WH	-
910505101198	DN145B LED20S/840 WIA-E WH	-
911401806180	DN145B LED20S/830 PSU II WH	Yes
911401806280	DN145B LED20S/840 PSU II WH	Yes

Order Code	Full Product Name	Service tag
911401816285	DN145B LED20S/830_840 PSU WH	-
910500465901	DN145B LED10S/830 PSD-E II WH	Yes
910500465902	DN145B LED10S/840 PSD-E II WH	Yes
910505101195	DN145B LED10S/830 WIA-E WH	-
910505101196	DN145B LED10S/840 WIA-E WH	-
911401805980	DN145B LED10S/830 PSU II WH	Yes
911401806080	DN145B LED10S/840 PSU II WH	Yes
911401805780	DN145B LED6S/830 PSU II WH	Yes
911401805880	DN145B LED6S/840 PSU II WH	Yes
911401816185	DN145B LED10S/830_840 PSU WH	-

Light Technical (1/2)

Order Code	Full Product Name		Beam angle of light source	Correlated Color Temperature (Nom)	Optical cover type
	Name	All-in Type			
911401806380	DN145C LED10S/830 PSU II WH	-	120 degree(s)	3000 K	Opal
911401806480	DN145C LED10S/840 PSU II WH	-	120 degree(s)	4000 K	Opal

Order Code	Full Product Name		Beam angle of light source	Correlated Color Temperature (Nom)	Optical cover type
	Name	All-in Type			
911401806580	DN145C LED20S/830 PSU II WH	-	120 degree(s)	3000 K	Opal
911401806680	DN145C LED20S/840 PSU II WH	-	120 degree(s)	4000 K	Opal

CoreLine SlimDownlight

Order Code	Full Product Name	All-in Type	Beam angle of light source	Correlated Color Temperature (Nom)	Optical cover type
911401816085	DN145B LED6S/830_840 PSU WH	All-in, Multi Color Temperature	-	3000 K	-
910500465903	DN145B LED20S/830 PSD-E II WH	-	120 degree(s)	3000 K	Opal
910500465904	DN145B LED20S/840 PSD-E II WH	-	120 degree(s)	4000 K	Opal
910505101197	DN145B LED20S/830 WIA-E WH	-	120 degree(s)	3000 K	-
910505101198	DN145B LED20S/840 WIA-E WH	-	120 degree(s)	4000 K	-
911401806180	DN145B LED20S/830 PSU II WH	-	120 degree(s)	3000 K	Opal
911401806280	DN145B LED20S/840 PSU II WH	-	120 degree(s)	4000 K	Opal
911401816285	DN145B LED20S/830_840 PSU WH	All-in, Multi Color Temperature	-	3000 K	-
910500465901	DN145B LED10S/830 PSD-E II WH	-	120 degree(s)	3000 K	Opal

Order Code	Full Product Name	All-in Type	Beam angle of light source	Correlated Color Temperature (Nom)	Optical cover type
910500465902	DN145B LED10S/840 PSD-E II WH	-	120 degree(s)	4000 K	Opal
910505101195	DN145B LED10S/830 WIA-E WH	-	120 degree(s)	3000 K	-
910505101196	DN145B LED10S/840 WIA-E WH	-	120 degree(s)	4000 K	-
911401805980	DN145B LED10S/830 PSU II WH	-	120 degree(s)	3000 K	Opal
911401806080	DN145B LED10S/840 PSU II WH	-	120 degree(s)	4000 K	Opal
911401805780	DN145B LED6S/830 PSU II WH	-	120 degree(s)	3000 K	Opal
911401805880	DN145B LED6S/840 PSU II WH	-	120 degree(s)	4000 K	Opal
911401816185	DN145B LED10S/830_840 PSU WH	All-in, Multi Color Temperature	-	3000 K	-

Light Technical (2/2)

Order Code	Full Product Name	Color rendering index (CRI)	Luminous Efficacy (rated) (Nom)	Luminous Flux	Number of light sources	Optic type	Flickering value (PstLM) -	
							Flickering value as per EN 61000-3-3	Stroboscopic effect visibility measure (SVM)
911401806380	DN145C LED10S/830 PSU II WH	>80	100 lm/W	1,100 lm	1	Beam angle 90°	1	1.6
911401806480	DN145C LED10S/840 PSU II WH	>80	100 lm/W	1,100 lm	1	Beam angle 90°	1	1.6
911401806580	DN145C LED20S/830 PSU II WH	>80	100 lm/W	2,100 lm	1	Beam angle 90°	1	1.6
911401806680	DN145C LED20S/840 PSU II WH	>80	100 lm/W	2,100 lm	1	Beam angle 90°	1	1.6
911401816085	DN145B LED6S/830_840 PSU WH	≥80	100 lm/W	650 lm	-	Wide beam	-	-
910500465903	DN145B LED20S/830 PSD-E II WH	>80	93 lm/W	2,100 lm	1	Beam angle 90°	1	0.4
910500465904	DN145B LED20S/840 PSD-E II WH	>80	93 lm/W	2,100 lm	1	Beam angle 90°	1	0.4
910505101197	DN145B LED20S/830 WIA-E WH	>80	93 lm/W	2,100 lm	-	Beam angle 90°	1	0.4
910505101198	DN145B LED20S/840 WIA-E WH	>80	93 lm/W	2,100 lm	-	Beam angle 90°	1	0.4
911401806180	DN145B LED20S/830 PSU II WH	>80	100 lm/W	2,100 lm	1	Beam angle 90°	1	1.6
911401806280	DN145B LED20S/840 PSU II WH	>80	100 lm/W	2,100 lm	1	Beam angle 90°	1	1.6
911401816285	DN145B LED20S/830_840 PSU WH	≥80	100 lm/W	2,100 lm	-	Wide beam	-	-

CoreLine SlimDownlight

Order Code	Full Product Name	Color rendering index (CRI)	Luminous Efficacy (rated) (Nom)	Luminous Flux	Number of light sources	Optic type	Flickering value (PstLM) -	
							Flickering value as per EN 61000-3-3	Stroboscopic effect visibility measure (SVM)
910500465901	DN145B LED10S/830 PSD-E II WH	>80	85 lm/W	1,100 lm	1	Beam angle 90°	1	0.4
910500465902	DN145B LED10S/840 PSD-E II WH	>80	85 lm/W	1,100 lm	1	Beam angle 90°	1	0.4
910505101195	DN145B LED10S/830 WIA-E WH	>80	93 lm/W	1,100 lm	-	Beam angle 90°	1	0.4
910505101196	DN145B LED10S/840 WIA-E WH	>80	93 lm/W	1,100 lm	-	Beam angle 90°	1	0.4
911401805980	DN145B LED10S/830 PSU II WH	>80	100 lm/W	1,100 lm	1	Beam angle 90°	1	1.6
911401806080	DN145B LED10S/840 PSU II WH	>80	100 lm/W	1,100 lm	1	Beam angle 90°	1	1.6
911401805780	DN145B LED6S/830 PSU II WH	>80	100 lm/W	650 lm	1	Beam angle 90°	1	1.6
911401805880	DN145B LED6S/840 PSU II WH	>80	100 lm/W	650 lm	1	Beam angle 90°	1	1.6
911401816185	DN145B LED10S/830_840 PSU WH	≥80	100 lm/W	1,100 lm	-	Wide beam	-	-

Operating and Electrical

Order Code	Full Product Name	Power Consumption
911401806380	DN145C LED10S/830 PSU II WH	11 W
911401806480	DN145C LED10S/840 PSU II WH	11 W
911401806580	DN145C LED20S/830 PSU II WH	21 W
911401806680	DN145C LED20S/840 PSU II WH	21 W
911401816085	DN145B LED6S/830_840 PSU WH	6.5 W
910500465903	DN145B LED20S/830 PSD-E II WH	22.5 W
910500465904	DN145B LED20S/840 PSD-E II WH	22.5 W
910505101197	DN145B LED20S/830 WIA-E WH	22.5 W
910505101198	DN145B LED20S/840 WIA-E WH	22.5 W
911401806180	DN145B LED20S/830 PSU II WH	21 W
911401806280	DN145B LED20S/840 PSU II WH	21 W

Order Code	Full Product Name	Power Consumption
911401816285	DN145B LED20S/830_840 PSU WH	21 W
910500465901	DN145B LED10S/830 PSD-E II WH	13 W
910500465902	DN145B LED10S/840 PSD-E II WH	13 W
910505101195	DN145B LED10S/830 WIA-E WH	13 W
910505101196	DN145B LED10S/840 WIA-E WH	13 W
911401805980	DN145B LED10S/830 PSU II WH	11 W
911401806080	DN145B LED10S/840 PSU II WH	11 W
911401805780	DN145B LED6S/830 PSU II WH	6.5 W
911401805880	DN145B LED6S/840 PSU II WH	6.5 W
911401816185	DN145B LED10S/830_840 PSU WH	11 W

Temperature

Order Code	Full Product Name	Ambient temperature range
911401806380	DN145C LED10S/830 PSU II WH	0 to +35 °C
911401806480	DN145C LED10S/840 PSU II WH	0 to +35 °C
911401806580	DN145C LED20S/830 PSU II WH	0 to +35 °C
911401806680	DN145C LED20S/840 PSU II WH	0 to +35 °C
911401816085	DN145B LED6S/830_840 PSU WH	-20 to +40 °C
910500465903	DN145B LED20S/830 PSD-E II WH	0 to +35 °C
910500465904	DN145B LED20S/840 PSD-E II WH	0 to +35 °C
910505101197	DN145B LED20S/830 WIA-E WH	0 to +35 °C
910505101198	DN145B LED20S/840 WIA-E WH	0 to +35 °C
911401806180	DN145B LED20S/830 PSU II WH	0 to +35 °C
911401806280	DN145B LED20S/840 PSU II WH	0 to +35 °C

Order Code	Full Product Name	Ambient temperature range
911401816285	DN145B LED20S/830_840 PSU WH	-20 to +40 °C
910500465901	DN145B LED10S/830 PSD-E II WH	0 to +35 °C
910500465902	DN145B LED10S/840 PSD-E II WH	0 to +35 °C
910505101195	DN145B LED10S/830 WIA-E WH	0 to +35 °C
910505101196	DN145B LED10S/840 WIA-E WH	0 to +35 °C
911401805980	DN145B LED10S/830 PSU II WH	0 to +35 °C
911401806080	DN145B LED10S/840 PSU II WH	0 to +35 °C
911401805780	DN145B LED6S/830 PSU II WH	0 to +35 °C
911401805880	DN145B LED6S/840 PSU II WH	0 to +35 °C
911401816185	DN145B LED10S/830_840 PSU WH	-20 to +40 °C

Controls and Dimming

Order Code	Full Product Name	Dimmable
911401806380	DN145C LED10S/830 PSU II WH	No
911401806480	DN145C LED10S/840 PSU II WH	No
911401806580	DN145C LED20S/830 PSU II WH	No
911401806680	DN145C LED20S/840 PSU II WH	No

Order Code	Full Product Name	Dimmable
911401816085	DN145B LED6S/830_840 PSU WH	No
910500465903	DN145B LED20S/830 PSD-E II WH	Yes
910500465904	DN145B LED20S/840 PSD-E II WH	Yes
910505101197	DN145B LED20S/830 WIA-E WH	Yes

CoreLine SlimDownlight

Order Code	Full Product Name	Dimmable
910505101198	DN145B LED20S/840 WIA-E WH	Yes
911401806180	DN145B LED20S/830 PSU II WH	No
911401806280	DN145B LED20S/840 PSU II WH	No
911401816285	DN145B LED20S/830_840 PSU WH	No
910500465901	DN145B LED10S/830 PSD-E II WH	Yes
910500465902	DN145B LED10S/840 PSD-E II WH	Yes
910505101195	DN145B LED10S/830 WIA-E WH	Yes

Order Code	Full Product Name	Dimmable
910505101196	DN145B LED10S/840 WIA-E WH	Yes
911401805980	DN145B LED10S/830 PSU II WH	No
911401806080	DN145B LED10S/840 PSU II WH	No
911401805780	DN145B LED6S/830 PSU II WH	No
911401805880	DN145B LED6S/840 PSU II WH	No
911401816185	DN145B LED10S/830_840 PSU WH	No

Mechanical and Housing

Order Code	Full Product Name	Housing Color
911401806380	DN145C LED10S/830 PSU II WH	White
911401806480	DN145C LED10S/840 PSU II WH	White
911401806580	DN145C LED20S/830 PSU II WH	White
911401806680	DN145C LED20S/840 PSU II WH	White
911401816085	DN145B LED6S/830_840 PSU WH	White RAL9016
910500465903	DN145B LED20S/830 PSD-E II WH	White
910500465904	DN145B LED20S/840 PSD-E II WH	White
910505101197	DN145B LED20S/830 WIA-E WH	White
910505101198	DN145B LED20S/840 WIA-E WH	White
911401806180	DN145B LED20S/830 PSU II WH	White
911401806280	DN145B LED20S/840 PSU II WH	White

Order Code	Full Product Name	Housing Color
911401816285	DN145B LED20S/830_840 PSU WH	White RAL9016
910500465901	DN145B LED10S/830 PSD-E II WH	White
910500465902	DN145B LED10S/840 PSD-E II WH	White
910505101195	DN145B LED10S/830 WIA-E WH	White
910505101196	DN145B LED10S/840 WIA-E WH	White
911401805980	DN145B LED10S/830 PSU II WH	White
911401806080	DN145B LED10S/840 PSU II WH	White
911401805780	DN145B LED6S/830 PSU II WH	White
911401805880	DN145B LED6S/840 PSU II WH	White
911401816185	DN145B LED10S/830_840 PSU WH	White RAL9016

Approval and Application

Order Code	Full Product Name	Ingress protection code
911401806380	DN145C LED10S/830 PSU II WH	IP44
911401806480	DN145C LED10S/840 PSU II WH	IP44
911401806580	DN145C LED20S/830 PSU II WH	IP44
911401806680	DN145C LED20S/840 PSU II WH	IP44
911401816085	DN145B LED6S/830_840 PSU WH	IP20/44
910500465903	DN145B LED20S/830 PSD-E II WH	IP20/44
910500465904	DN145B LED20S/840 PSD-E II WH	IP20/44
910505101197	DN145B LED20S/830 WIA-E WH	IP20/44
910505101198	DN145B LED20S/840 WIA-E WH	IP20/44
911401806180	DN145B LED20S/830 PSU II WH	IP20/44
911401806280	DN145B LED20S/840 PSU II WH	IP20/44

Order Code	Full Product Name	Ingress protection code
911401816285	DN145B LED20S/830_840 PSU WH	IP20/44
910500465901	DN145B LED10S/830 PSD-E II WH	IP20/44
910500465902	DN145B LED10S/840 PSD-E II WH	IP20/44
910505101195	DN145B LED10S/830 WIA-E WH	IP20/44
910505101196	DN145B LED10S/840 WIA-E WH	IP20/44
911401805980	DN145B LED10S/830 PSU II WH	IP20/44
911401806080	DN145B LED10S/840 PSU II WH	IP20/44
911401805780	DN145B LED6S/830 PSU II WH	IP20/44
911401805880	DN145B LED6S/840 PSU II WH	IP20/44
911401816185	DN145B LED10S/830_840 PSU WH	IP20/44

Initial Performance (IEC Compliant)

Order Code	Full Product Name	Initial chromaticity	Luminous flux tolerance
911401806380	DN145C LED10S/830 PSU II WH	(0.43657,0.40454) SDCM<3	+/-10%
911401806480	DN145C LED10S/840 PSU II WH	(0.38212,0.38031) SDCM<3	+/-10%
911401806580	DN145C LED20S/830 PSU II WH	(0.43657,0.40454) SDCM<3	+/-10%
911401806680	DN145C LED20S/840 PSU II WH	(0.38212,0.38031) SDCM<3	+/-10%

Order Code	Full Product Name	Initial chromaticity	Luminous flux tolerance
911401816085	DN145B LED6S/830_840 PSU WH	(0.44, 0.41) SDCM <3; (0.38, 0.38) SDCM <3	-10% / +10%
910500465903	DN145B LED20S/830 PSD-E II WH	(0.43657,0.40454) SDCM<3	+/-10%
910500465904	DN145B LED20S/840 PSD-E II WH	(0.38212,0.38031) SDCM<3	+/-10%
910505101197	DN145B LED20S/830 WIA-E WH	(0.43657,0.40454) SDCM<3	+/-10%

CoreLine SlimDownlight

Order Code	Full Product Name	Initial chromaticity	Luminous flux tolerance
910505101198	DN145B LED20S/840 WIA-E WH	(0.38212,0.38031) SDCM<3	+/-10%
911401806180	DN145B LED20S/830 PSU II WH	(0.43657,0.40454) SDCM<3	+/-10%
911401806280	DN145B LED20S/840 PSU II WH	(0.38212,0.38031) SDCM<3	+/-10%
911401816285	DN145B LED20S/830_840 PSU WH	(0.44, 0.41) SDCM <3; (0.38, 0.38) SDCM <3	-10% / +10%
910500465901	DN145B LED10S/830 PSD-E II WH	(0.43657,0.40454) SDCM<3	+/-10%
910500465902	DN145B LED10S/840 PSD-E II WH	(0.38212,0.38031) SDCM<3	+/-10%
910505101195	DN145B LED10S/830 WIA-E WH	(0.43657,0.40454) SDCM<3	+/-10%

Order Code	Full Product Name	Initial chromaticity	Luminous flux tolerance
910505101196	DN145B LED10S/840 WIA-E WH	(0.38212,0.38031) SDCM<3	+/-10%
911401805980	DN145B LED10S/830 PSU II WH	(0.43657,0.40454) SDCM<3	+/-10%
911401806080	DN145B LED10S/840 PSU II WH	(0.38212,0.38031) SDCM<3	+/-10%
911401805780	DN145B LED6S/830 PSU II WH	(0.43657,0.40454) SDCM<3	+/-10%
911401805880	DN145B LED6S/840 PSU II WH	(0.38212,0.38031) SDCM<3	+/-10%
911401816185	DN145B LED10S/830_840 PSU WH	(0.44, 0.40) SDCM <3; (0.38, 0.38) SDCM <3	-10% / +10%

Over Time Performance (IEC Compliant)

Order Code	Full Product Name	Driver failure rate at 5000 h
911401806380	DN145C LED10S/830 PSU II WH	0.0015 %
911401806480	DN145C LED10S/840 PSU II WH	0.0015 %
911401806580	DN145C LED20S/830 PSU II WH	0.0015 %
911401806680	DN145C LED20S/840 PSU II WH	0.0015 %
911401816085	DN145B LED6S/830_840 PSU WH	-
910500465903	DN145B LED20S/830 PSD-E II WH	0.0015 %
910500465904	DN145B LED20S/840 PSD-E II WH	0.0015 %
910505101197	DN145B LED20S/830 WIA-E WH	-
910505101198	DN145B LED20S/840 WIA-E WH	-
911401806180	DN145B LED20S/830 PSU II WH	0.0015 %
911401806280	DN145B LED20S/840 PSU II WH	0.0015 %

Order Code	Full Product Name	Driver failure rate at 5000 h
911401816285	DN145B LED20S/830_840 PSU WH	-
910500465901	DN145B LED10S/830 PSD-E II WH	0.0015 %
910500465902	DN145B LED10S/840 PSD-E II WH	0.0015 %
910505101195	DN145B LED10S/830 WIA-E WH	-
910505101196	DN145B LED10S/840 WIA-E WH	-
911401805980	DN145B LED10S/830 PSU II WH	0.0015 %
911401806080	DN145B LED10S/840 PSU II WH	0.0015 %
911401805780	DN145B LED6S/830 PSU II WH	-
911401805880	DN145B LED6S/840 PSU II WH	-
911401816185	DN145B LED10S/830_840 PSU WH	-

Application Conditions

Order Code	Full Product Name	Maximum dim level	Suitable for random switching
911401806380	DN145C LED10S/830 PSU II WH	Not applicable	Yes
911401806480	DN145C LED10S/840 PSU II WH	Not applicable	Yes
911401806580	DN145C LED20S/830 PSU II WH	Not applicable	Yes
911401806680	DN145C LED20S/840 PSU II WH	Not applicable	Yes
911401816085	DN145B LED6S/830_840 PSU WH	-	Not applicable
910500465903	DN145B LED20S/830 PSD-E II WH	Not applicable	Yes
910500465904	DN145B LED20S/840 PSD-E II WH	Not applicable	Yes
910505101197	DN145B LED20S/830 WIA-E WH	Not applicable	Yes
910505101198	DN145B LED20S/840 WIA-E WH	Not applicable	Yes
911401806180	DN145B LED20S/830 PSU II WH	Not applicable	Yes
911401806280	DN145B LED20S/840 PSU II WH	Not applicable	Yes

Order Code	Full Product Name	Maximum dim level	Suitable for random switching
911401816285	DN145B LED20S/830_840 PSU WH	-	Not applicable
910500465901	DN145B LED10S/830 PSD-E II WH	Not applicable	Yes
910500465902	DN145B LED10S/840 PSD-E II WH	Not applicable	Yes
910505101195	DN145B LED10S/830 WIA-E WH	Not applicable	Yes
910505101196	DN145B LED10S/840 WIA-E WH	Not applicable	Yes
911401805980	DN145B LED10S/830 PSU II WH	Not applicable	Yes
911401806080	DN145B LED10S/840 PSU II WH	Not applicable	Yes
911401805780	DN145B LED6S/830 PSU II WH	Not applicable	Yes
911401805880	DN145B LED6S/840 PSU II WH	Not applicable	Yes
911401816185	DN145B LED10S/830_840 PSU WH	-	Not applicable

CoreLine SlimDownlight

