



# StoreFlux – powerful LED accent lighting that blends perfectly in the store architecture

## StoreFlux gen3 rimless

The StoreFlux gridlight can be equipped with up to three LED modules with a special reflector system to deliver top-quality light that makes your shop and merchandise look great. The combination of multiple LED sources with high lumen packages in one luminaire creates sparkling light effects. StoreFlux offers low maintenance compared with CDM and high efficiency compared to halogen.

### Benefits

- High-quality accent lighting thanks to PerfectAccent reflector's light signature
- Short payback compared with CDM luminaires due to high system efficacy
- Efficient and low-maintenance thanks to LED technology

### Features

- Multiple accent light sources in one luminaire (1, 2, or 3 LED modules)
- High lumen packages: up to 3900 lm per module (up to 3 head version)
- BK and WH finish options
- Ease of installation and maintenance (separate installation frame; replaceable LED light engines and reflectors)
- Rimless variant available (requires ZD51xB CFRM-RML installation frame accessory)
- 0,5m Wieland cable GST18 Male with locking device option
- +/-30° tilting angle

# StoreFlux gen3 rimless

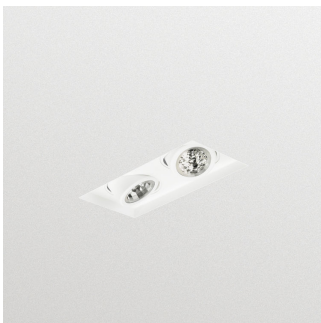
## Application

- Retail; fashion
- Hospitality

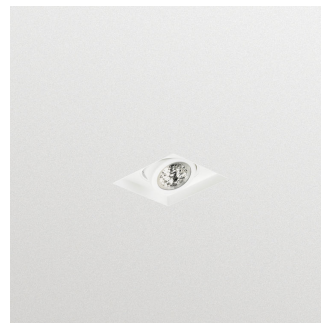
## Specifications

<b>Type</b>	GD611B (rimless, 1 head version)	<b>Median useful life</b>	25,000 hours
	GD612B (rimless, 2 head version)		<b>L90B50</b>
	GD613B (rimless, 3 head version)		
<b>Light source</b>	Non-replaceable LED module	<b>Driver failure rate</b>	1% per 5000 hours
<b>Power (per head)</b>	LED11S: 16.5 W	<b>Average ambient temperature</b>	+25 °C
	LED12S: 12.5 W	<b>Operating temperature range</b>	+10 to +35 °C
	LED20S: 20 W		
	LED17S: 16 W	<b>Driver</b>	Separate
	LED27S: 25 W	<b>Mains voltage</b>	230 or 240 V / 50-60 Hz
	LED39S: 39 W	<b>Dimming</b>	DALI
<b>Beam angle</b>	LED12S/17S/27S/39S: 29 and 35°,	<b>Material</b>	Housing: aluminum, steel
	LED11S/20S: 10°		Front glass: acrylic
<b>Luminous flux (at 3000 K)</b>	LED11S: 1100 lm	<b>Color</b>	White (WH-WH)
	LED12S: 1200 lm		Black (BK-BK)
	LED20S: 2000 lm	<b>Optical cover</b>	Acrylic
	LED17S: 1700 lm	<b>Connection</b>	Push-in connector; 3-pole push-in with loop-through (CU3); 5-pole push-in with loop-through (CU5)
	LED27S: 2700 lm	<b>Cable options</b>	0.5 m cable with 3-pole Wieland / Adels plug (CW); 0.5 m cable with 3-pole Wieland / Adels plug & lock (CW-L); 1 m cable with external BST14 DALI connector (C1KBST2)
	LED39S: 3900 lm	<b>Maintenance</b>	Replaceable light engines and driver
<b>Correlated Color Temperature</b>	2700, 3000 or 4000 K and CrispWhite	<b>Installation</b>	Directly into the ceiling after installing installation frame
<b>Color Rendering Index</b>	80	<b>Accessories</b>	Installation frames (ZD51*B CFRM-RML) to be ordered separately
	90 (light color 930)	<b>Remarks:</b>	Optical unit tiltable over 30° 360° rotation of the optical unit
	>95 (CRW)		
<b>Median useful life</b>	70,000 hours		
<b>L70B50</b>			
<b>Median useful life</b>	50,000 hours		
<b>L80B50</b>			

## Versions



StoreFlux GD612B recessed rimless LED gridlight



StoreFlux GD611B recessed rimless LED gridlight

# StoreFlux gen3 rimless

## Versions



StoreFlux GD613B recessed rimless LED gridlight

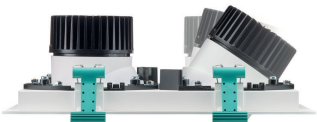
## Product details



IPDP\_GD601Bi\_0003-Detail photo



IPDP\_GD601Bi\_0005-Detail photo



## Accessories

Installation frame

Ordercode 910500452723



Installation frame

Ordercode 910500452724



# StoreFlux gen3 rimless

## Accessories

Installation frame

Ordercode 910500452725



### Application conditions

Ambient temperature range	+10 to +40 °C
Maximum dim level	Not applicable
Suitable for random switching	No

### Approval and application

Mech. impact protection code	IK02
Ingress protection code	IP20

### Controls and dimming

Dimmable	No
----------	----

### Operating and electrical

Input Voltage	220 to 240 V
---------------	--------------

### General information

Beam angle of light source	120 °
CE mark	CE mark
Protection class IEC	Safety class II
Driver included	Yes
ENEC mark	ENEC mark
Flammability mark	For mounting on normally flammable surfaces
Glow-wire test	Temperature 650 °C, duration 5 s
Light source replaceable	No
Service tag	Yes

### Initial performance (IEC compliant)

Initial chromaticity	(0.43, 0.40) SDCM <3
Init. Corr. Color Temperature	3000 K
Init. Color Rendering Index	≥80
Luminous flux tolerance	+/-10%

### Mechanical and housing

Color	White and white
-------	-----------------

### General information (1/2)

Order Code	Full Product Name	Optical cover/ lens type	Lamp			
			family code	Number of gear units	Number of light sources	
910500458226	GD612B LED17S/830 PSU-E MB WH-WH	Acrylic toothed	LED17S	2 units	2 pcs	
910500458452	GD612B LED12S/830 PSU-E MB WH-WH	Acrylic toothed	LED12S	2 units	2 pcs	
910500458453	GD612B LED20S/830 PSU-E NB WH-WH	Clear glass	LED20S	2 units	2 pcs	
910500458454	GD612B LED27S/830 PSU-E MB WH-WH	Acrylic toothed	LED27S	2 units	2 pcs	
910500458447	GD611B LED12S/830 PSU-E MB WH-WH	Acrylic toothed	LED12S	1 unit	1 pc	
910500458448	GD611B LED17S/830 PSU-E MB WH-WH	Acrylic toothed	LED17S	1 unit	1 pc	
910500458449	GD611B LED20S/830 PSU-E NB WH-WH	Clear glass	LED20S	1 unit	1 pc	
910500458450	GD611B LED27S/830 PSU-E MB WH-WH	Acrylic toothed	LED27S	1 unit	1 pc	
910500458457	GD613B LED17S/830 PSU-E MB WH-WH	Acrylic toothed	LED17S	3 units	3 pcs	

# StoreFlux gen3 rimless

## General information (2/2)

Order Code	Full Product Name	Optic type	Product	
			Family Code	
910500458226	GD612B LED17S/830 PSU-E MB WH-WH	Medium beam	GD612B	
910500458452	GD612B LED12S/830 PSU-E MB WH-WH	Medium beam	GD612B	
910500458453	GD612B LED20S/830 PSU-E NB WH-WH	Narrow beam	GD612B	
910500458454	GD612B LED27S/830 PSU-E MB WH-WH	Medium beam	GD612B	
910500458447	GD611B LED12S/830 PSU-E MB WH-WH	Medium beam	GD611B	

Order Code	Full Product Name	Optic type	Product	
			Family Code	
910500458448	GD611B LED17S/830 PSU-E MB WH-WH	Medium beam	GD611B	
910500458449	GD611B LED20S/830 PSU-E NB WH-WH	Narrow beam	GD611B	
910500458450	GD611B LED27S/830 PSU-E MB WH-WH	Medium beam	GD611B	
910500458457	GD613B LED17S/830 PSU-E MB WH-WH	Medium beam	GD613B	

## Initial performance (IEC compliant)

Order Code	Full Product Name	Initial LED luminaire efficacy	Initial	Initial
			luminous flux	input power
910500458226	GD612B LED17S/830 PSU-E MB WH-WH	118.05555555555556 lm/W	3400 lm	13.8 W
910500458452	GD612B LED12S/830 PSU-E MB WH-WH	120 lm/W	2400 lm	10.2 W
910500458453	GD612B LED20S/830 PSU- E NB WH-WH	102.0408163265306 lm/W	4000 lm	21 W
910500458454	GD612B LED27S/830 PSU-E MB WH-WH	120 lm/W	5400 lm	23.5 W
910500458447	GD611B LED12S/830 PSU-E MB WH-WH	120 lm/W	1200 lm	10 W

Order Code	Full Product Name	Initial LED luminaire efficacy	Initial	Initial
			luminous flux	input power
910500458448	GD611B LED17S/830 PSU-E MB WH-WH	118.05555555555556 lm/W	1700 lm	14.4 W
910500458449	GD611B LED20S/830 PSU- E NB WH-WH	102.0408163265306 lm/W	2000 lm	19.6 W
910500458450	GD611B LED27S/830 PSU-E MB WH-WH	120 lm/W	2700 lm	22.5 W
910500458457	GD613B LED17S/830 PSU-E MB WH-WH	118.05555555555556 lm/W	5100 lm	13.8 W

