

# Magnetic dimmable controller

## Step Dim controllers for SON lamps

The Step Dim controller is an electronic controller for Step Dim lighting systems. Dimming is realized by switching to a lower wattage during non-peak hours to save electricity.

### Benefits

- Great flexibility
- Dim-down and step-up function for early morning
- Black-out resistance function (ESC03)

### Features

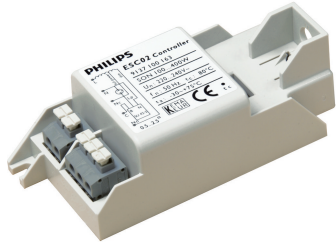
- 16 options for setting the timer
- Strong patent position

### Application

- For use with SON, SON-T and SON-T PIA Plus lamps, mainly in road lighting and public lighting applications
- For use in environments with different levels of traffic during peak and non-peak hours
- HID-Basic ballasts should be restricted to built-in situations where relative humidity is limited.

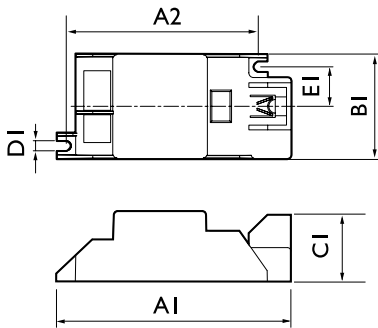
# Step Dim controllers for SON lamps

## Versions



ESC 02

## Dimensional drawing



Product	C1	A1	A2	B1
ESC 02	30 mm	100 mm	81.5 mm	45.0 mm
ESC 02	30 mm	100 mm	81.5 mm	45.0 mm

