

# Product Description

## HF-Basic II for TL-D lamps

Affordable, reliable, CE complying, high frequency electronic ballast for TLD fluorescent lamps Ideal alternative for electromagnetic (EM) ballasts

### Benefits

- Savings of 25% energy compared to electromagnetic “C-type” ballasts
- Instant start gives “direct” light
- HF-operation eliminates eye strain as caused by electromagnetic ballasts
- No igniter/capacitor needed, simplified wiring compared to Electromagnetic Solutions
- The HF-B TLD range has a robust design and meets internal safety, EMC and Immunity tests
- Offers the flexibility for simple wiring release possibility
- Including safety approbation via an external test-house covering IEC/EN 61347
- Automatic restart (after voltage dip or lamp exchange) ensures easy operation and hassle free re-lamping

### Features

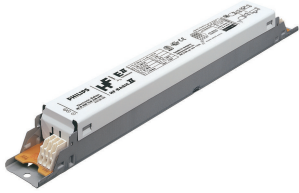
- Energy efficient CELMA EEI = A2
- Complying to CE, VDE-EMC, and ENEC
- 50.000 hour lifetime at 75°C (Tc max) and >4.000 on/off switches on one lamp
- Active power factor correction, smart power
- Instant start, flicker-free start
- High power factor >0.96 with THD <15%
- Required battery voltage for guaranteed ignition 198 - 254 V
- Required battery voltage for burning lamps 176 - 254 V
- Nominal light output is obtained at the DC voltage of 220 - 240 V
- EMC compliant to EN 55015 2006 + A1 2007
- Universal connector WAGO 251

# HF-Basic II for TL-D lamps

## Application

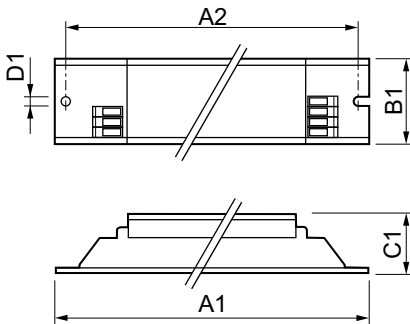
- Designed for applications where lamps burn for a long period of time and switching cycle (on/off) is infrequent (e.g. maximum 3 times a day)
- Ideal for installations such as department stores, airports, offices
- Suitable for high risk or explosive areas

## Versions



HF-B 136 TL-D EII 220-240V 50/60Hz

## Dimensional drawing



Product	D1	C1	A1	A2	B1
HF-B 136/236 TL-D EII 220-240V 50/60Hz	4.2 mm	28.0 mm	280.0 mm	265.0 mm	30.0 mm
HF-B 158/258 TL-D EII 220-240V 50/60Hz	4.2 mm	28.0 mm	280.0 mm	265.0 mm	30.0 mm

### Approval and Application

Energy Efficiency Index A2

### Operating and Electrical

Input Frequency 50 to 60 Hz  
Input Voltage 220 to 240 V

### General Information

Number Of Lamps 2 piece/unit  
Lamp Type TL-D

### Mechanical and Housing

Housing -

## General Information

## HF-Basic II for TL-D lamps

Order Code	Full Product Name	Number Of Products On MCB (16A Type B) (Nom)
913700192866	HF-B 136/236 TL-D EII 220-240V 50/60Hz	28

Order Code	Full Product Name	Number Of Products On MCB (16A Type B) (Nom)
913700192966	HF-B 158/258 TL-D EII 220-240V 50/60Hz	12

### System characteristics

Order Code	Full Product Name	Lamp Power On TL-D	Rated Ballast- Lamp Power
913700192866	HF-B 136/236 TL-D EII 220-240V 50/60Hz	32 W	36 W

Order Code	Full Product Name	Lamp Power On TL-D	Rated Ballast- Lamp Power
913700192966	HF-B 158/258 TL-D EII 220-240V 50/60Hz	50 W	58 W

