

# Long-lasting, reliable solution

## HID-Basic BSN/BMH semi-parallel for SON/CDO/CDM/MH/HPI

Impregnated electromagnetic copper ballasts for use with an external semi-parallel ignitor for CDM, CDO, MH, HPI (Plus) and SON lamps

### Benefits

- Long-lasting reliable solution protected from overheating
- Minimal watt losses thanks to orthocyclic winding process
- Control gear can be installed remotely

### Features

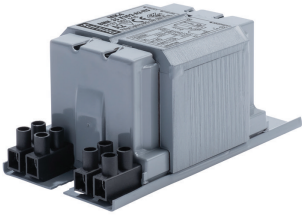
- All ballasts are equipped with ThermoSwitch for protection against end-of-lamp-life phenomena
- Ballast can also be used in combination with series (superimposed) ignitor
- Equipped with screw terminal blocks as standard; insert contacts available upon request
- Earthing-while-mounting facility
- Ballasts for alternative mains voltages/frequencies available upon request

### Application

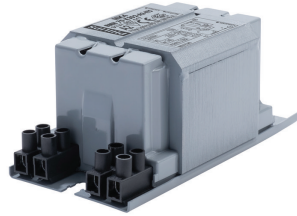
- Outdoor lighting
- Horticulture

# HID-Basic BSN/BMH semi-parallel for SON/CDO/CDM/MH/HPI

## Versions

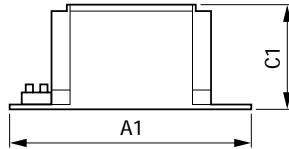
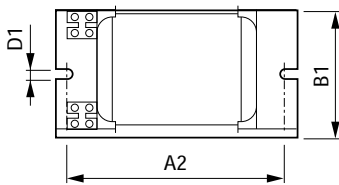


BMH 35 K302-A2-ITS 230V 50Hz



BMH 70 K302-A2-ITS 230V 50Hz

## Dimensional drawing



Product	A1	A2	B1	C1	D1
BMH 35 K302-A2-ITS 230V 50Hz	118 mm	94 mm	61 mm	52 mm	6.2 mm
BMH 70 K302-A2-ITS 230V 50Hz	118 mm	94 mm	61 mm	52 mm	6.2 mm

### Operating and Electrical

Input Frequency 50 Hz

Input Voltage 230 V

### General Information

Number Of Lamps 1 piece/unit

Lamp Type MH

## System characteristics

Order Code	Full Product Name	Rated Ballast-Lamp Power
913700751626	BMH 35 K302-A2-ITS 230V 50Hz	35 W

Order Code	Full Product Name	Rated Ballast-Lamp Power
913700751726	BMH 70 K302-A2-ITS 230V 50Hz	70 W

## HID-Basic BSN/BMH semi-parallel for SON/CDO/CDM/MH/HPI

