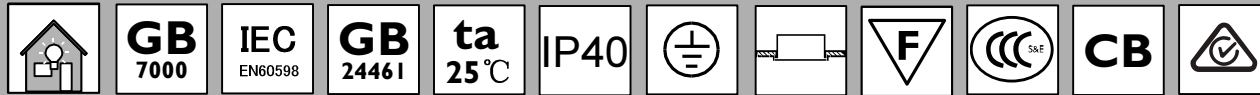


Recessed LED Lum./嵌入式LED灯具

CR418B

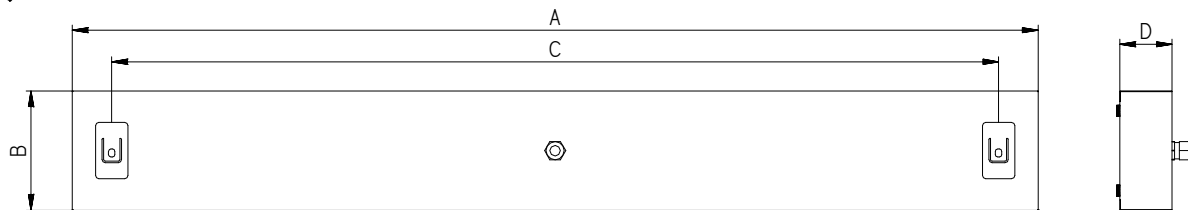
Mounting instruction/ 安装说明

CR418B-M001a

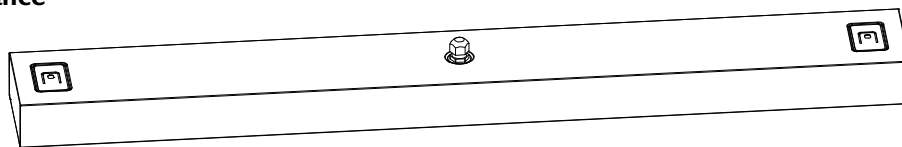


Type Number 型号描述	Pmax.(W) 光源(W)	Voltage/Frequency 电压/频率	A (mm)	B (mm)	C (mm)	D (mm)	
CR418B LED80	80	220-240V 50/60Hz	1198	148	1100	65	4.5
CR418B LED40	40	220-240V 50/60Hz	1198	148	1100	65	4.5
CR418B LED80/Y	80	220-240V 50/60Hz	1198	148	1100	65	4.5

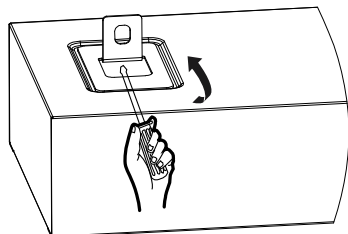
尺寸/Dimension



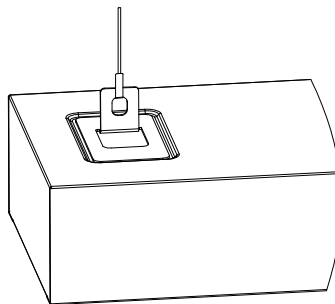
外形/Appearance



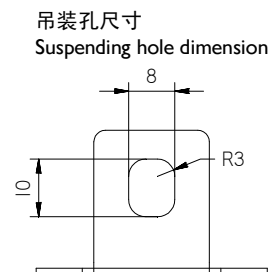
1 安装安全吊绳/Install Safety Rope



- 1.1 用螺丝刀掀起吊装孔
1.1 Using screw driver to lift the suspending hole

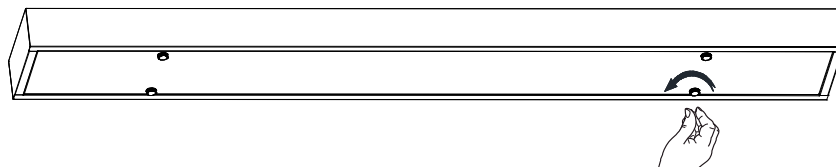


- 1.2 安装安全吊绳（安全吊绳自备），吊装孔尺寸如右图所示
1.2 Install safety rope (Autogamy safety rope), suspending hole dimension refer to right fig.

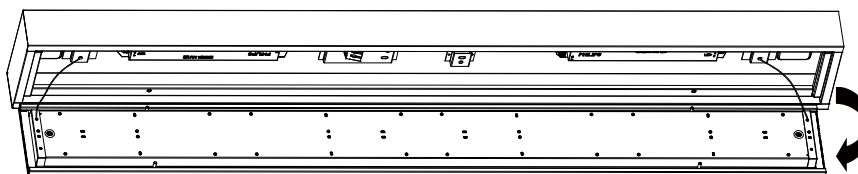


2 打开盖板/Open Cover

- 2.1 完全松开4个固定螺钉
2.1 Loose four screws on cover



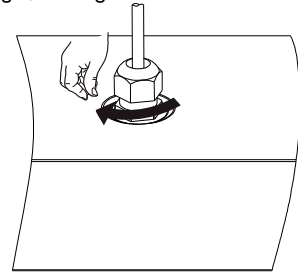
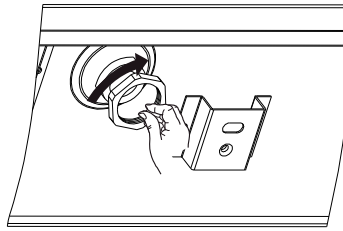
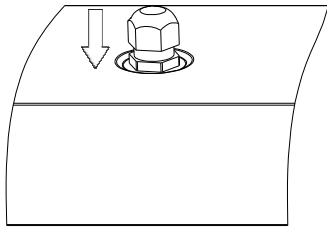
- 2.2 打开盖板
2.2 Open cover



注意事项：螺钉完全松开后，不必拆卸下来
Attention items.: screws shouldn't be taken apart after totally loosened

3 安装固线接头/Fix Cable Plug

- 3.1 如图所示，将固线接头装入安装孔，并用接头螺母将其固定于灯壳上
3.1 As figure shown, insert plug to cable mounting hole, then use plug nut to fix it to housing

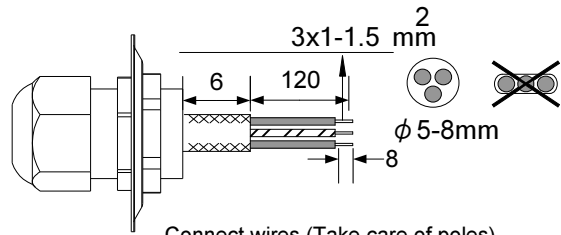
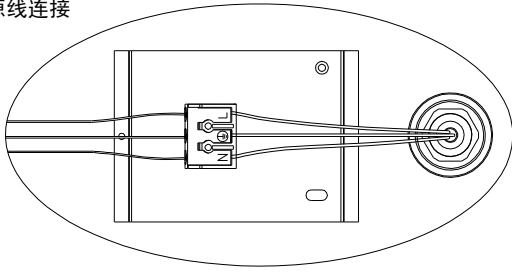


- 3.2 将电源线穿过接头，上下调整电源线至合适长度，拧紧固线螺母固定电源线
3.2 Put cable through plug hole, adjust cable up and down to appropriate length, then tighten cable nut to fasten cable

4 接电源线/Power Cable Connection

Power supply Connection
电源线连接

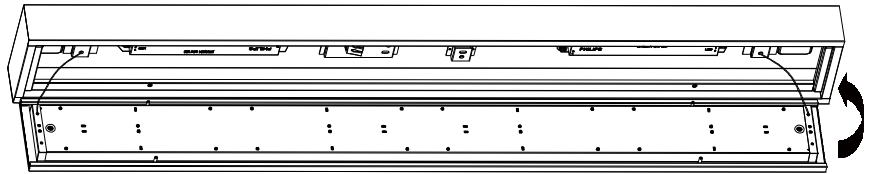
- 4.1 如下图所示，正确连接电源线到接线端子
4.1 Operate as figure shown, connect wire to terminal block



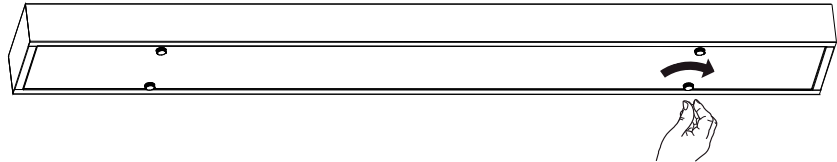
Connect wires (Take care of poles)
接线(注意保持极性正确)

5 合上盖板/Fix Cover

- 5.1 合上盖板
5.1 Close cover

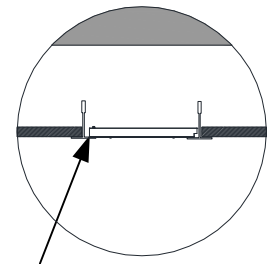
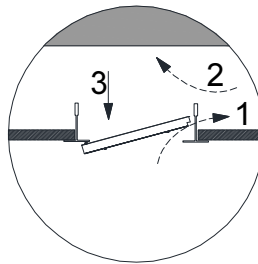
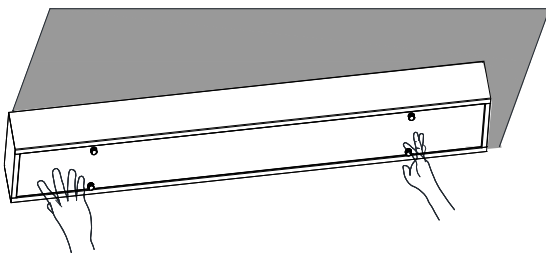


- 5.2 拧紧4个固定螺钉，将盖板固定于灯壳上
5.2 Loose four screws on cover

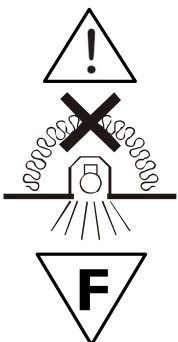


6 固定灯具/Fix Luminaire

- 6.1 按照图示步骤，固定灯具
6.1 According to operation step below, install luminaire on keel



灯具与龙骨之间加密封条
Place seal stripe between lum. and keel



- 1、The luminaire shall be installed by a qualified electrician and wired in accordance with the latest IEE electrical regulations or the national requirements
灯具应由有资格的电工安装，接线要符合IEE 电气标准或国家标准。
- 2、Do not switch on before complete installation.
接线过程中，切勿通电。
- 3、The luminaire shall ,under no circumstance,be covered with insulation matting or similar material.
灯具不适合被隔热衬垫或类似材料覆盖。
- 4、The luminaire is suitable for direct mounting on normally flammable material.
灯具适合于直接安装在普通可燃材料表面。
- 5、Luminaire application, customer should consult clean room experts.
灯具选用，请咨询洁净室应用专家。