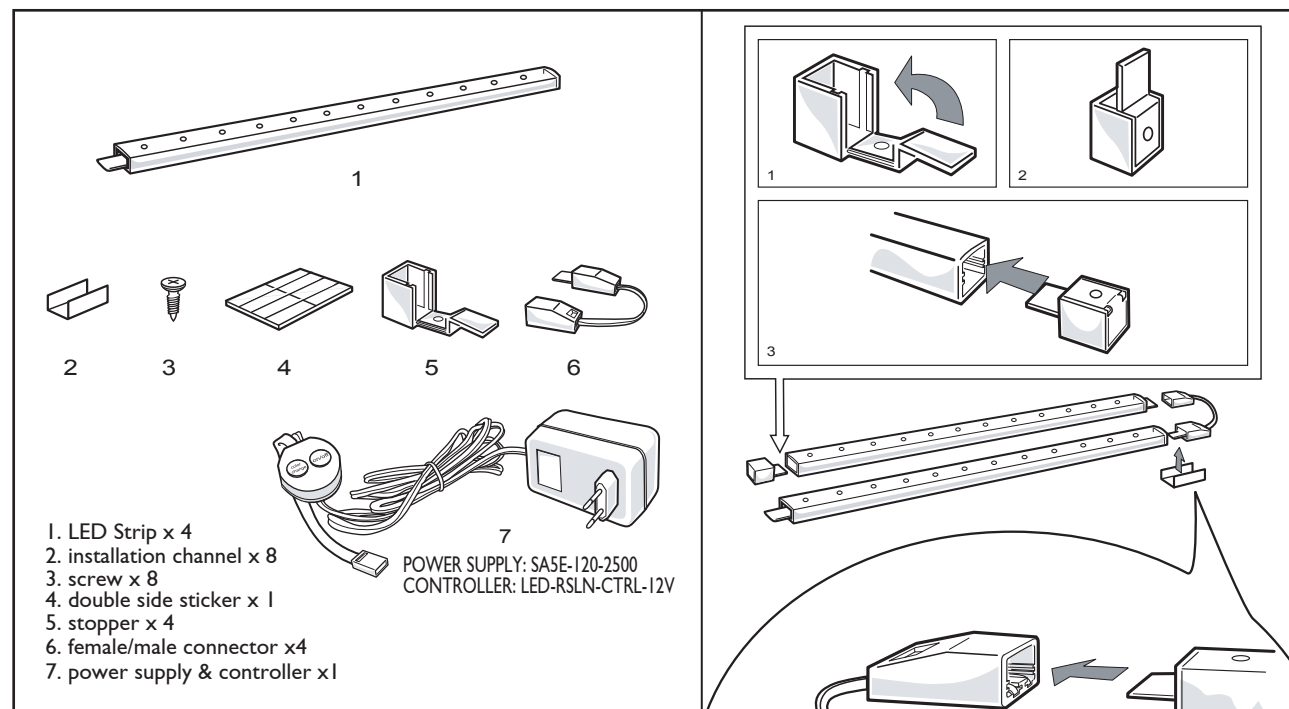


# LED strip kit

## Installation instructions



LEDs/Strip	Voltage	Class	L/Strip (mm)	P/Strip (W)	Weight/Strip (g)
LED Strip - RGB	12	12V DC	360	2.6	27



### Button function:

#### "Color Change" Button

Press it to set the mode. Color changing mode cycle:  
 White-Color Changing-Red-Green-Blue-Yellow-Cyan-Mauve

#### "On/off" Button

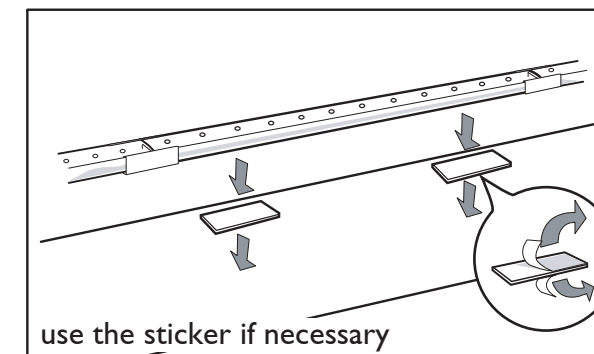
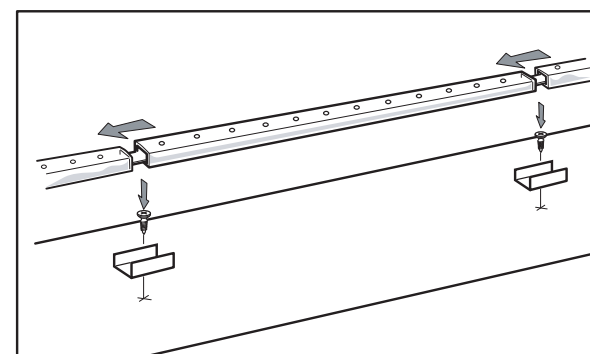
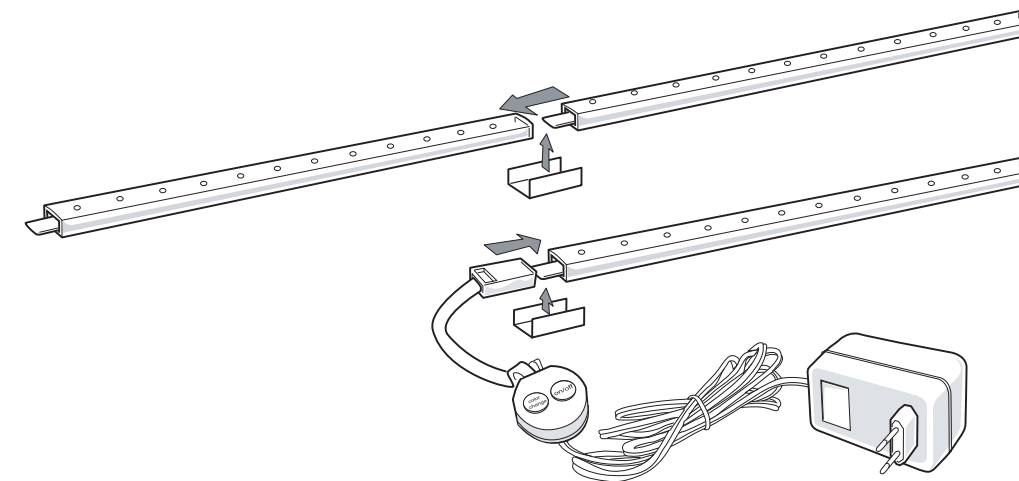
Press it to switch on/off.

Please notice that the status set in last time will be kept in its memory.

# PHILIPS

# LED strip kit

## Installation instructions



### Warning:

1. For indoor use only
2. Max load of one power supply: 4 pieces
3. Do not connect the strip to power supply when it is in the packing
4. Do not remove or insert strip while is connected to the power supply.
5. Please do not install it near heat source to avoid the damage on lighting fixtures because of temperature increasing.
6. Installation channel should be mounted on the connection part.
7. The power supply and controller can be replaced. If the cable or cord and/or the power supply and/or the controller are damaged, change these products with the same type reference numbers.



© 2006 Koninklijke Philips Electronics N.V.  
 All rights reserved. Reproduction in whole or in part is prohibited without the prior written consent of the copyright owner. The information presented in this document does not form part of any quotation or contract, is believed to be accurate and reliable and may be changed without notice. No liability will be accepted by the publisher for any consequence of its use. Publication thereof does not convey nor imply any license under patent or other industrial or intellectual property rights.  
 3222 635 59331  
 09/2006  
 Data subject to change.  
[www.philips.com/led](http://www.philips.com/led)

# PHILIPS