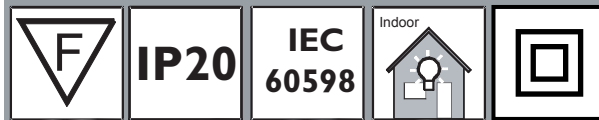
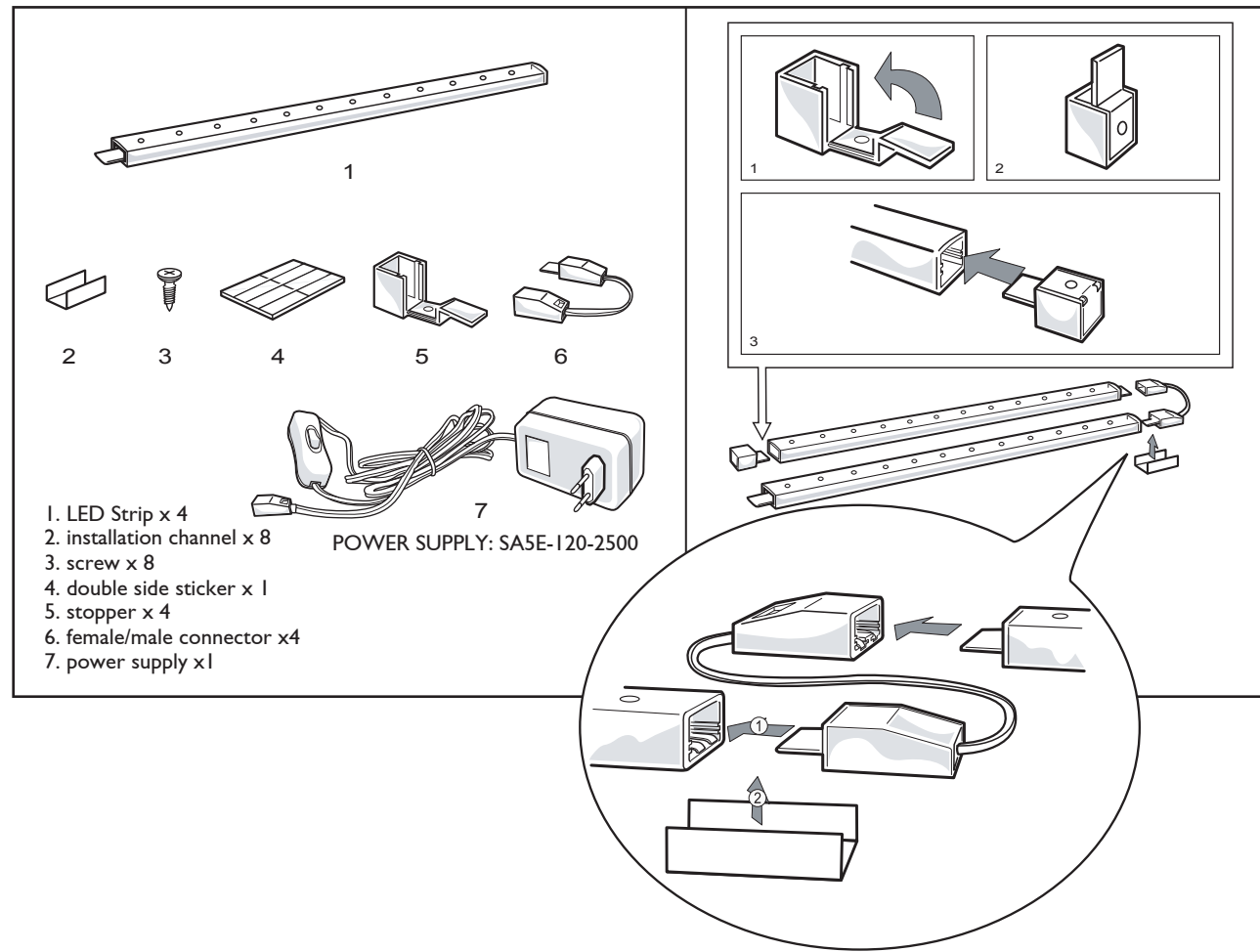


LED strip kit

Installation instructions



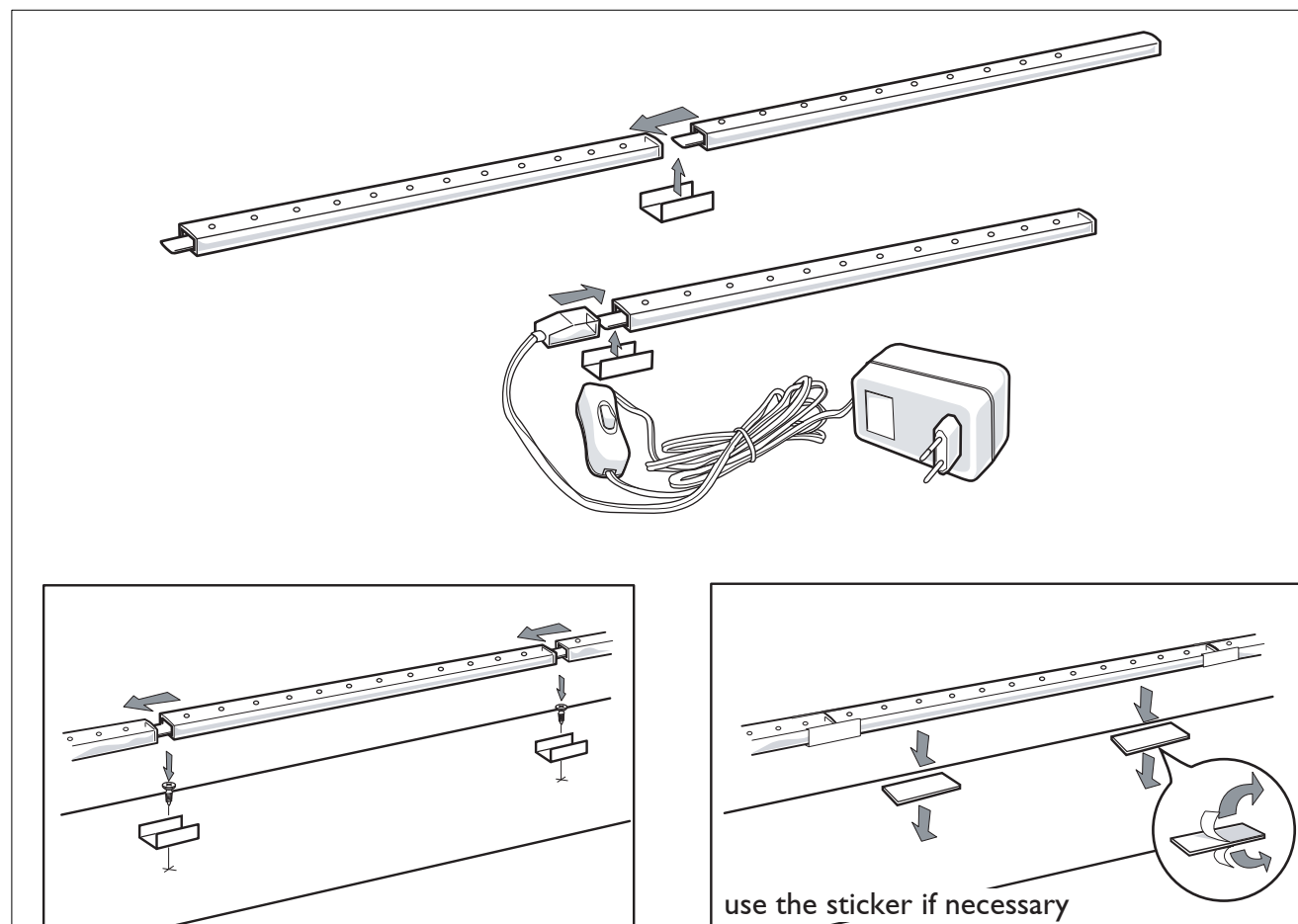
	LEDs/strip	Voltage	Class	L/Strip (mm)	P/Strip (W)	Weight/Strip (g)
LED Strip-RED	12	12V DC	3	305	0.8	19
LED Strip-GREEN	12	12V DC	3	305	0.8	19
LED Strip-BLUE	12	12V DC	3	305	0.8	19
LED Strip-AMBER	12	12V DC	3	305	0.8	19
LED Strip-WARM WHITE	12	12V DC	3	305	0.8	19
LED Strip-COOL WHITE	12	12V DC	3	305	0.8	19



PHILIPS

LED strip kit

Installation instructions



Warning:

1. For indoor use only
2. Max load of one power supply: 4 pieces
3. Do not connect the strip to power supply when it is in the packing
4. Do not remove or insert strip while is connected to the power supply.
5. Please do not install it near heat source to avoid the damage on lighting fixtures because of temperature increasing.
6. Installation channel should be mounted on the connection part.
7. The power supply and controller can be replaced. If the cable or cord and/or the power supply and/or the controller are damaged, change these products with the same type reference numbers.



© 2006 Koninklijke Philips Electronics N.V.
 All rights reserved. Reproduction in whole or in part is prohibited without the prior written consent of the copyright owner. The information presented in this document does not form part of any quotation or contract, is believed to be accurate and reliable and may be changed without notice. No liability will be accepted by the publisher for any consequence of its use. Publication thereof does not convey nor imply any license under patent or other industrial or intellectual property rights.
 3222 635 59331
 09/2006
 Data subject to change.
www.philips.com/led

PHILIPS