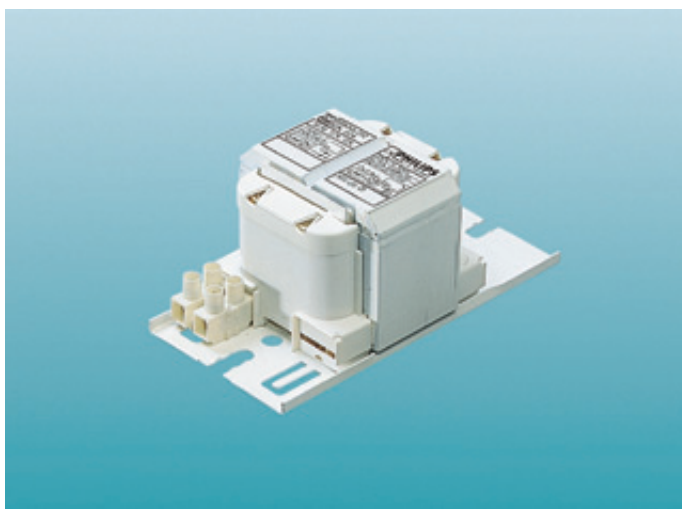
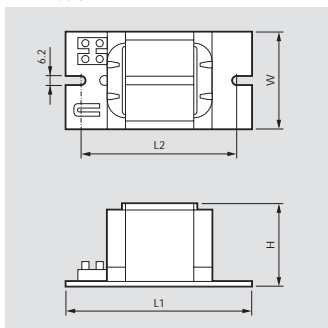


Basic ballasts for HPL and HPI(Plus) lamps



HID-Basic



Dimensions in mm

Type	A (L1)	B (L2)	C (W)	D (H)
BHL 50, BHL 80, BHL 125	117	98	61	52
BHL 250	133	117	75	65
BHL 400	159	138	75	65

Data valid for typical lamps (may vary per type)

Type	For lamps	Ignitor	Mains voltage/freq. V/Hz	PF Cap. uF/V	Lamp Power W	Ballast losses W	Current nominal A	Current max. A	Max. cable length m	T _w =130 dT °C
BHL 50 L200	HPL 50W	-	220/50	7/250	50	8.2	0.3	0.4	-	50
BHL 50 L202	HPL 50W	-	230/50	7/250	50	8.7	0.3	0.4	-	55
BHL 50 L307	HPL 50W	-	230,240/50	7/250	50	8.7/8.8	0.3	0.4	-	55
BHL 5080 L302	HPL 50W	-	230/50	7/250	50	8.2	0.3	0.4	-	65
BHL 5080 L407	HPL 50W	-	230/240/50	7/250	50	8.8/10	0.3	0.4	-	65
BHL 5080 L302	HPL 80W	-	230/50	8/250	80	9.2	0.45	0.65	-	65
BHL 5080 L407	HPL 80W	-	230,240/50	8/250	80	8.8/10	0.45	0.65	-	65
BHL 80 L200	HPL 80W	-	220/50	8/250	80	9.9	0.45	0.65	-	60
BHL 80 L202	HPL 80W	-	230/50	8/250	80	10.4	0.45	0.65	-	60
BHL 80 L307	HPL 80W	-	230,240/50	8/250	80	11.6/12	0.45	0.65	-	60
BHL 80125 L302	HPL 80W	-	230/50	8/250	80	9.6	0.45	0.65	-	70
BHL 80125 L407	HPL 80W	-	230,240/50	8/250	80	9.6	0.45	0.65	-	75
BHL 80125 L302	HPL 125W	-	230/50	10/250	125	14.9	0.7	1.1	-	70
BHL 80125 L407	HPL 125W	-	230,240/50	10/250	125	14.9	0.7	1.1	-	75
BHL 125 L200	HPL 125W	-	220/50	10/250	125	12.7	0.7	1.1	-	70
BHL 125 L202	HPL 125W	-	230/50	10/250	125	14	0.7	1.1	-	70
BHL 125 L307	HPL 125W	-	230,240/50	10/250	125	14/14.6	0.7	1.1	-	70
BHL 250 L200	HPL 250W	-	220/50	18/250	250	17.3	1.35	2.2	-	75
	HPI(Plus) 250W	SI 51	220/50	18/250	256	18	1.35	2.2	1500	70
BHL 250 L202	HPL 250W	-	230/50	18/250	250	18	1.35	2.2	-	75
	HPI(Plus) 250W	SI 51	230/50	18/250	256	18	1.35	2.2	1500	70
BHL 250 L307	HPL 250W	-	230,240/50	18/250	250	18.5/19.5	1.35	2.2	-	75
	HPI(Plus) 250W	SI 51	230,240/50	18/250	256	18.5/19.5	1.35	2.2	1500	75
BHL400 L200	HPI 400W	-	220/50	25/250	400	19.7	2.15	3.9	-	70
	HPI(Plus) 400W	SI 51	220/50	25/250	400	19.7	2.15	3.9	1500	80
BHL 400 L202	HPL 400W	-	230/50	25/250	400	19.7	2.15	3.9	-	75
	HPI(Plus) 400W	SI 51	230/50	25/250	400	20	2.15	3.9	1500	80
BHL 400 L307	HPL 400W	-	230,240/50	25/250	400	23.3/24.5	2.15	3.9	-	75
	HPI(Plus) 400W	SI 51	230,240/50	25/250	400	23.3/24.5	2.15	3.9	1500	75

1) Other voltages and frequencies available on request

Definition

HID-Basic are impregnated electromagnetic ballasts, of copper/iron construction, for use with HPL mercury fluorescent and HPI metal halide lamps.

Description

- Orthocyclic winding process results in limited ballast coil volume and reduced weight, with minimum watt losses
- Ballasts standard equipped with screw terminal blocks; insert contacts on request
- Earthing-while-mounting facility
- Simple installation and cabling.

Applications

The applications will be similar to those of the related lamps; HID-Basic ballasts should be restricted to built-in situations where relative humidity is limited.

Compliances and approvals

- RFI EN 55015
- Harmonics EN 61000-3-2
- Safety EN 60922
- Performance EN 60923
- Quality standard ISO 9001
- Environmental standard ISO 14001
- Approval marks ENEC
- CE marking.

Basic ballasts for HPL and HPI(Plus) lamps

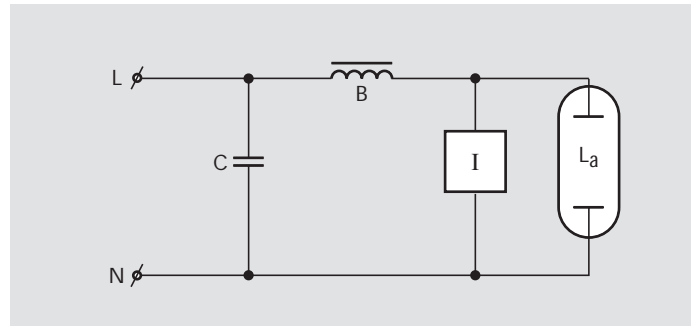
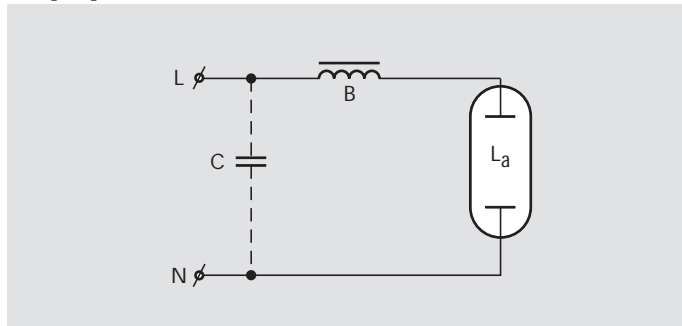
Ordering and packaging data

Ballast	1 Piece		Bulk packing						EAN code	EOC
	EAN code	Weight kg	Qty. pcs.	Dimensions (cm)			Volume m ³	Weight kg		
				L	W	H				
BHL 50 L200	8711500 919335	0.87	6	19.6	13.3	11.1	0.002	5.3	8711500 060884	919335
BHL 50 L202	8711500 919311	0.87	6	19.6	13.3	11.1	0.002	5.3	8711500 060860	919311
BHL 50 L307	8711500 919076	0.87	6	19.6	13.3	11.1	0.002	5.3	8711500 060891	919076
BHL 5080 L302	8711500 919656	1.05	6	19.6	13.3	11.1	0.002	6.4	8711500 060952	919656
BHL 5080 L407	8711500 919670	1.05	6	19.6	13.3	11.1	0.002	6.4	8711500 060976	919670
BHL 80 L200	8711500 945419	0.87	6	19.6	13.3	11.1	0.002	5.3	8711500 061317	945419
BHL 80 L202	8711500 945433	0.87	6	19.6	13.3	11.1	0.002	5.3	8711500 061324	945433
BHL 80 L307	8711500 919083	0.87	6	19.6	13.3	11.1	0.002	5.3	8711500 061348	919083
BHL 80125 L302	8711500 945532	1.30	6	19.6	13.3	11.1	0.002	7.9	8711500 060679	945532
BHL 80125 L407	8711500 945549	1.30	6	19.6	13.3	11.1	0.002	7.9	8711500 060693	945549
BHL 125 L200	8711500 919397	1.05	6	19.6	13.3	11.1	0.002	6.4	8711500 060907	919397
BHL 125 L202	8711500 919434	1.05	6	19.6	13.3	11.1	0.002	6.4	8711500 060938	919434
BHL 125 L307	8711500 919090	1.05	6	19.6	13.3	11.1	0.002	6.4	8711500 060921	919090
BHL 250 L200	8711500 737434	1.85	6	24.2	14.1	13.7	0.004	11.4	8711500 737441	737434
BHL 250 L202	8711500 738165	1.85	6	24.2	14.1	13.7	0.004	11.4	8711500 738172	738165
BHL 250 L307	8711500 737229	1.85	6	24.2	14.1	13.7	0.004	11.4	8711500 737236	737229
BHL 400 L200	8711500 737496	2.90	6	24.2	16.6	13.7	0.005	17.7	8711500 737502	737496
BHL 400 L202	8711500 739209	2.95	6	24.2	16.6	13.7	0.005	18.0	8711500 739216	739209
BHL 400 L307	8711500 737250	2.95	6	24.2	17.5	13.7	0.005	17.7	8711500 737267	737250

Technical data for installation

Mains operation	
With tolerances for performance	-8%...+6%
With tolerances for operation	-10...+10%
Operation frequency (typical)	50 Hz
Power factor with specified capacitor (minimum)	0.85

Wiring diagram



Wire cross-section:	
On the mains side:	0.75...2.5 mm ²
Strip length:	6 mm