

# PHILIPS

sense and simplicity

## Philips MASTERColour CDM-R Mini

Add a sparkle to your lighting options



December 2008



Add a sparkle to your lighting options

The new Philips MASTERColour CDM-R Mini brings trusted MASTERColour quality to 50mm reflector lamps with the superior output and colour stability to create just the right atmosphere to match your customers' retail brand and positioning. And it does so while offering longer life as well as being easy to use and replace. Never before has such performance and convenience been available in a 50mm diameter lamp.

**PHILIPS**  
sense and simplicity

# Add a sparkle to your lighting options



CDM performance



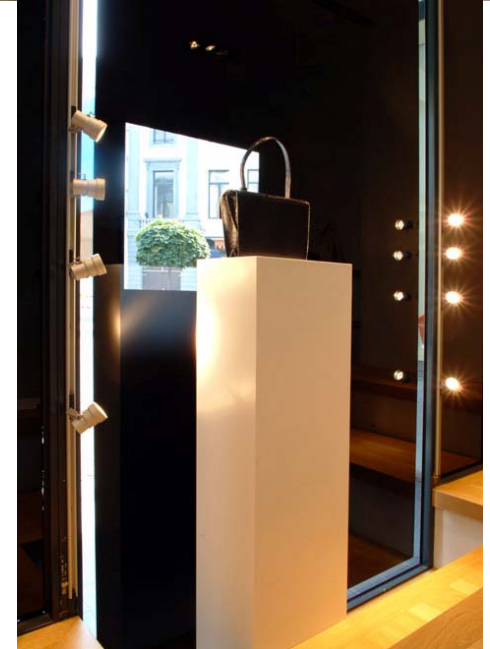
Reference



Miniaturised reflector

## Applications

- **20W**
  - Display lighting
  - Spot and track lighting
  - Downlighting
  - Mini floodlighting
  - Indoor / Outdoor
- **Lighting differentiation**
  - Miniaturisation with CDM based accent lighting
  - Save up to 60% on energy consumption compared to halogen

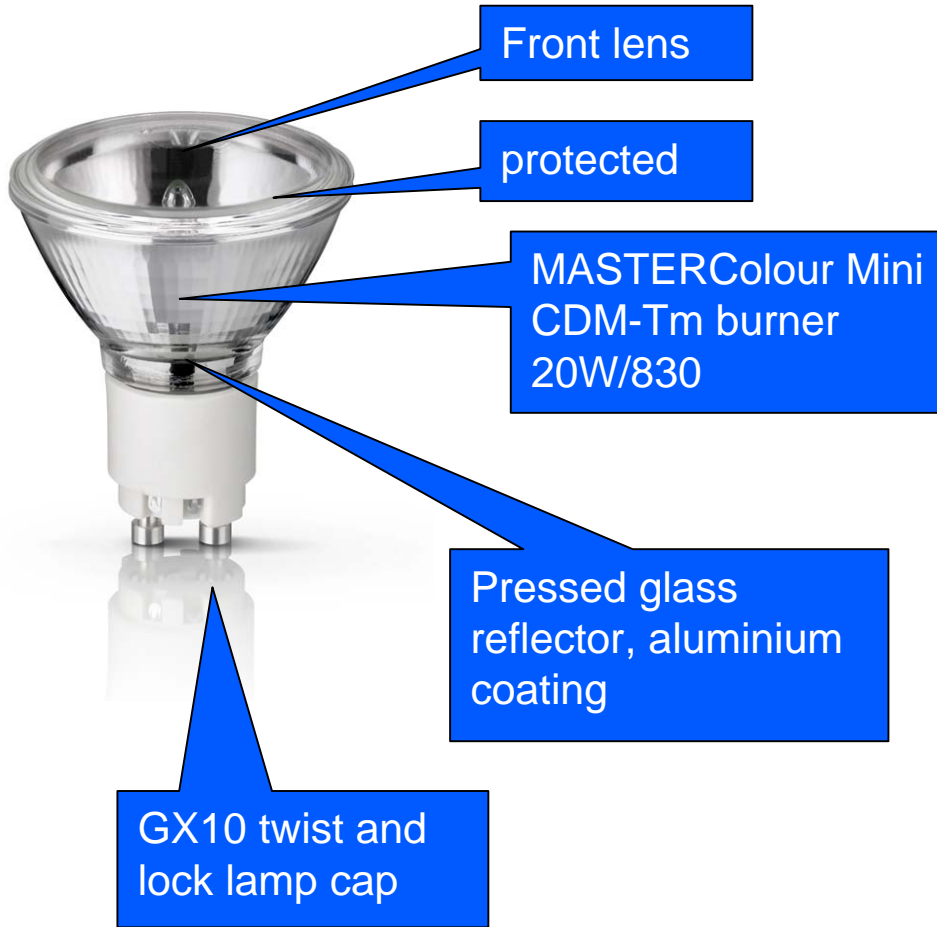


# Making the choice easy

- Quick installation and re-lamping
- Suitable for open luminaire
- Well accepted standard GX10 twist and lock system



# Features and benefits



Suitable for open luminaires

Easy to install, easy to replace

100% compatible with existing GX10 compact HID systems

High light output, low cost of ownership, less heat, sparkling white light, excellent colour rendering

Easy and fast development of luminaire

No additional reflector needed. Possibility to change beam angle by simply replacing the lamp

# Lamp Technical Specification CDM-R Mini



CDM-R Mini 20W/830

I max 10°	11000cd
I max 25°	3500 cd
I max 40°	1700 cd
Colour temperature	3000K
Colour rendering	87
Lifetime (50%)	12000 h

## Miniaturisation and ease of use

- Miniaturised CDM reflector lamp
- Simple solution for new luminaire developments
  - Easy to use and replace

## Excellent light quality

- Crisp white light
  - Superior output and colour stability
- Excellent merchandise representation

## Highest performance in a 50 mm reflector lamp

- Highest beam intensity
  - Up to 60% energy saving per light point versus Halogen

# Logistics information

<b>12NC</b>	<b>10NC</b>	<b>Product name</b>	<b>EOC</b>	<b>Outerbox (Pieces Per)</b>
9280 949 05330	9280 949 05300	MASTERC CDM-R Mini 20W/830 GX10 MR16 10D 1CT/6	872790080001210	6
9280 956 05330	9280 956 05300	MASTERC CDM-R Mini 20W/830 GX10 MR16 25D 1CT/6	872790080003610	6
9280 957 05330	9280 957 05300	MASTERC CDM-R Mini 20W/830 GX10 MR16 40D 1CT/6	872790080005010	6

## FAQ's

- **Is the CDM-R Mini compatible with other MR16 GX10 lamps from the competition?**
  - Yes, it is fully compatible with existing MR16 20W GX10 CHID systems (lamps and control gear).
- **Is it compatible with halogen low voltage dichroic reflector lamp?**
  - No, diameter is the same but connector-cable-gear are different from halogen systems. Length of GX10 lamps is also longer than length of halogen low voltage GU5.3 lamps. Nevertheless for OEM manufacturers, adaptation of halogen low voltage reflector luminaires is very easy in many cases.
- **Is it possible to use the Philips HID PrimaVision Mini gear?**
  - Yes, it is recommended for optimal performance but any other electronic gear suitable for GX10 compact HID lamps can also be used.

