

LLC7020/00

Installation instructions

Instructions de montage

Montageanleitung

Montage instructie

Istruzioni di montaggio

Instrucciones de montaje

Instruções de montagem

Monteringsinstruktioner

Monteringsvejledning

Kokoonpano- ja kiinnitysohjeet

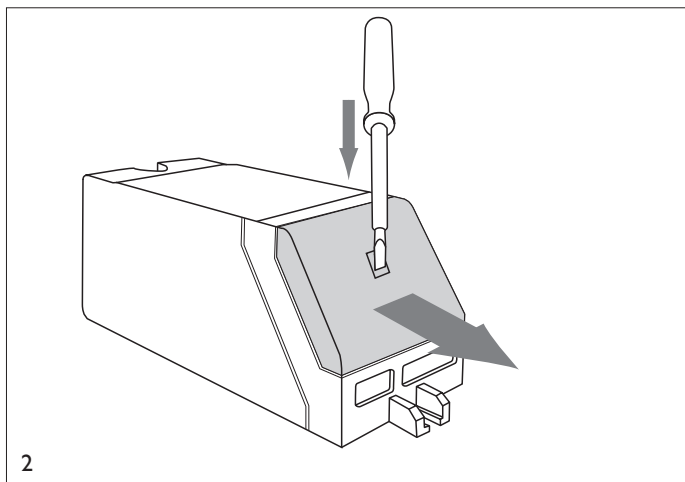
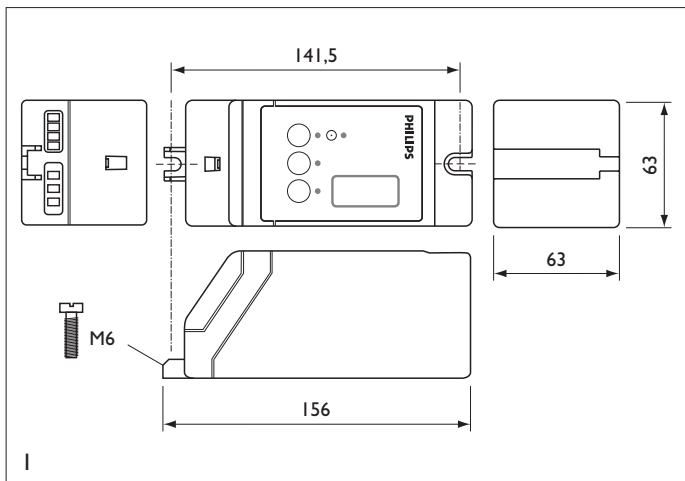
Montaj yönergesi

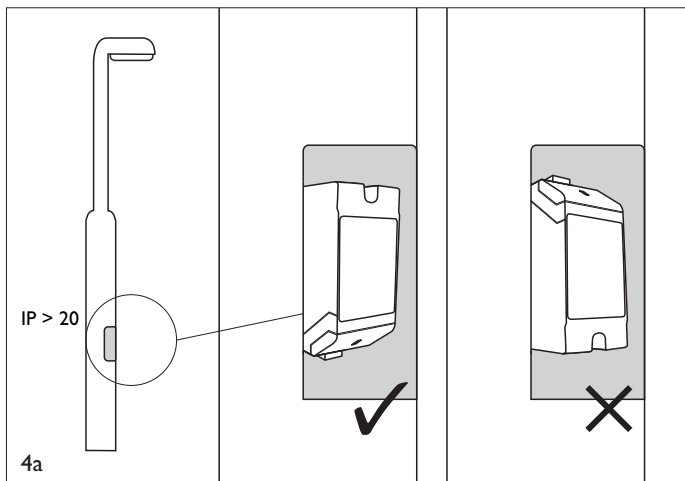
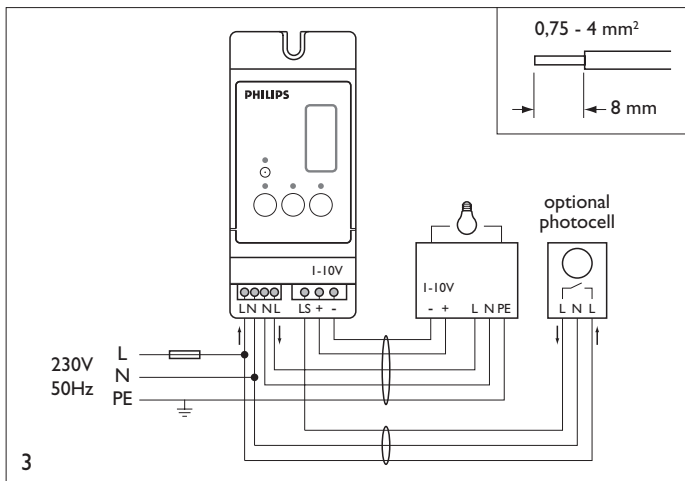
Οδηγίες συναρμολόγησης

Instrukcja montażu

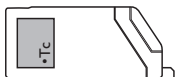



PHILIPS





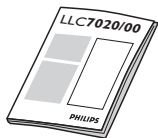
IP \geq 43



 T case: max. 85°C

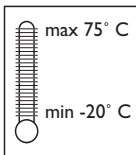
4b

PHILIPS




Datasheet

5



RH
20 - 95%



0,308 kg

U_n : 230V \pm 10%
 P_L : 32 - 400W
 f_n : 50 Hz

3222 636 4603 I

06/2007

Printed in EU

Data subject to change

<http://www.philips.com/lightingcontrols>

