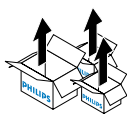




Quick installation guide

Philips GreenPower LED research module



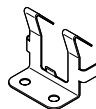
GreenPower LED research module



Mounting bracket 12 mm pipe



Mounting bracket 3/8" pipe



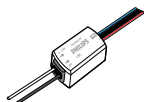
Mounting bracket shelf



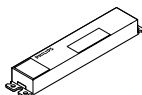
Connector Xtend



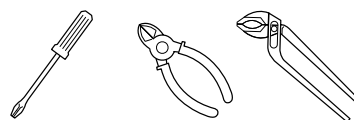
Connector End cap



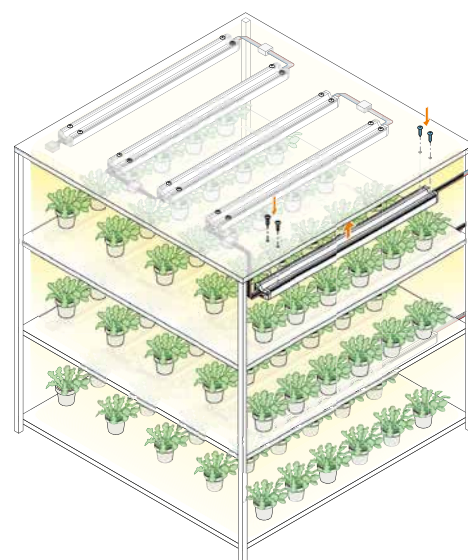
LGM dimming unit



LED power driver

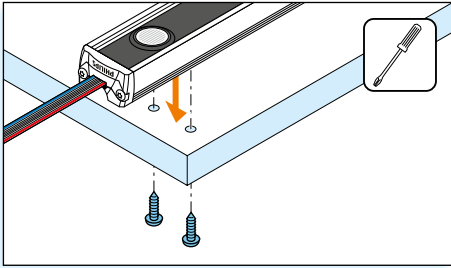
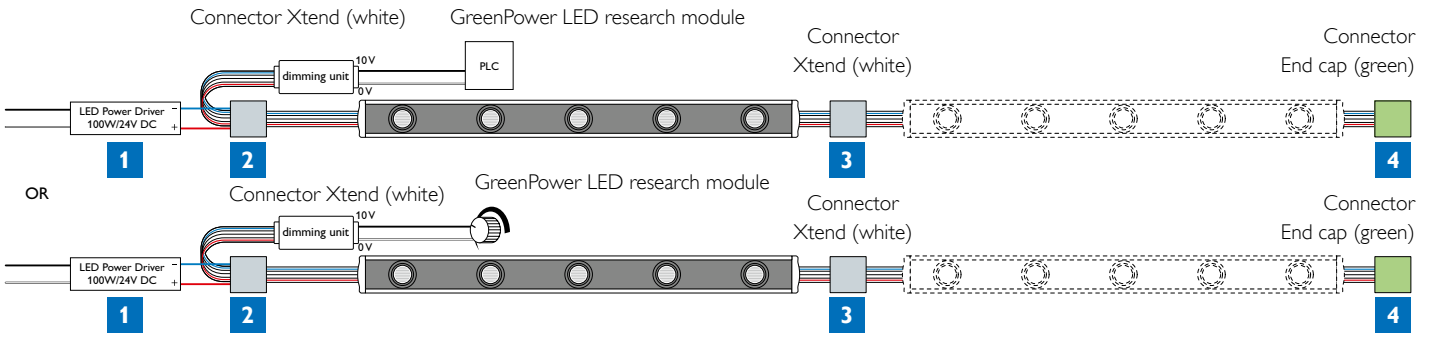


Factory fastener cross recessed pan head tapping screw, steel zinc plated 26660 ST3.5*xx where xx = length screw

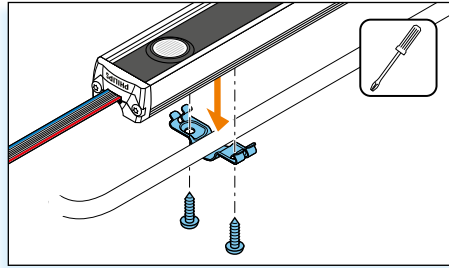


PHILIPS

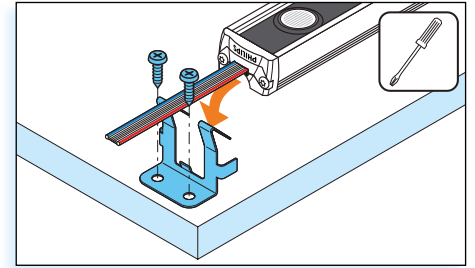
Installation of a tunable system



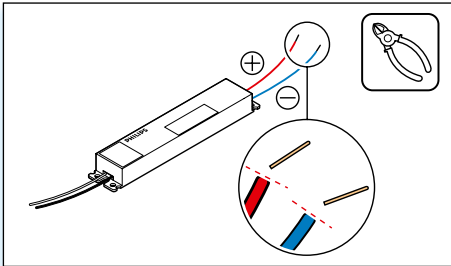
choose: mounting directly on shelves



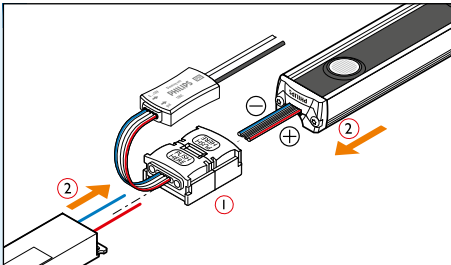
choose: mounting on cooling pipes,
bracket 3/8 or 12 mm



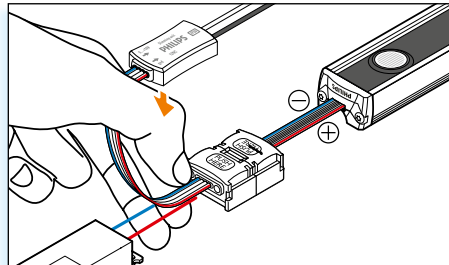
choose: mounting on shelves with bracket shelf



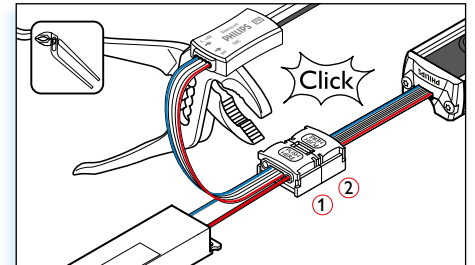
1



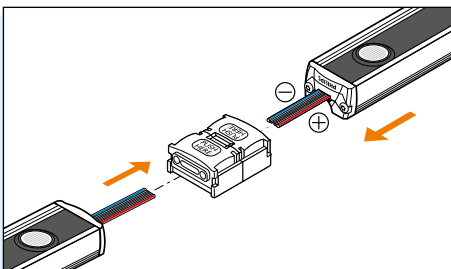
2a



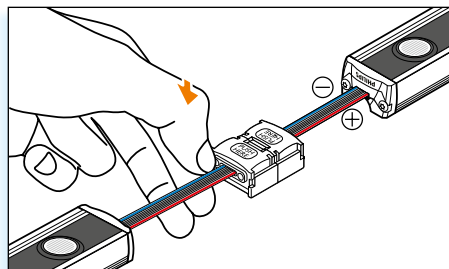
2b



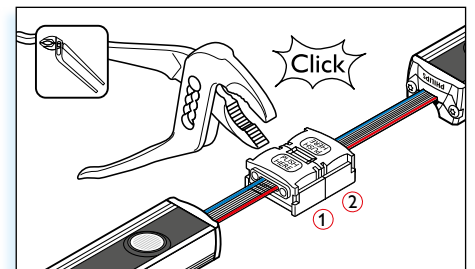
2c



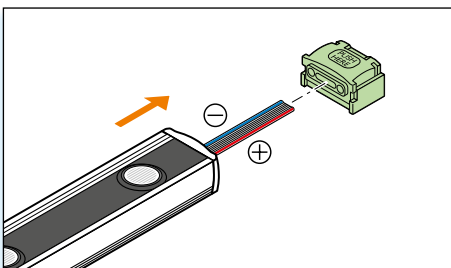
3a



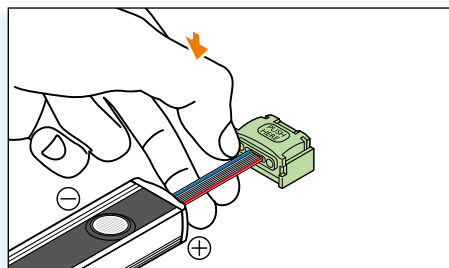
3b



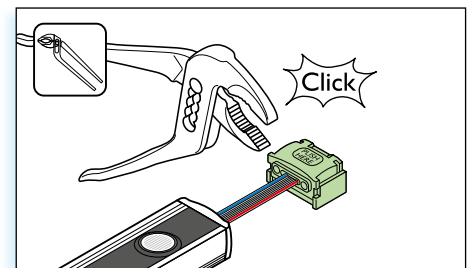
3c



4a



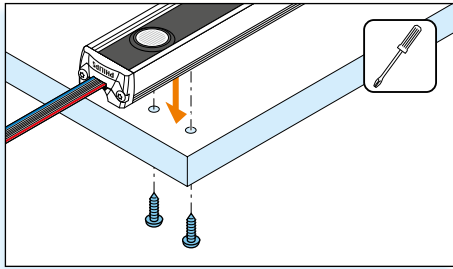
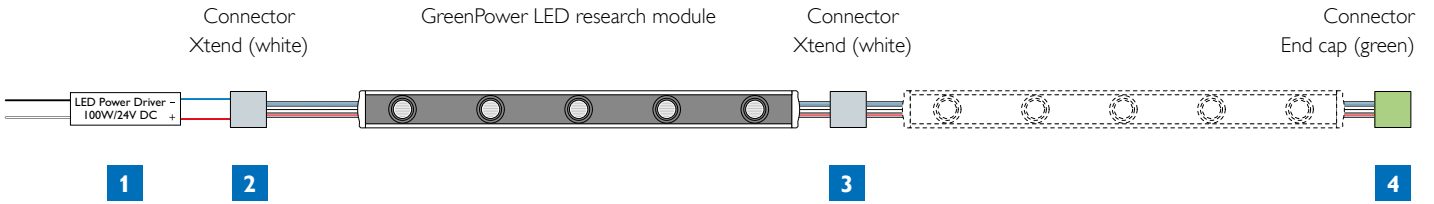
4b



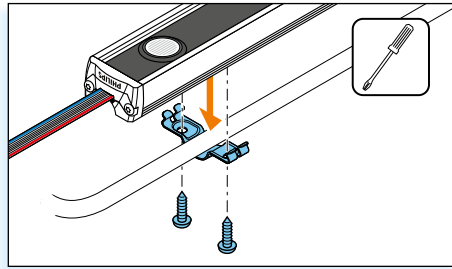
4c

⚠ WARNING
Turn power off before installation.
All work should be done according to appropriate electrical codes.

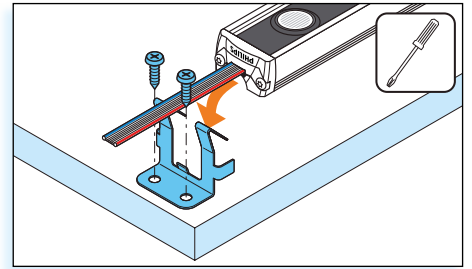
Installation of a fixed system



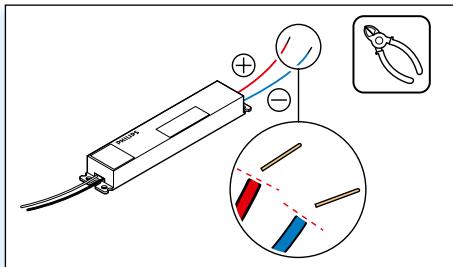
choose: mounting directly on shelves



choose: mounting on cooling pipes,
bracket 3/8 or 12 mm

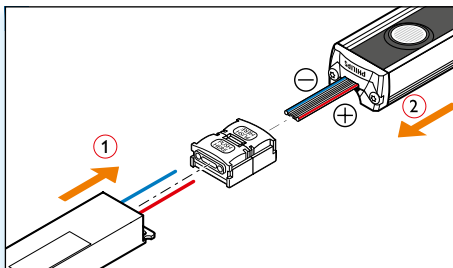


choose: mounting on shelves with bracket shelf

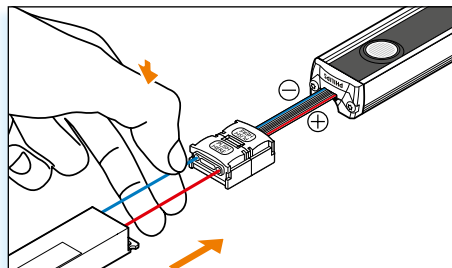


1

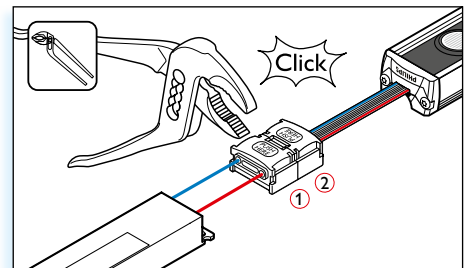
⚠ WARNING
Turn power off before installation.
All work should be done according to appropriate electrical codes.



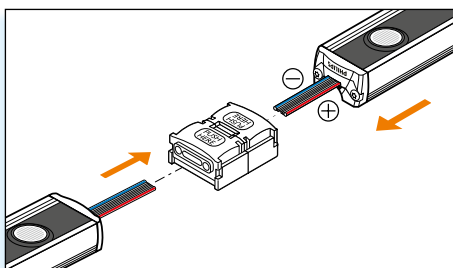
2a



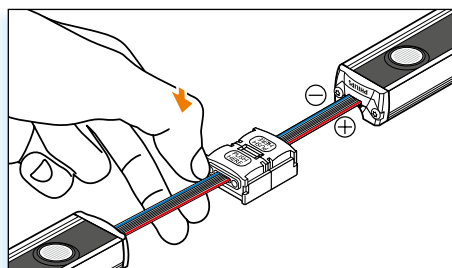
2b



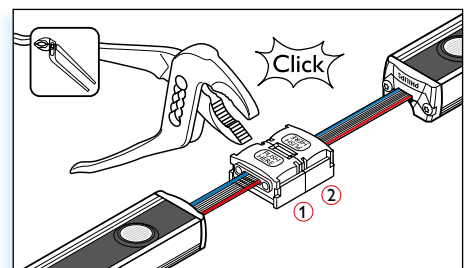
2c



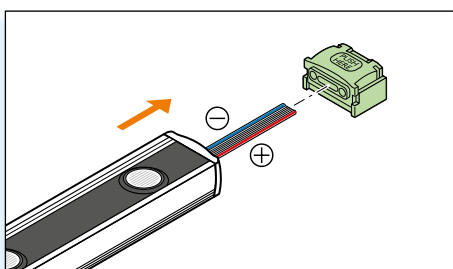
3a



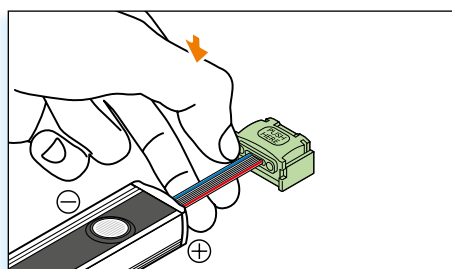
3b



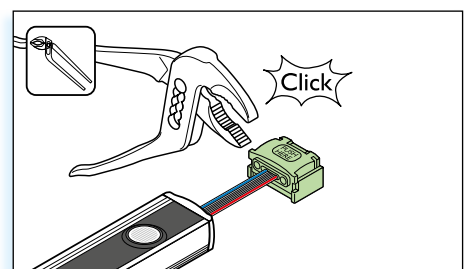
3c



4a



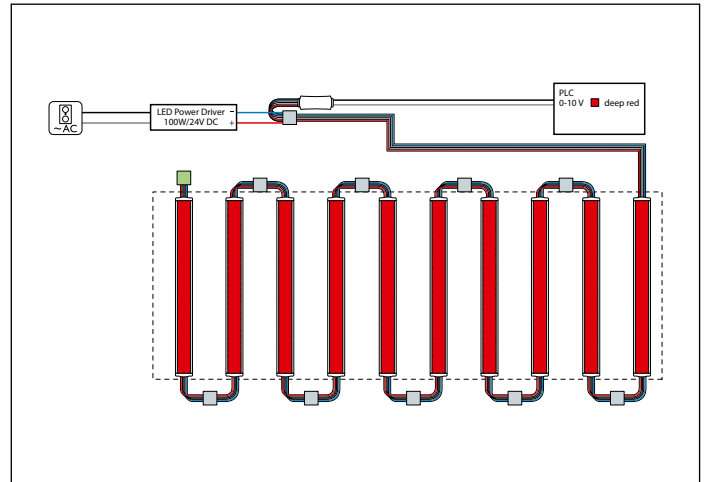
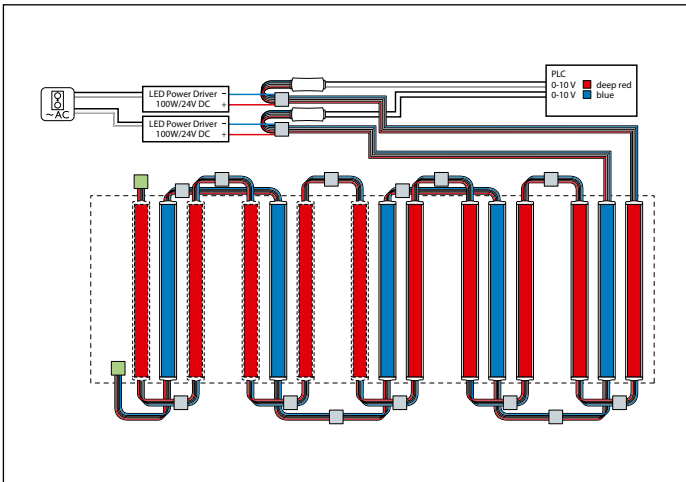
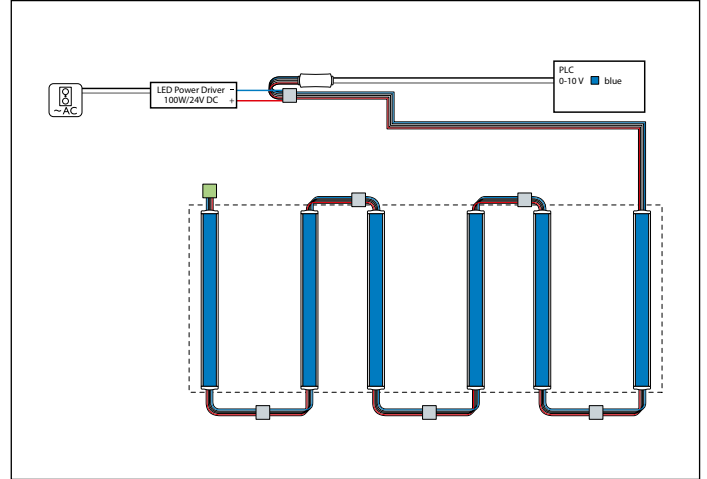
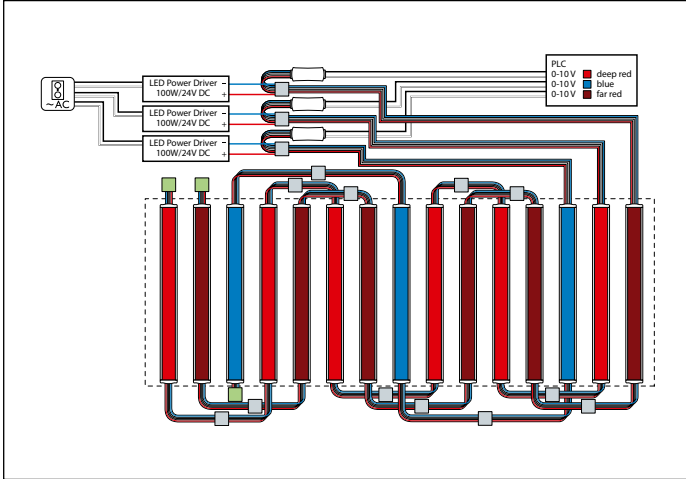
4b



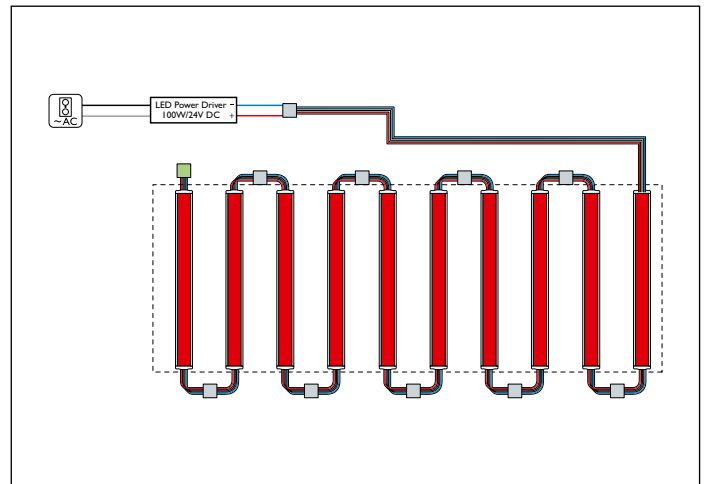
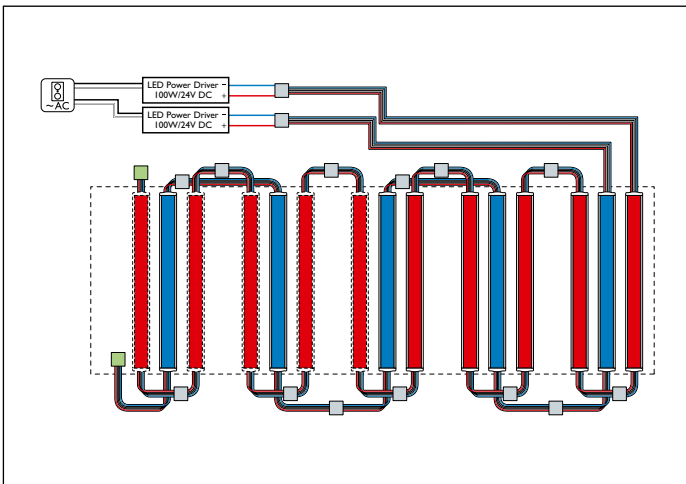
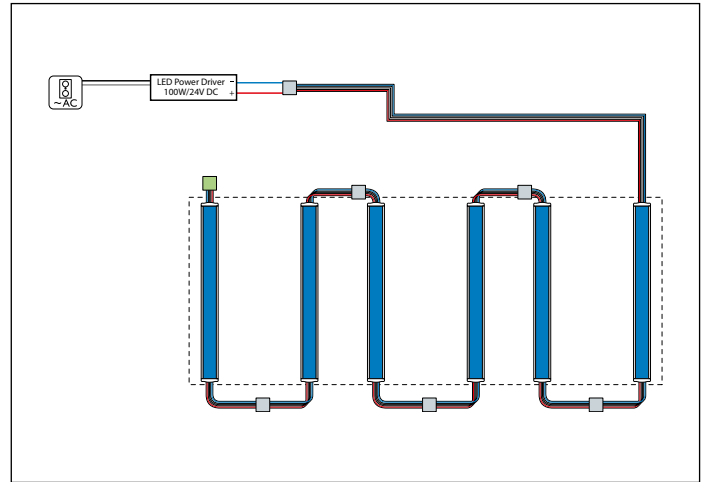
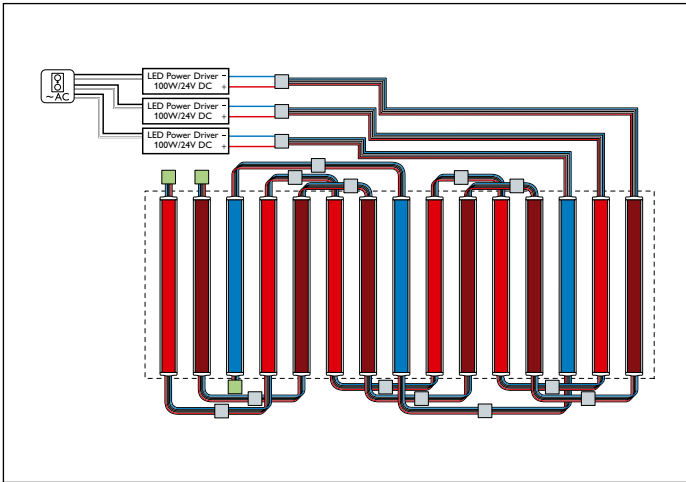
4c

Installation examples tunable system

LGM dimming unit connected



Installation examples fixed system



More information?

More information on 'how to design your multilayer application' can be found in the application guide GreenPower LED research modules. Ask your local sales office or visit our website www.philips.com/horti.

Ordering data



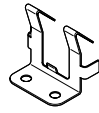
GreenPower
LED research module



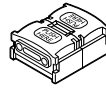
Mounting
bracket
12 mm pipe



Mounting
bracket
3/8" pipe



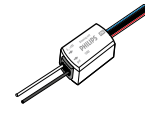
LGM mounting
bracket shelf



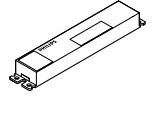
Connector
Xtend







Connector
End cap



LGM
dimming unit



LED power
driver

Product	Minimum order quantity	Packaging dimensions (cm)			Packaging weight (kg)	12NC (ordering code)
		L	W	H		
Philips GreenPower LED research module						
GreenPower LED research module deep red 	6	56	13.5	6.6	2.7	9290 006 32003
GreenPower LED research module far red 	6	56	13.5	6.6	2.7	9290 006 32103
GreenPower LED research module blue 	6	56	13.5	6.6	2.7	9290 006 32203
GreenPower LED research module white 	6	56	13.5	6.6	2.7	9290 008 43003
Accessories						
LGM mounting bracket shelf	40	21	16	8	0.2	9290 004 83903
LGM mounting bracket cooling pipe 3/8"	100	10	10	10	0.3	9290 004 64803
LGM mounting bracket cooling pipe 12 mm	100	10	10	10	0.3	9290 004 64903
Connector Xtend	10	10	7	3.3	0.05	9290 004 86203
Connector End Cap	10	10	7	3.3	0.05	9290 004 86603
LS Extension cable 4 Wg 24	50 m	46	46	3	0.750	9290 004 62603
Dimming unit						
LGM dimming unit	10	13	11	9	0.2	9290 004 79003
Controls *)						
- Basic						
DDLEDC605-GL LED Controller PWM 6 x 5A	1					9137 030 61209
DDTC 001 Dynalite Timeclock	1					9137 030 74009
DKT 622-USB-J (only required for basic)	1					9137 030 90209
- Remote control						
DDRC 420FR 4 x 20A Relay Controller	1					9137 030 51009
DNG 100BT Network Gateway	1					9137 030 82009
LED power driver						
100W-24V 100-240V	10	30	30	9	6.6	9137 006 21091
LED power driver (USA and Canada)						
100W-24V 100-240V	10	30	30	9	6.6	9137 102 99702

*) Controls (Basic and Remote control) are not available in USA and Canada

EN Please note that the driver should be built in.

CHS 请注意驱动器须内置。

CS Upozorňujeme, že Driver by měl být umístěn uvnitř boxu/nápisu.

DE Bitte beachten Sie, dass der Treiber eingebaut sein sollte.

ES Advirtase que el alimentador debe ir integrado.

FR Veuillez noter que l'unité doit être intégrée.

IT Attenzione: il driver deve essere integrato.

NL Houd er rekening mee dat de driver moet worden ingebouwd.

PO Uwaga! Zasilacz powinien być zainstalowany wewnątrz.

RU Обращаем Ваше внимание на то что блок питания должен быть размещен внутри светового короба.

SV Observera att drivenheten måste vara inbyggd.

TR Dikkat, Sürücü içeriye monte edilmelidir.

Notes:

- The GreenPower LED research module is only suitable for connection to a Class 2 power source (Philips LED power driver) with energy limited supply.



WARNING

Turn power off before installation.
All work should be done according to appropriate electrical codes.



© 2014 Royal Philips N.V.

All rights reserved. Reproduction in whole or in part is prohibited without the prior written consent of the copyright owner. The information presented in this document does not form part of any quotation or contract, is believed to be accurate and reliable and may be changed without notice. No liability will be accepted by the publisher for any consequence of its use. Publication thereof does not convey nor imply any license under patent- or other industrial or intellectual property rights.

06/2014

Document order number: 3222 635 68070

Data subject to change.

www.philips.com/horti